

23.06. Backup

If your data is important, then data backups need to happen, because things can go wrong (power failures, disk failures, ransomware, etc.)

- You can perform a backup manually and/or automatically. Automatic backups should be scheduled to run frequently (every day), manual backups should be done before updates or other potentially risky changes.
- It is not necessary to quit the database before performing a backup.

While a backup is running, all user activity will **be paused** until the backup is complete. They won't even be able to log out of mSupply. So:



- Make sure you only run a manual backup when users are not using mSupply.
- Make sure you configure your automatic backups to run at a time when the system is not busy e.g. lunch time, the end of work or, if your system will stay up 24/7, the middle of the night.

- The Backup function works in both single user and client / server (multi-user) environments. The main differences are that in client / server (multi-user) environments:
 - The configuration of the Primary backup is done on the Server computer.
 - The backup can be configured to include other files, such as the Index and log files, which is very handy when providing support.
 - The backup takes place **on the server**. A progress window will appear on the client to show how the backup is proceeding.
 - Restoration from a backup must be run from the server computer.

Running a backup manually

Choose **File > Backup...** to run a manual backup of your data. The backup will be carried out according to the configuration of the [Preferences > Backup tab](#).

Backup: best practice

We recommend you set up your mSupply backups in the following manner

Disk configuration

If your machine has the capability (e.g. it is a server with multiple storage volumes), then there is additional data security in configuring a [RAID array](#).

Use RAID 1

- [RAID 1](#) is two disks mirrored, so data is written to each disk
 - Advantages
 - if one disk fails you continue work from the other disk
 - if the RAID controller fails, you can directly connect one disk and continue work.

There are other forms of RAID, but their advantages are outweighed by their disadvantages, considering that even a large mSupply database will be of the order of 10 GB in size.

Use a hot spare

This is a spare disk that the RAID controller will use if a disk in the RAID set fails.

Add another single disk to receive backup data

This disk is not part of the RAID

This is still possible if your machine only has one disk drive and you can not configure a RAID array. This could be a volume attached to a USB port (e.g. a thumb drive) or a location on the network, *provided that it is always available*.

Configure a secondary backup location in mSupply

- Configured a secondary backup to a destination on the same machine, or elsewhere on the network that will be synced off-site (e.g. Dropbox, OneDrive, Google Drive, etc.) - refer [Preferences > Backup 2 tab](#).

Configure off-site backup

Use Spideroak™ or Dropbox™ to backup your secondary location to their internet servers.

If needed configure an off-site computer to also synchronise with the backup service provider so you have an off-site copy as well as the “cloud” copy.

Mirrored servers

We have the technology to provide mirrored servers when very high availability is required. Contact us if interested. A charge will apply for implementation

Restoring your data

An mSupply database can be created from a backup:

1. Log in to mSupply with an old data file or by creating a new data file and click menu **File > Restore...**
2. Locate your backup file in the **Open** dialog that appears. Your backup file has file extension .4BK, eg. CMS.4BK. Hit **OK**.
3. Clicking on the small red down arrow next to the data file name will show the current destination location to where the data file will be restored. You are being prompted for a folder where the data file will be restored to. Change the destination location of the data file by clicking on the ... button. Once you are happy with the destination location, hit the **Restore** button.
4. After the file is restored, the file location is then displayed using your computer's default file manager. You can close this window.
5. Now go back into mSupply and click menu **File > Open data file...**
6. Locate the newly restored data file in the **Open** dialog that appears. Your data file has file extension .4dd, eg. CMS.4dd.
7. Select the data file and hit the **OK** button.
8. You may be prompted for a log file. Click on the **Create** button. Select the suggested location, which is the same as your new data file location, and click on the **Save** button.
9. You will be prompted to do a backup. It is not necessary to do this at this stage, but the log file will not be created until you create the first backup, so you may as well accept the offer. It can take a while to open this new data file, particularly if it is a large data file and the index file is not included with the backup (hours).
10. mSupply should open your restored data file and you should be presented with the log in screen to the new data file.

In client/server usage this command will have no effect.

Be very careful about restoring. We suggest you consult Sustainable Solutions before attempting a restore, particularly in a synced system.

Setting up backup and a log file for single user mSupply

If you are using a synchronisation system with mSupply it's very important that you don't lose any data on the remote site. To ensure that power failures (or a dead battery on a laptop) don't cause mSupply to quit unexpectedly and therefore to lose data, you should configure mSupply to use a log file.

Use a standard place to store backups

We suggest that you store:

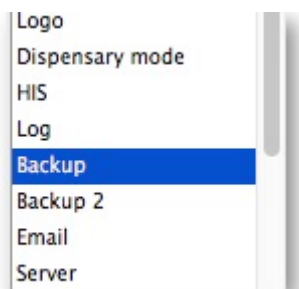
- mSupply data in C:/mSupply_data/
- Backups in C:/mSupply_backups/
- Log file in C:/mSupply_data/

Primary backups

We recommend that you configure mSupply to

- Use the single disk as the primary backup location.
- The Primary backup should be set to be carried out nightly.
- Use a log (journal) file. A log file records each database action as it happens. In the event of a power failure or other adverse event, all changes can be recovered from the log file.

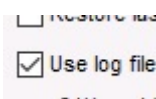
You can configure primary backups to run on a schedule that you set. To do this go to Admin > Preferences and select Backup from the left panel. You must have an existing backup to use these features (see [running_a_backup](#)).



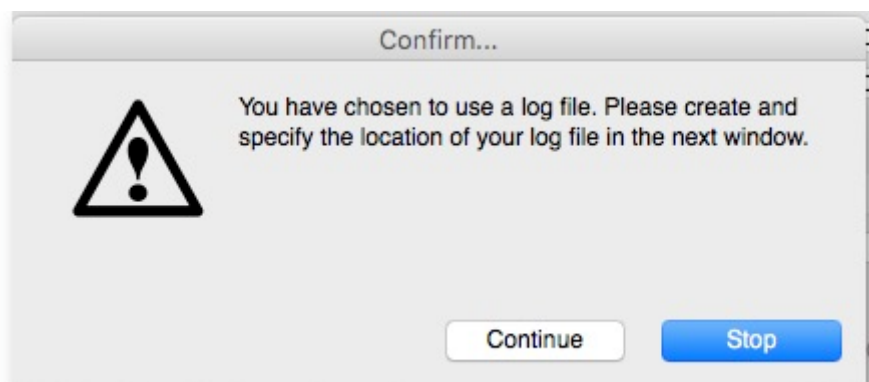
Select Automatic Backup and schedule by hour(s), day(s) or week(s) as indicated.

A screenshot of the 'Automatic Backup' configuration form. The 'Automatic Backup' checkbox is checked. Under 'Every', the '1 day(s)' option is selected with a time of '12:30:00'. The 'Weekly backup' section is collapsed. Below it, the 'Every 0 week(s)' section is visible, showing checkboxes for days of the week (Monday through Sunday) and time slots (all set to 00:00:00).

Choose your backup folder and select Use log file.



You will be prompted to specify the location of your log file.



Press Continue

The screenshot shows the 'Preferences...' dialog box with the 'Backup' tab selected in the left-hand menu. The main area contains settings for automatic and weekly backups. The 'Automatic Backup' section is checked, with 'Every 1 day(s) At 12:30:00' selected. The 'Weekly backup' section is unchecked. The 'Backup folder and restore properties' section shows the folder path 'C:\Users\Administrator\Documents\mSupply_backups\' and a compression rate of 'Fast'. The 'Keep the last 0 backups' option is selected. The 'Verify data file after backup' and 'Restore last backup if database is damaged' options are unchecked. The 'Email Result of Check - Always' option is unchecked. The 'Use log file' option is checked, with the log file path 'C:\Users\Administrator\Documents\mSupply_backups\mSupply_journal' displayed. The 'Integrate last log if database is incomplete' option is checked. The 'Cancel' and 'OK' buttons are at the bottom right.

These options only apply in single user mode. In client-server mode set backup schedule on the server.

☒ Automatic Backup

☐ Every hour(s)

☒ Every day(s) At

Weekly backup

☐ Every week(s)

☐ Monday ☐ Friday

☐ Tuesday ☐ Saturday

☐ Wednesday ☐ Sunday

☐ Thursday

Backup folder and restore properties

Choose...

Compression rate Keep the last backups

☐ Verify data file after backup ☐ Email Result of Check - Always

☐ Restore last backup if database is damaged ☒ Integrate last log if database is incomplete

☒ Use log file

C:\Users\Administrator\Documents\mSupply_backups\mSupply_journal

Cancel OK

When all settings are correct, press OK to save.

Previous: [25.05. Web browser access via TSPlus](#) | Next: [25.07. Updating mSupply](#)

From:

<https://docs.msupply.org.nz/> - mSupply documentation wiki

Permanent link:

https://docs.msupply.org.nz/admin:backup_and_restore?rev=1600154278

Last update: **2020/09/15 07:17**

