

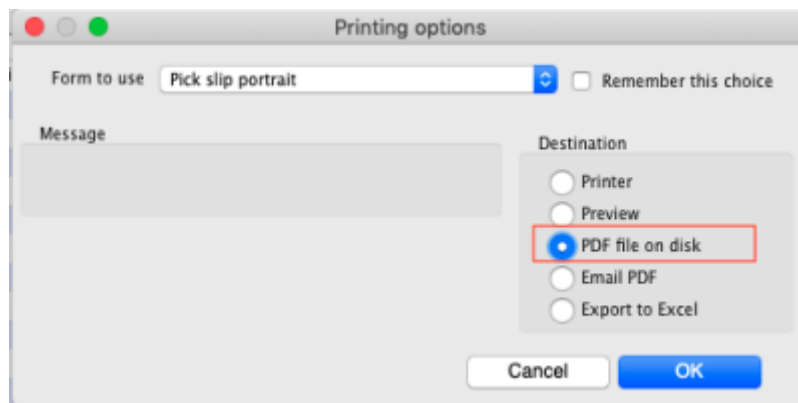
28.12. How to access Temp folder

Introduction

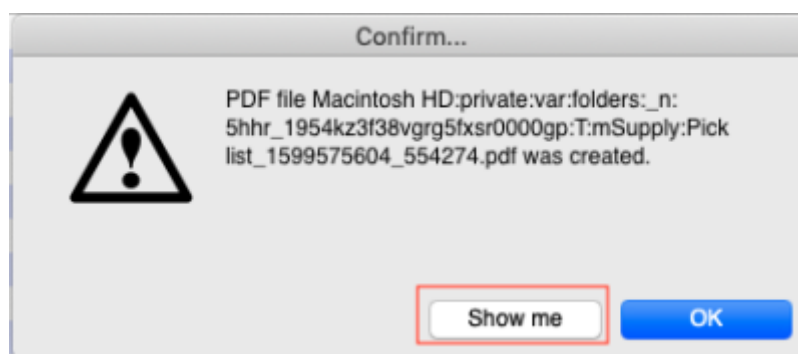
mSupply uses the operating system to store generated reports and printouts like excel and PDF documents. There may be instances where viewing the temp folder is required. There are various way to navigate to the temp folder.

Using mSupply

View any customer or supplier invoice. Pretend you want to print the invoice. As shown below choose to view the **PDF file on disk**.

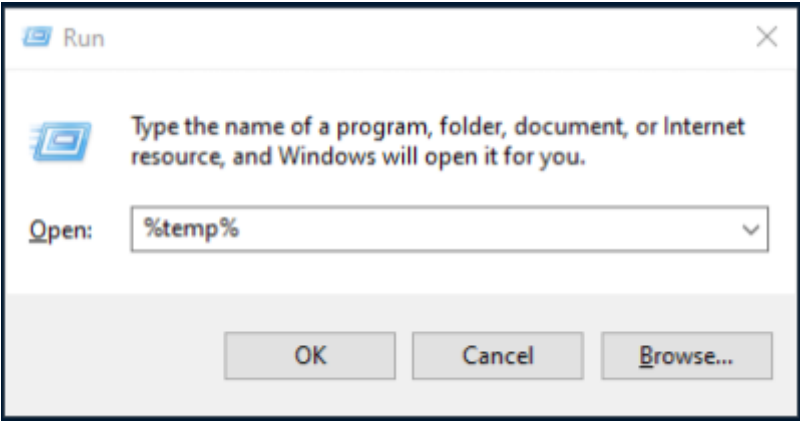


Once the report or print out is generated you will be shown the option to view the file. Choose **Show me** as shown below. You will be shown the file inside the temp folder location.



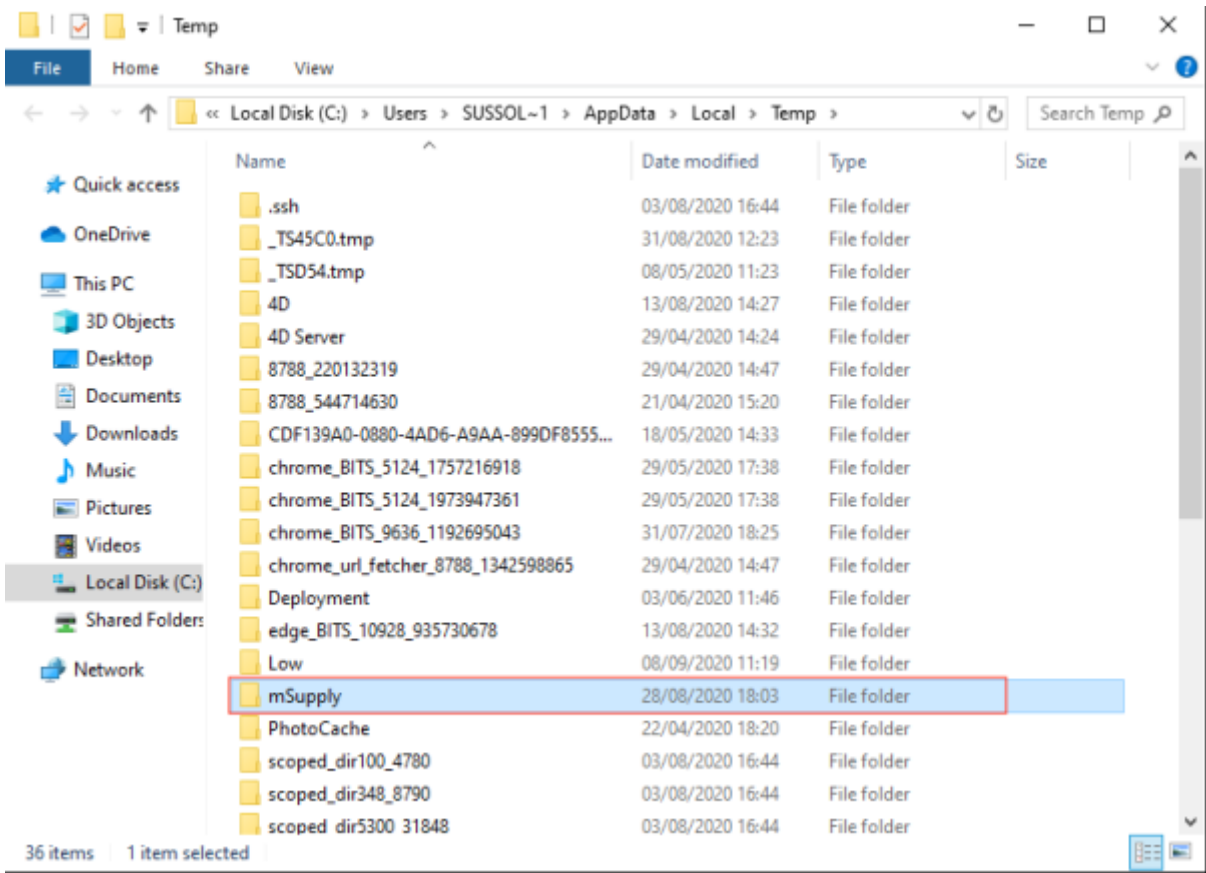
The Smart Geek Way

If you are using Windows, then you can show off to your friends using this technique. On your computer keyboard, hold down the "Window Key" and click the "R" key. A window such as below will be displayed. This is known as the Run window.



We want to open the **Temp** folder, so type %temp% as shown and click OK to run.

The Temp folder will be displayed in an File Explorer window as shown below.



The folder **mSupply** should contain all the files that mSupply has generated.

Previous: [28.11. Benefits of a multi-store system](#) | | Return to: [28.13. Fixing incorrectly received stock](#)

From:

<https://docs.msupply.org.nz/> - **mSupply documentation wiki**

Permanent link:

https://docs.msupply.org.nz/faq:how_to_access_temp_folder

Last update: **2021/10/08 11:47**

