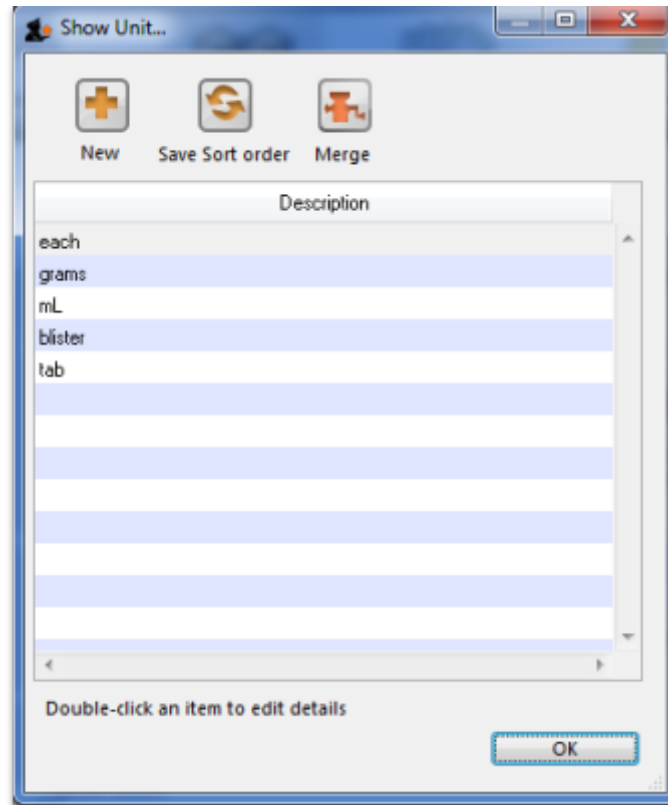


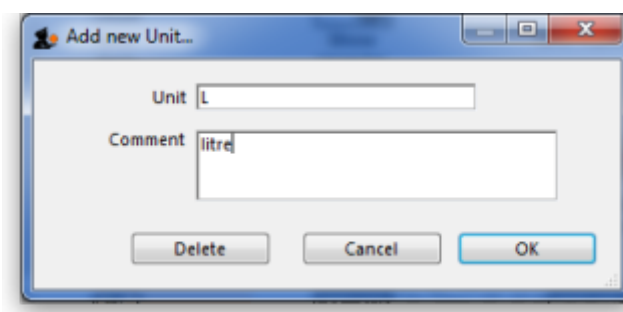
# Units

\*

Choose **Show units** from the **Items** menu. When you have defined your units, a list is displayed:



Click the **New** button to add a new unit.



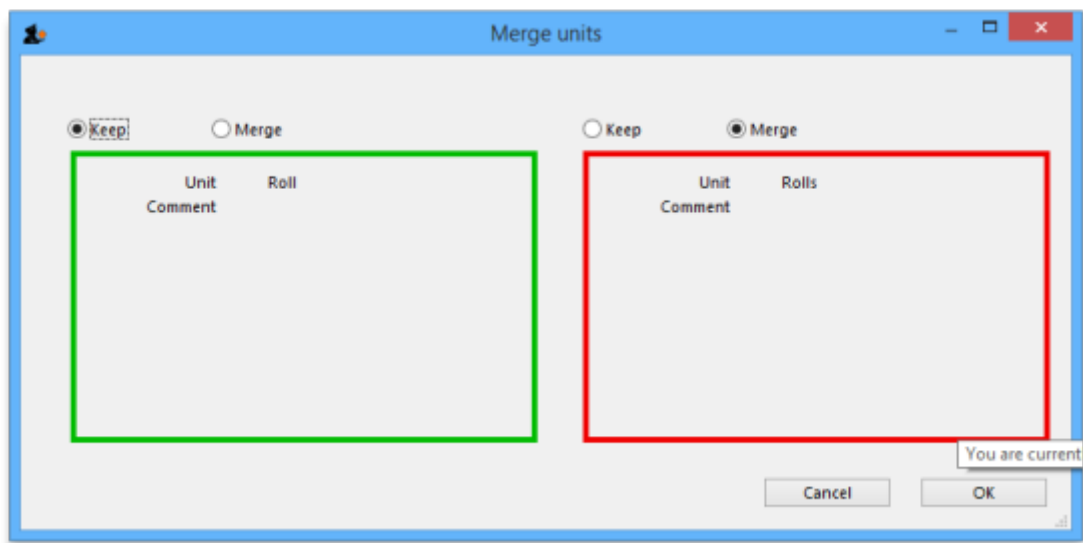
Note that you will need to have sufficient user permissions to use this function.



Do not change the record for one unit into a different unit, as all items using that unit will be updated.

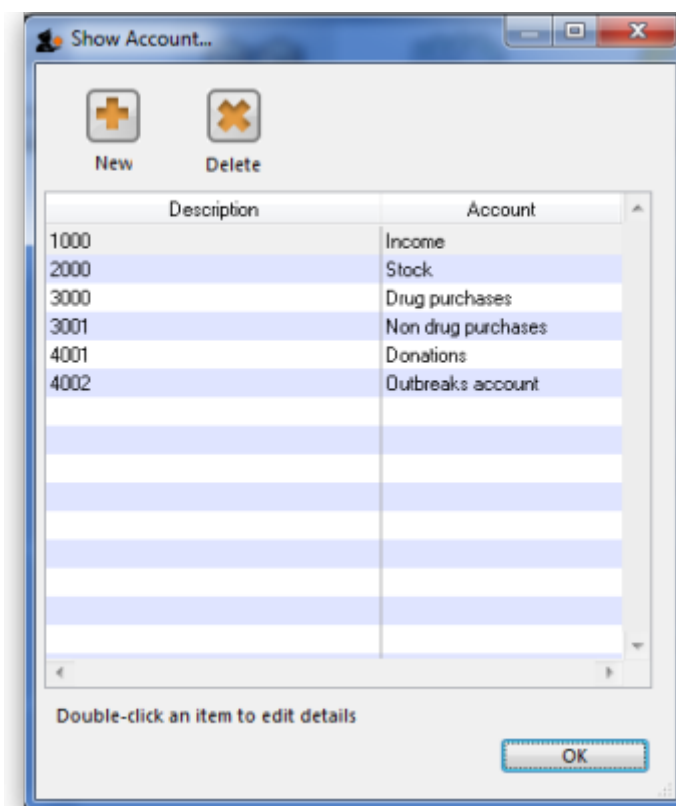
Click the **Merge** button to merge two units. Note that duplicated units can occur on import of units or a user may duplicate a unit being unaware of one existing already. The below window appears to

merge the units. The green boxed unit is the one that will be kept, the red boxed unit will be deleted.



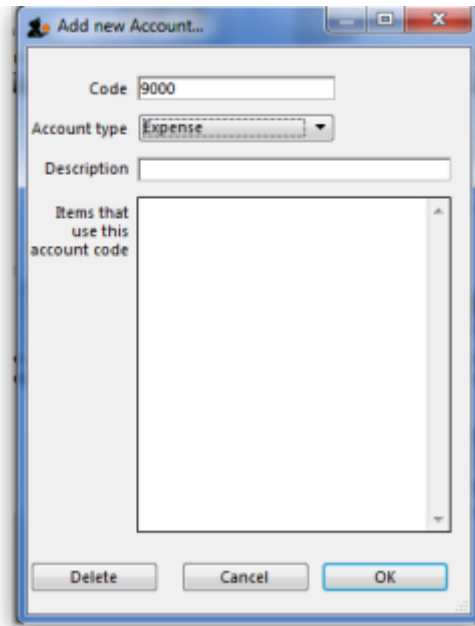
## Accounts...

Choose **Show accounts** from the **Items** menu. This window allows you to manage the range of accounts that can be assigned to items.



Account codes are used when exporting transaction data from mSupply® to external accounting software. Double-click a line to edit its details. Changing an account code or description will affect all items that are assigned to that account.

Click the **New** button to add a new account.



Fill in the code, description field and select the account type. The field **Items that use this account code** will display such items for each account code. Account types are **Expense**, **Income** and **Asset**. Click on **OK** button to add a new account, and **Delete** button to delete an account.

Previous: [Inventory adjustments](#) Next: [Names: Using, adding and editing](#)

From:

<https://docs.msupply.org.nz/> - mSupply documentation wiki

Permanent link:

[https://docs.msupply.org.nz/items:item\\_units\\_and\\_item\\_accounts?rev=1458774925](https://docs.msupply.org.nz/items:item_units_and_item_accounts?rev=1458774925)

Last update: **2016/03/23 23:15**

