

2.03. Starting mSupply for the first time

To start mSupply, either

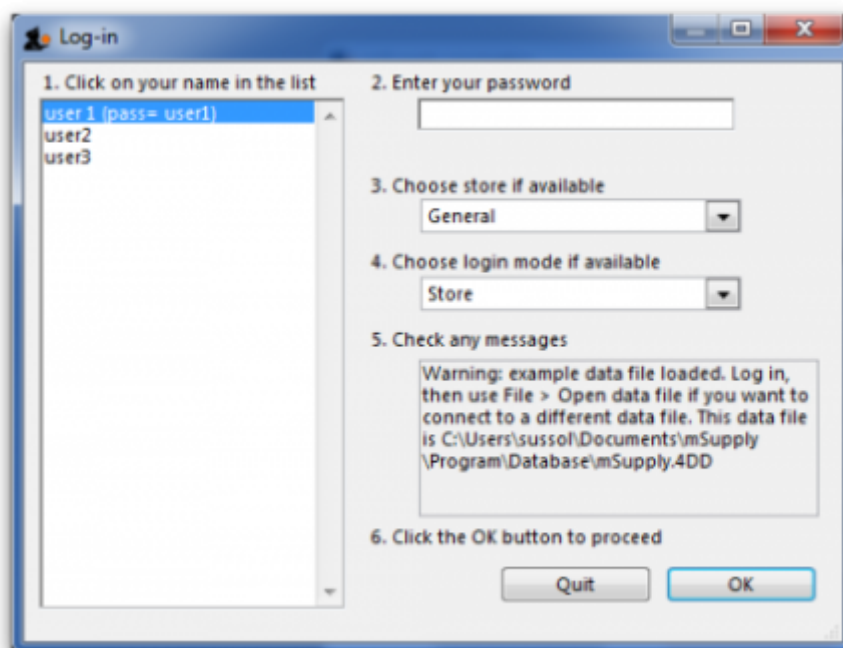
- double-click the *start mSupply icon* on your desktop, or
- choose the *start mSupply* item from the mSupply menu in the programs section of the Start menu (on Windows). If this is the first time mSupply has been started after installation, then an example data file will be opened allowing you to follow the mSupply tutorial. mSupply will present you with a log in window.

Note that mSupply will “remember” the last data file used, and automatically present the log-in window for that file unless you move or rename your data file. If you do this, mSupply will show you a standard open/save window for you to choose the new name/location of your data.

Creating a new data file

If you already have mSupply open:

1. **File > New Data File...**
 2. Navigate to a convenient location.
 3. Assign a name to your data file
 4. Click the save button.
- mSupply will now start creating a new data file.
 - On completion, you will be presented with a login window. See below for instructions



Alternative method for creating a new date file

Here is an another way to create a new data file.

- Quit mSupply if it is running.
- Start mSupply and then immediately hold down the “alt” key (You will now be shown the following which has a number of radio buttons with the different options available.

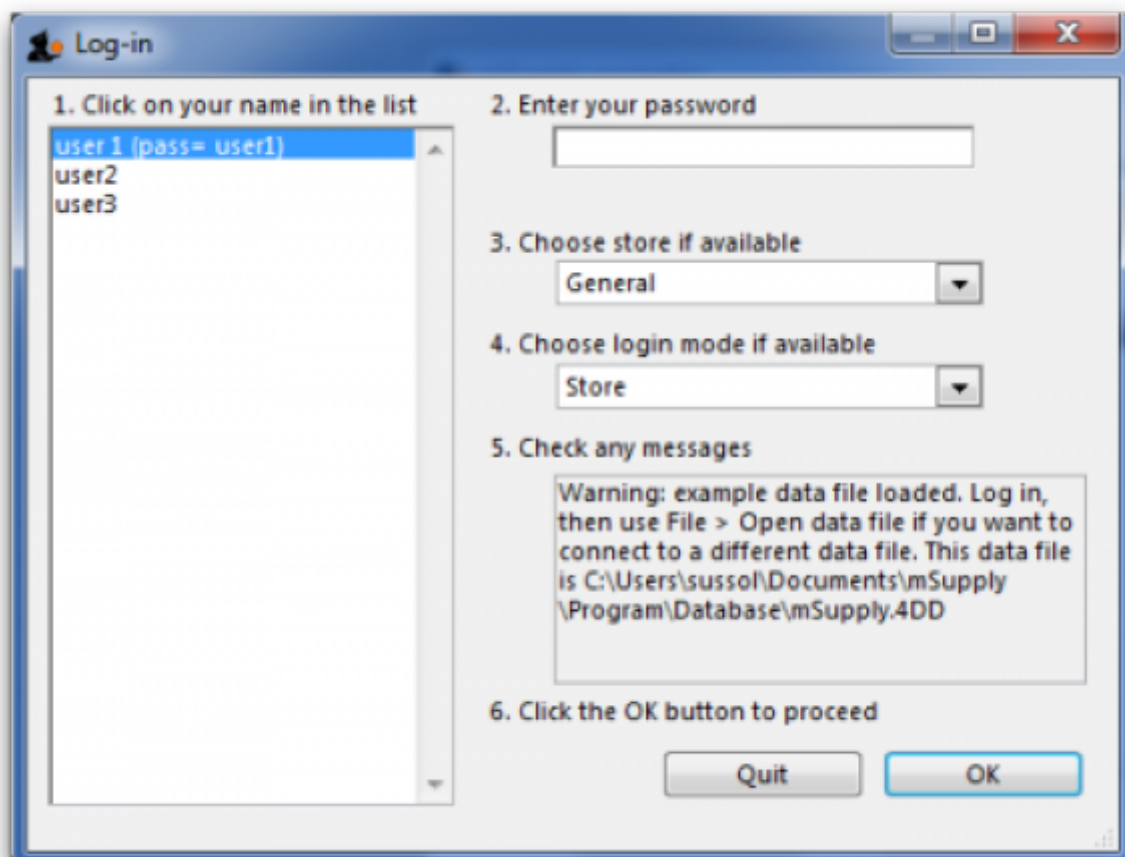


- Choose the 3rd radio button *Create a new data file* . Another window will open where you can choose the location and name of your new data.

Once mSupply has opened up a particular data file, that file becomes the default file which is opened automatically on restarting mSupply. To use a different file, it must be chosen, as described later. If the default data file is renamed or moved to a different location, it must be opened using its new name or location.

Log-in to mSupply

The first time you use mSupply, you will be presented with the log-in window like this:





mSupply® ships with three users. “user 1” and “user 2” are the designer and administrator - these two users cannot be deleted, but they can be edited, allowing the use of appropriate names and making changes to their passwords and permissions.

1. You should select *user 1*(*pass=user1*) from the list
2. Enter the password “user1” (without the quotes). When different users with their own level of access have been set up, you will then log-in by selecting your user name and typing your own password.
3. From the drop down list, select the store with which you are working. Most mSupply users will be operating with a single store, but for users operating with more than one store, the login screen allows you to select any of the stores to which you have access. After selecting the desired store, all transactions will relate to that store until you return to the login screen and select a different store from the drop down menu.
 - Supervisors and other Level 1 users will have an additional menu item, *Supervisor - All stores* . In this mode, all stores are accessible, and you would use this mode, for instance, when placing an order for supplies which will be distributed to a number of stores. Further information is available here: [Show stores](#)
4. Choose login mode, you have the option to select *Store mode* or *Dispensary mode* ; the default can be set in your *Preferences*

Finally, click *OK* to login

Preparing mSupply for actual use

The following 2 steps are necessary to start mSupply for the first time.

- Create a new data file
- Prepare the new data file for use

Create a new data file

In order to create a new data file, see above [creating a new data file](#)

Save the data file in a location that you can easily find for doing backups. We suggest you create a folder called “mSupply data” inside the *My Documents* on Windows PC or the *documents* folder on a MAC to store your data file.

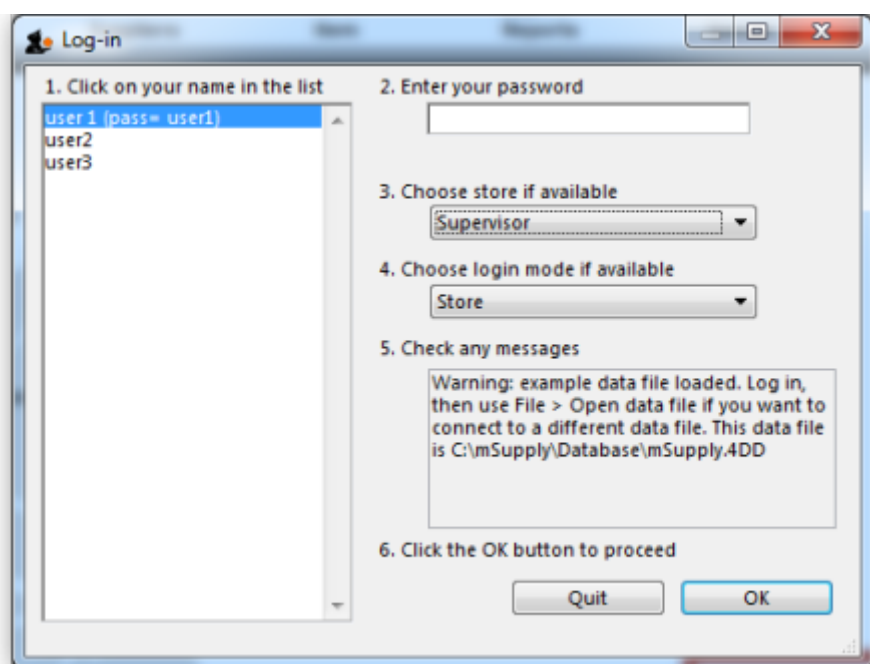
Prepare the new data file for use

1. Choose your home currency. Currencies are used when you are calculating cost prices for orders, and when you are comparing quotations from suppliers. Choose *Special > Currencies*. If your currency is not already shown, click the *New* button at the top of the window and choose from the pick-list the three letter code abbreviation of the currency you will use to operate your

- database (e.g. "INR" for Indian Rupees, or "SAR" for South African Rands, or "USD" for US dollars). Set the "Rate" to "1".
2. Enter your Preferences. Choose *File>Preferences* to do this. Read section [16. Preferences](#) of this User Guide to learn what the different Preference settings do.
 3. Enter your Suppliers and Customers.
 4. If you have a computer file holding your customer and/or supplier details, it can be imported directly into mSupply. See [17.03. Importing names](#).
 5. You can also do this as you go along simply by entering a customer or supplier the first time you create an invoice or order from them.
 6. Enter the items you keep in stock. There are a number of ways you can do this:
 - If you have a computer file holding details of the items you stock, it can be imported directly into mSupply. See: [17.01. Importing items](#).
 - A file containing the WHO essential drug list is available from the download page of the mSupply web site. You are encouraged to use this file should you have no computer file of your own.
 - You can enter each item using the *New item* Command from the item menu.
 - Enter your stock figures.
 - If you have a computer file holding both details of the items you stock and your current stock figures, it can be imported directly into mSupply. See: [17.02. Importing stock](#).
 - Your opening stock may be entered manually; choose *Item>Inventory adjust - add stock* , and enter the required details.
 - If you intend to record the location of each item, you should define the locations that your store contains. See: [4.06. Stock locations and location types](#).

About Stores

At the log in window you have the option to log into a specific store or to log in as 'Supervisor' by choosing option 3 shown in the below window.



Unless you intend to use multiple virtual stores in mSupply you can ignore this option. More information will be found here: [Virtual stores](#)

About Dispensary Mode

mSupply allows you to log in in two different modes, *Store mode* or *Dispensary mode* . Each user can have his/her permissions set to allow or disallow each mode.

Each mode presents the user with a different menu bar and different windows, depending on whether you are issuing stock to an organisation or an individual

See section [10.01. Dispensary mode](#)

Previous: [2.02. Installation](#) | | Next: [3. Tutorial](#)

From:
<https://docs.msupply.org.nz/> - mSupply documentation wiki

Permanent link:
https://docs.msupply.org.nz/setting_up_msupply:starting_for_first_time?rev=1600315175

Last update: **2020/09/17 03:59**

