

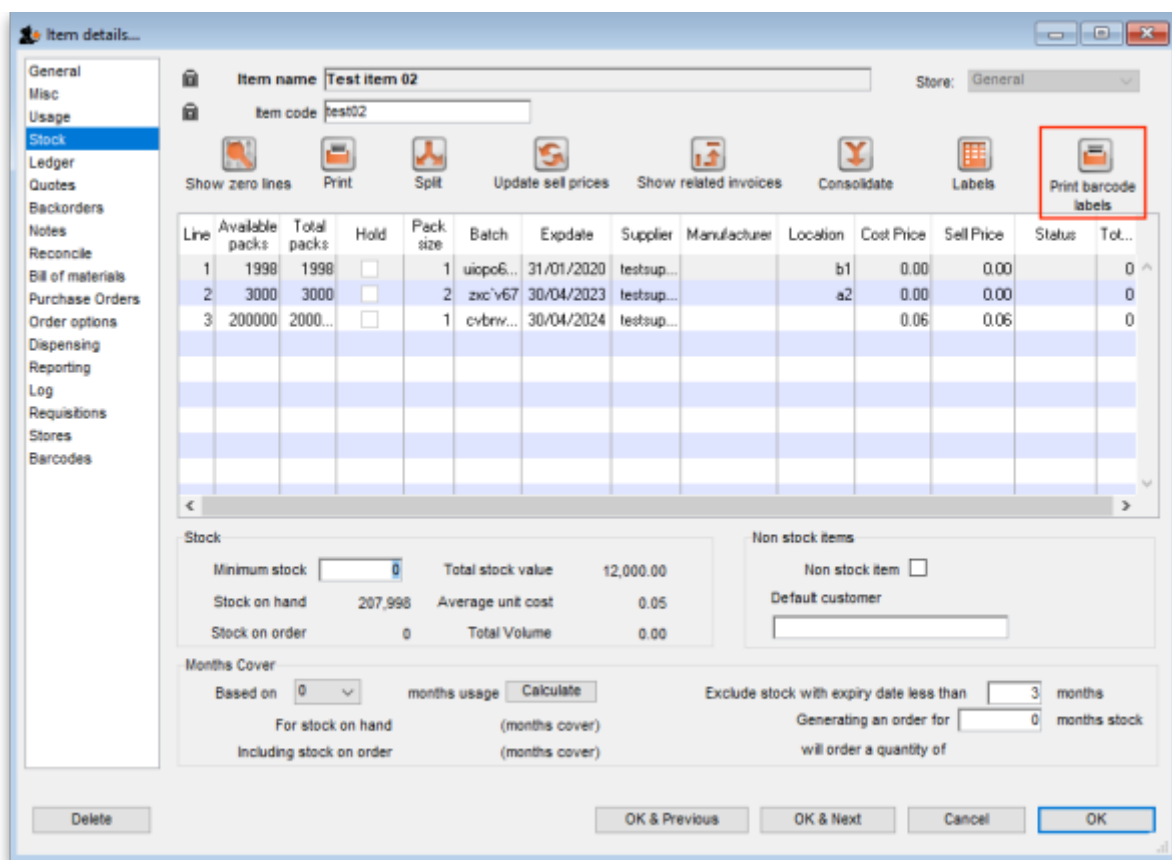
Barcode label printing

Added: Version 4.01

You might want to print barcode labels for your stock if an existing label is damaged, if you break a box down into smaller pack sizes and the contents don't have individual GS1 barcodes or if some stock comes into your warehouses and it doesn't have valid GS1 barcodes on it.

There are several places in mSupply where you can print barcode labels for your stock.

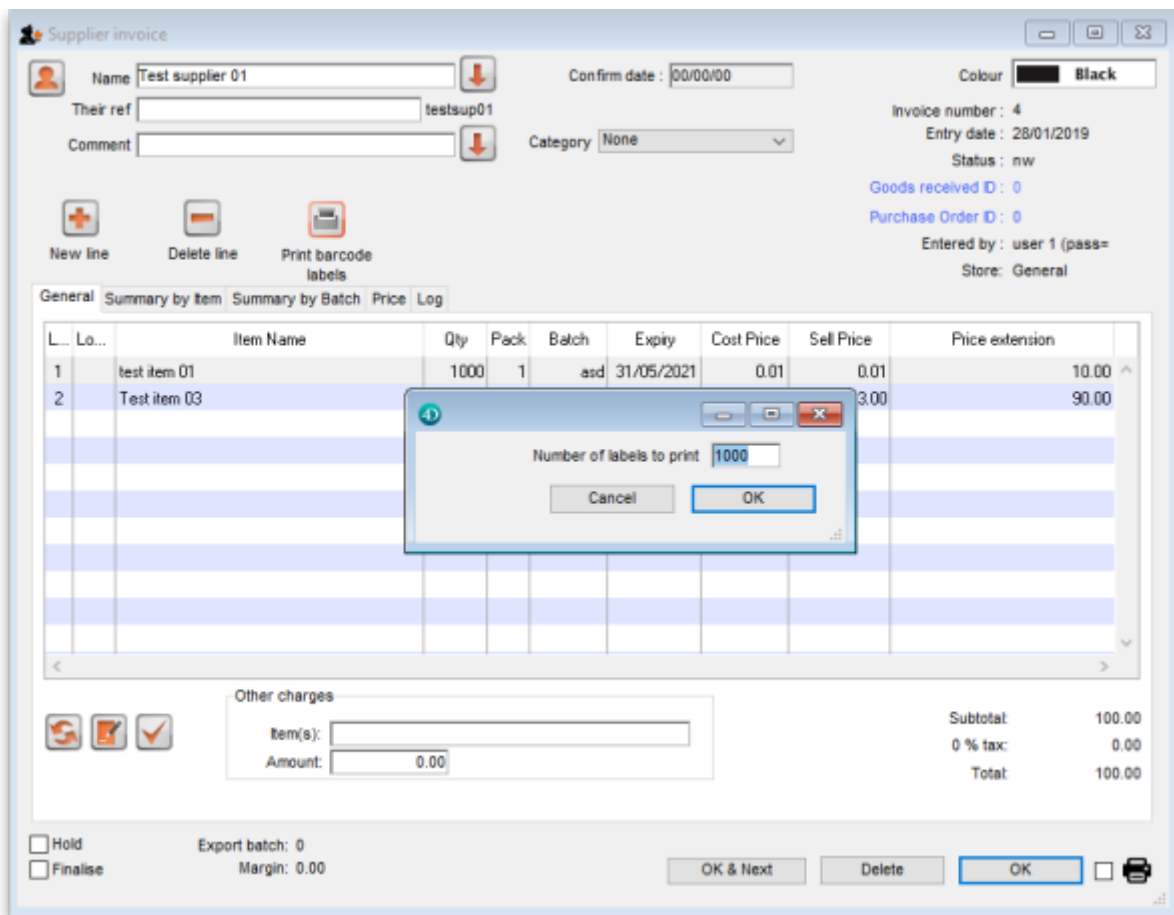
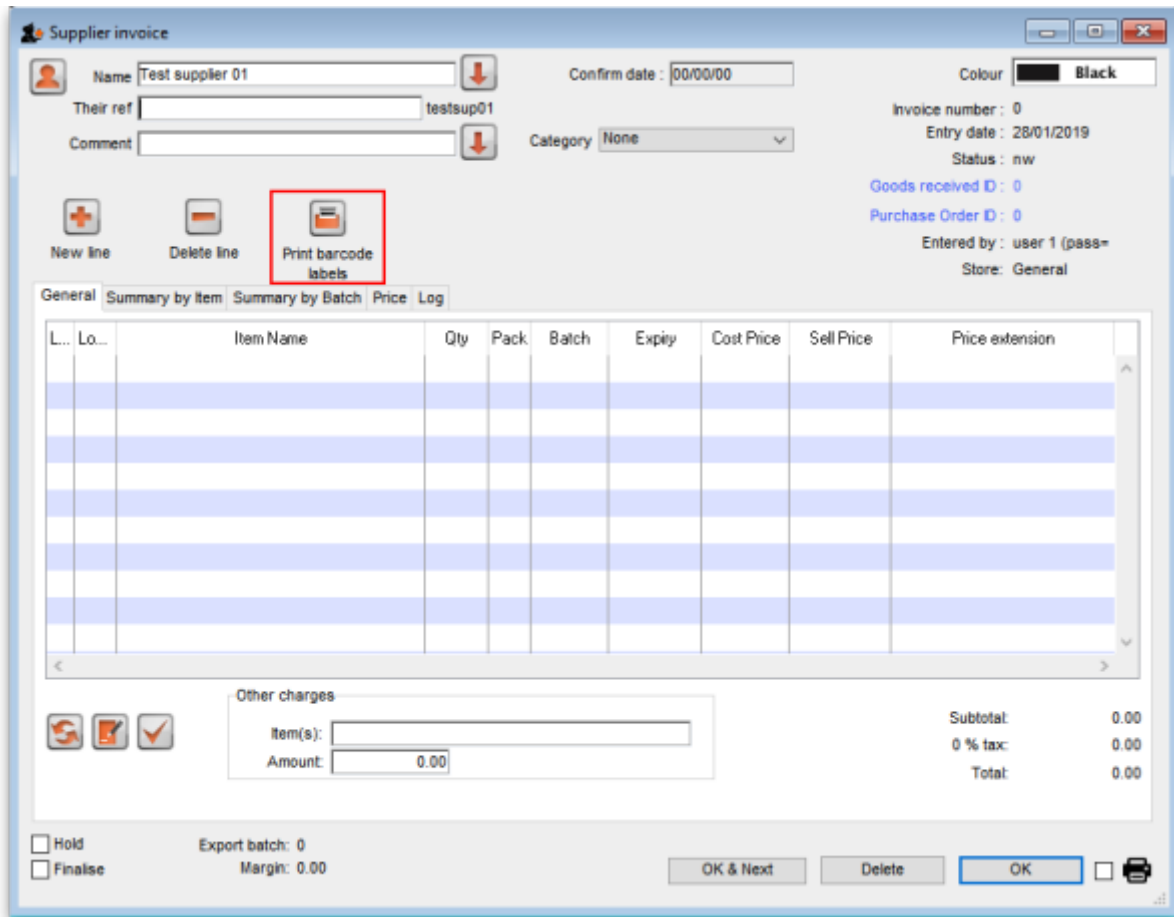
Item details page

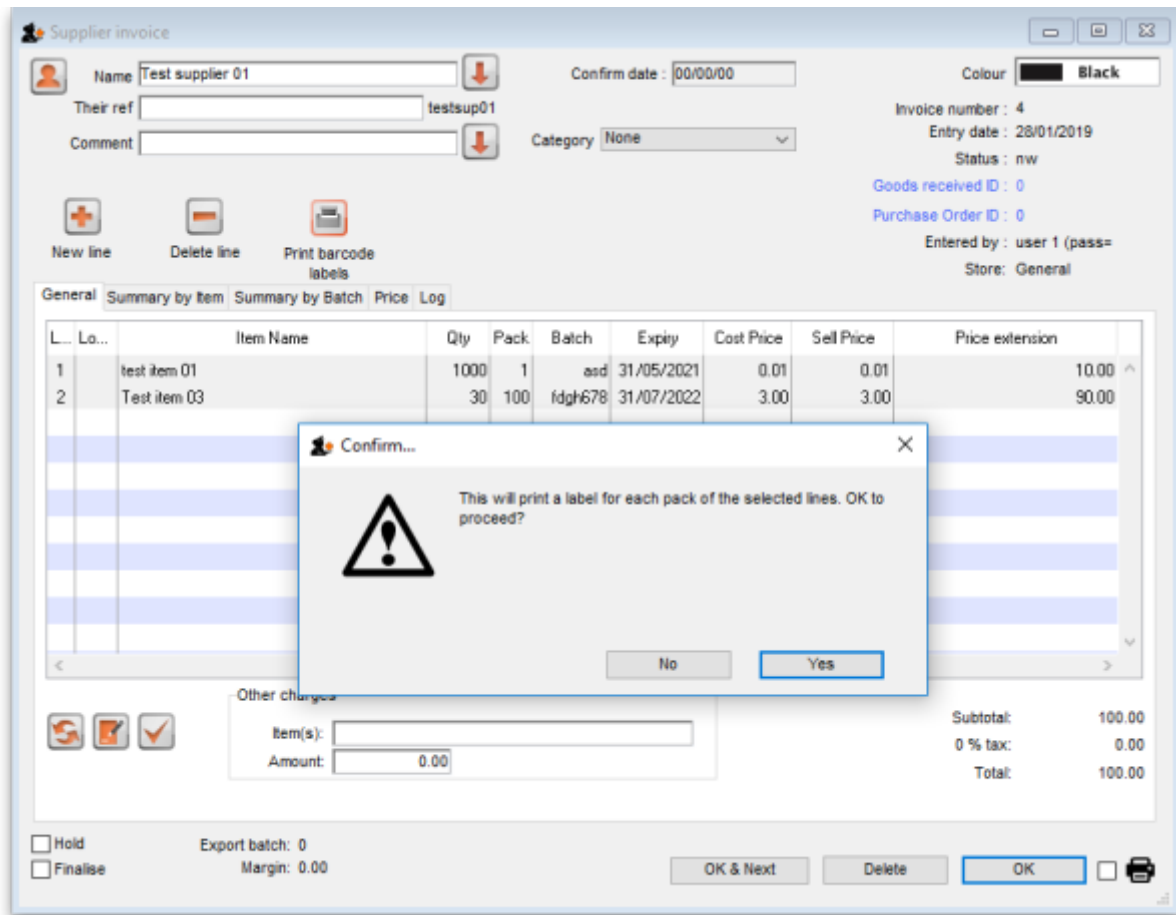


The screenshot shows the 'Item details...' window in a software application. The window title is 'Item details...'. On the left is a navigation menu with options: General, Misc, Usage, Stock (highlighted), Ledger, Quotes, Backorders, Notes, Reconcile, Bill of materials, Purchase Orders, Order options, Dispensing, Reporting, Log, Requisitions, Stores, and Barcodes. The main area displays item information: Item name 'Test item 02', Item code 'test02', and Store 'General'. Below this are icons for 'Show zero lines', 'Print', 'Split', 'Update sell prices', 'Show related invoices', 'Consolidate', 'Labels', and 'Print barcode labels'. A table lists stock items with columns: Line, Available packs, Total packs, Hold, Pack size, Batch, Expdate, Supplier, Manufacturer, Location, Cost Price, Sell Price, Status, and Tot... The table contains three rows of data. A dialog box titled 'Number of labels to print' is overlaid on the table, with a text input field containing '1998' and 'OK' and 'Cancel' buttons. Below the table are sections for 'Stock' (Minimum stock: 0, Stock on hand: 207,998, Stock on order: 0, Total stock value: 12,000.00, Average unit cost: 0.05, Total Volume: 0.00) and 'Non stock items' (Non stock item checkbox, Default customer field). A 'Months Cover' section includes a 'Based on' dropdown set to '0', a 'months usage' field, a 'Calculate' button, and options to 'Exclude stock with expiry date less than 3 months' and 'Generating an order for 0 months stock will order a quantity of'. At the bottom are buttons for 'Delete', 'OK & Previous', 'OK & Next', 'Cancel', and 'OK'.

Line	Available packs	Total packs	Hold	Pack size	Batch	Expdate	Supplier	Manufacturer	Location	Cost Price	Sell Price	Status	Tot...
1	1998	1998	<input type="checkbox"/>	1	uiopc6...	31/01/2020	testsup...		b1	0.00	0.00		0
2	3000	3000	<input type="checkbox"/>	2	zxcv67	30/04/2023	testsup...		a2	0.00	0.00		0
3	200000	2000...	<input type="checkbox"/>	1	cvbrv...	30/04/2024	testsup...			0.06	0.06		0

Supplier invoice





Stock list

Previous: [Pick list checking](#) Next: [Why an HIS module for mSupply?](#)

From: <https://docs.msupply.org.nz/> - **mSupply documentation wiki**

Permanent link: https://docs.msupply.org.nz/barcode_scanning:barcode_label_printing?rev=1548696137

Last update: **2019/01/28 17:22**

