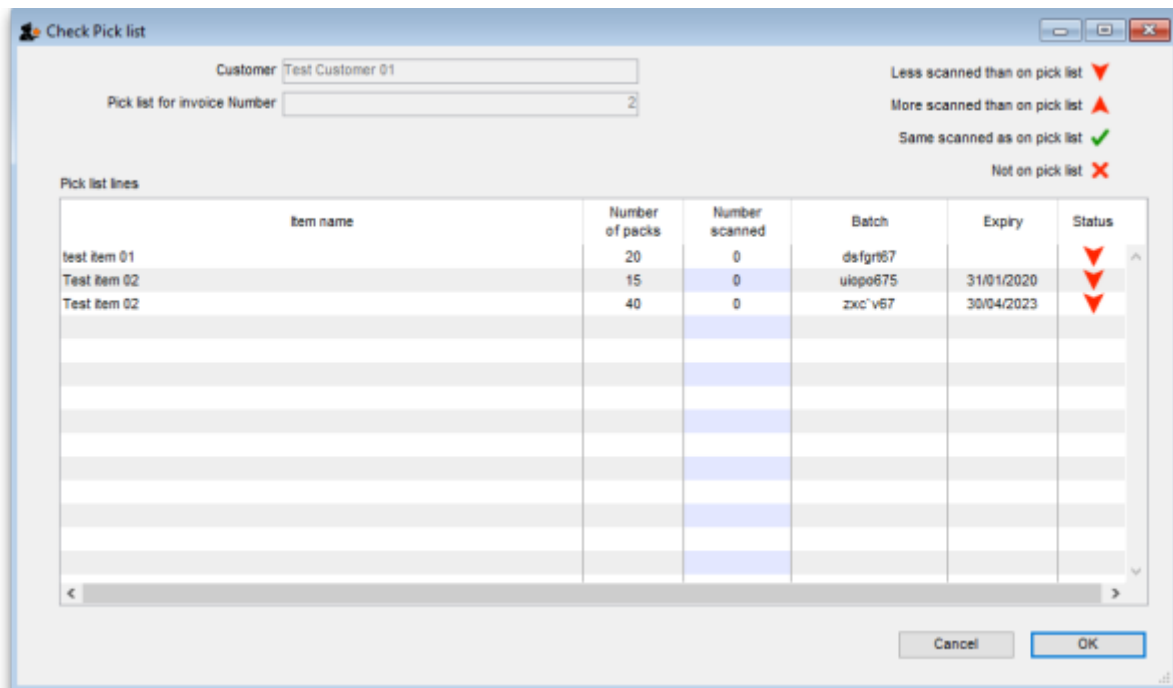
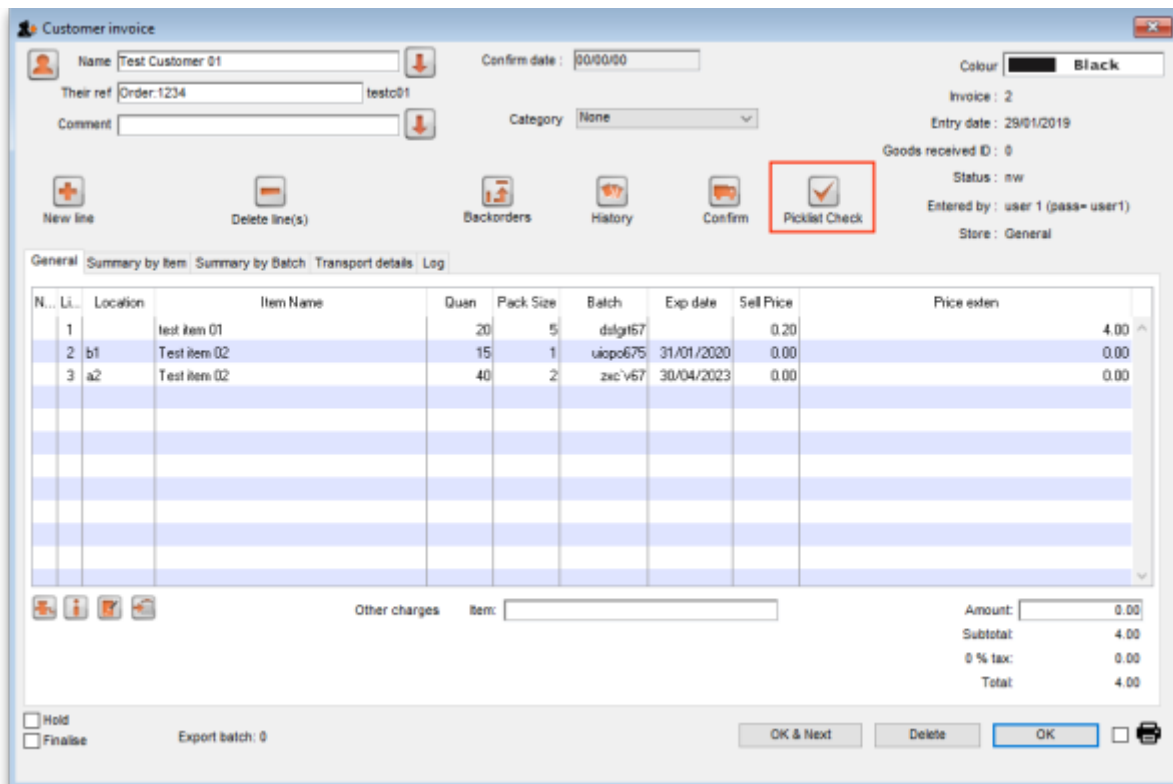


Barcode scanning and pick list checking

Added: Version 4.01

Another way barcode scanning can be useful is in checking that goods picked off the shelf for distribution to a customer match what was on the pick list.



Previous: [Barcode scanning and stocktaking](#) Next: [Barcode label printing](#)

From:

<https://docs.msupply.org.nz/> - **mSupply documentation wiki**

Permanent link:

https://docs.msupply.org.nz/barcode_scanning:pick_checking?rev=1548774227

Last update: **2019/01/29 15:03**

