

15.03. Barcode scanning and receiving goods

Added: Version 4.01

When you receive goods into mSupply, that is when you tell mSupply about the barcode that belongs to each line of stock. At the moment it is not possible to receive stock using a barcode scanner (the functionality is coming soon though - watch this space) but this is still the point in your process where you tell mSupply about the barcode that belongs to each line of stock.

This is a vitally important step: once the barcode associated with the stock you receive is recorded, mSupply can recognise it anywhere when you scan it later.

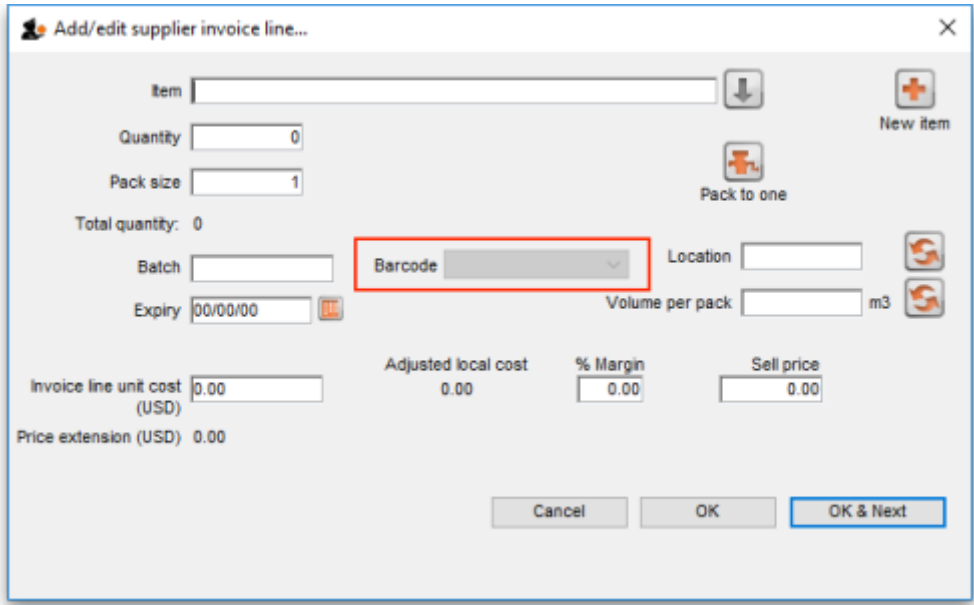
The linking of barcodes with received stock is carried out on a supplier invoice.

Create a supplier invoice in the normal way (either manually (see [Receiving goods - a supplier invoice](#) or by finalising a goods received note (see [Goods receipt notes](#))). If the *We use barcode scanners* preference is turned on (see [Barcode scanning preferences](#)), this is what a blank supplier invoice window looks like:

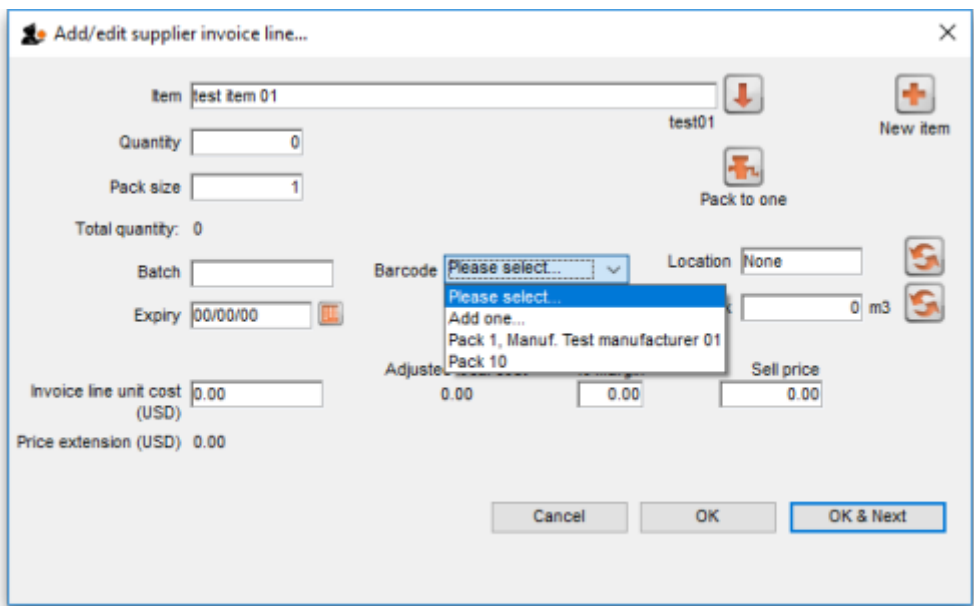
The screenshot shows the 'Supplier invoice' window in mSupply. The window title is 'Supplier invoice'. It contains several input fields: 'Name' (Test supplier 01), 'Their ref' (testsup01), 'Comment', 'Confirm date' (00/00/00), 'Category' (None), 'Colour' (Black), 'Invoice number' (0), 'Entry date' (28/01/2019), 'Status' (nw), 'Goods received ID' (0), and 'Purchase Order ID' (0). There are three buttons: 'New line', 'Delete line', and 'Print barcode labels' (highlighted with a red box). Below these are tabs for 'General', 'Summary by Item', 'Summary by Batch', 'Price', and 'Log'. A table with columns 'L...', 'Lo...', 'Item Name', 'Qty', 'Pack', 'Batch', 'Expiry', 'Cost Price', 'Sell Price', and 'Price extension' is shown. At the bottom, there are 'Other charges' fields for 'Item(s)' and 'Amount' (0.00), and a summary section with 'Subtotal: 0.00', '0 % tax: 0.00', and 'Total: 0.00'. The bottom of the window has checkboxes for 'Hold' and 'Finalise', 'Export batch: 0', 'Margin: 0.00', and buttons for 'OK & Next', 'Delete', and 'OK'.

It is exactly the same as a standard supplier invoice, except for an additional *Print barcode labels* button (see [Barcode label printing](#) for details)

Clicking on the *Add line* button shows an extra *Barcode* field on the invoice line window:



When the item has been selected in the usual way, the *Barcode* drop down list is filled with a list of all the barcodes assigned to the item, showing the pack size and manufacturer for each:



If one of the barcodes matches the stock that is being received, select it: this will set the *Pack size* field to match the pack size that belongs to the barcode. You can still manually edit the *Pack size* field but if it doesn't match the barcode you have selected when you click on the *OK* or *OK & Next* buttons, you will be warned and told to correct it (either select another barcode with a matching pack size or alter the pack size).

If none of the barcodes in the drop down list match the one on the stock, you can click on the *Add one...* option. This will immediately open the *Add barcode* window so you can add the new barcode. See [Adding barcodes to items](#) for details.

Note that once you have selected a barcode, the *Please select...* option in the **Barcode** drop down list becomes *Remove barcode* to show that selecting this option will remove the barcode from this line.

When you are using barcode scanning, you must select a barcode from the *Barcode* drop down list,

you will not be allowed to add the line without it.

Manually assigning barcodes to stock lines

Sometimes it might be necessary to manually add or edit the barcode that belongs to a stock line. For example, any stock you have in mSupply before you turn on the barcode functionality will not have barcodes entered against it they will need to be added manually. Or an incorrect scan may have been made at goods receipt and the barcode might need to be changed.

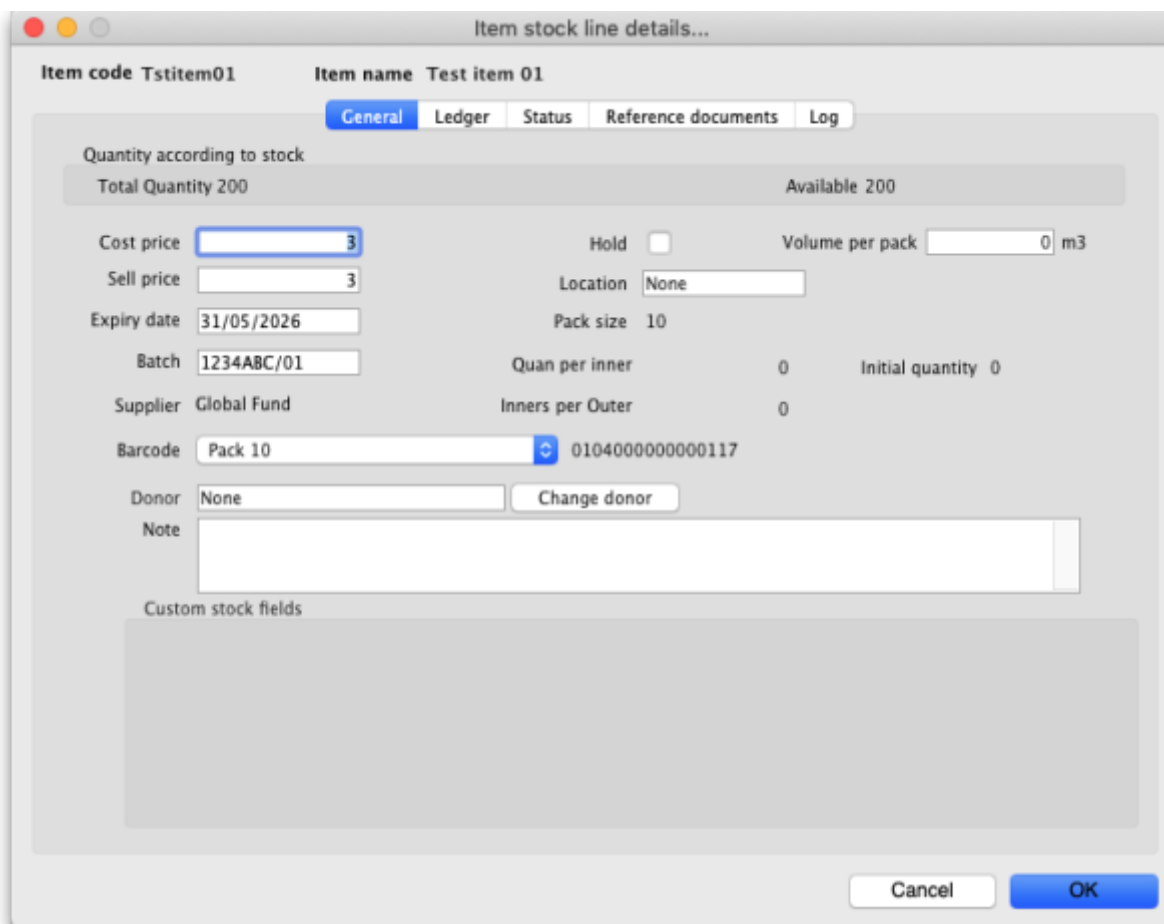
To do this, first choose Items > Show items from the menus, search for the item whose stock you wish to edit and open its details window by double-clicking on it. Then click on the *Stock* tab:

The screenshot shows the 'Item details' window with the 'Stock' tab selected. The window contains the following elements:

- General Information:** Item name: Test item 01, Item code: Tstitem01, Store: General.
- Actions:** Show zero lines, Print, Split, Update sell prices, Show related invoices, Consolidate, Labels, Print barcode labels.
- Stock Table:**

Line	Available packs	Total packs	Hold	Pack size	Batch	Expdate	Supplier	Manufacturer	Donor	Location	Cost Price	Sell Price	S
1	200	200	<input type="checkbox"/>	10	12.../01	31/05/2026	C/F				3.00	3.00	
- Stock Summary:**
 - Minimum stock: 0, Total stock value: 600.00
 - Stock on hand: 2,000, Average unit cost: 0.30
 - Stock on order: 0, Total Volume: 0.00
- Non stock items:**
 - Non stock item:
 - Default customer:
- Months Cover:**
 - Based on: 0 months usage, months usage: Calculate
 - Exclude stock with expiry date less than: 3 months
 - Generating an order for: 0 months stock will order a quantity of
- Buttons:** Delete, OK & Previous, OK & Next, Cancel, OK.

Now double-click on the stock line whose barcode you wish to change. This will open the stock line details window:



The **Barcode** drop down list displays the current barcode assigned to the stock line (it will say *Please select...* if it has no barcode assigned). The current barcode will also be shown to the right of the drop down list, as in the screenshot, if one is currently assigned.

Click on the drop down list and you will be shown a list of all the barcodes of the same packsize as this stock line for this item. You can select any one of these or the *Add one...* option to open a new window to add a new barcode (see the [14.02. Adding barcodes to items](#) page for details on that window).

If a barcode is already assigned to the stock line, the first option in the **Barcode** drop down list will be *Remove barcode* - select this if you want to remove the barcode current assigned of this stock line.

Previous: [15.02. Adding barcodes to items](#) | | Next: [15.04. Barcode scanning and stocktaking](#)

From:
<https://docs.msupply.org.nz/> - mSupply documentation wiki

Permanent link:
https://docs.msupply.org.nz/barcode_scanning:receiving_goods?rev=1663122356

Last update: 2022/09/14 02:25

