

Barcode scanning and stocktaking

Added: Version 4.01

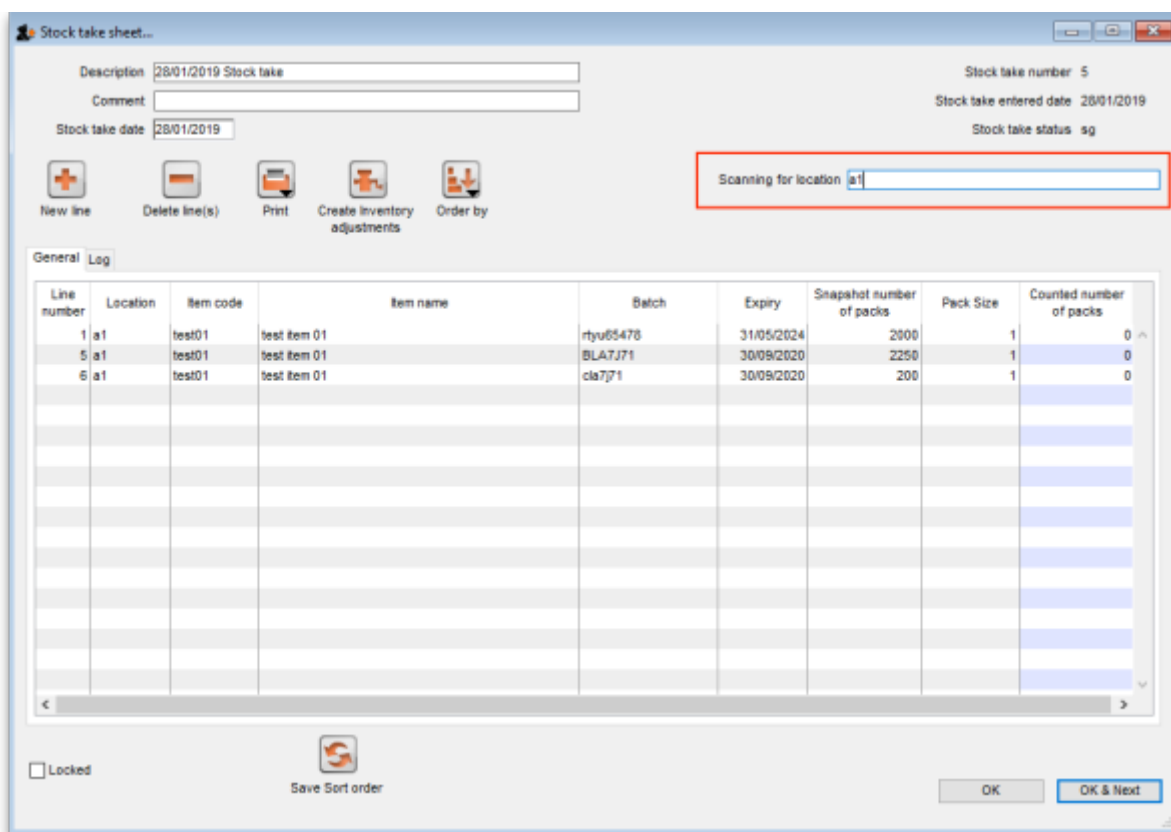
During a stocktake, it is possible to save a lot of time and increase accuracy by using barcode scanners to scan stock instead of manually counting it.

Stocktaking with barcode scanners is a little different to doing it without them. With barcode scanners, the assumption is that you will go to a particular location in your warehouse and then scan everything in that location. As you scan, mSupply counts the stock in that location. This means two things:

1. You must tell mSupply which warehouse location you are currently counting
2. When first created, a stocktake with barcode scanning turned on has a zero in the *Counted number of packs* column for every line. Without barcode scanning turned on, the *Counted number of packs* is set to the *Snapshot number of packs* when it is first created.

Here's how it all works.

Create a stocktake in the usual way (see [Stocktakes](#) for details). The stocktake window is exactly the same as when not using barcode scanners, except that the item filter has changed to a location filter:



Edit the *Description* and *Stocktake date* fields as required as usual and enter any comments in the *Comment* field. Now enter the location you are going to count in the *Scanning for location* field. As you type the location name, the lines that have locations starting with what you have typed remain displayed in the table, all others are hidden (The line's locations are shown in the *Location* column). What you enter in the *Scanning for location* field must result in lines for a single location only being

displayed in the table. If you start scanning before this is the case you will be shown a warning message and nothing will be counted.

Note:

- The *Scanning for location* field is not case sensitive
- You can enter "none" in the *Scanning for location* field if you want to count the lines that have no location. Very handy if you don't use locations in your warehouse.

When you have correctly entered the location you want to count in the *Scanning for location* field, you can start scanning the physical stock in that warehouse location. Be careful to scan the correct GS1 barcodes on the stock. mSupply will ignore anything you scan that is not GS1 compliant.

There are a number of possible outcomes of the scan:

Scan result	What mSupply does	What you should do
The barcode you scanned matches one of the lines in the location you are scanning for	The line's <i>Counted number of packs</i> value is increased by 1	Keep on scanning!
The barcode matches a line in the stocktake that is not in the current location	mSupply asks you whether you want to move the line to the current location. If you say yes, the line's location is changed to the current location and its <i>Counted number of packs</i> value is increased by 1. If you say no, the	
The barcode is not a valid GS1 barcode	mSupply displays an error message and the scan is ignored	
The barcode is a valid GS1 barcode but it is not registered against an item in mSupply	mSupply displays a warning message and ignores the scan	

Previous: [Barcode scanning and receiving goods](#) Next: [Barcode scanning and pick list checking](#)

From: <https://docs.msupply.org.nz/> - **mSupply documentation wiki**

Permanent link: https://docs.msupply.org.nz/barcode_scanning:stocktaking?rev=1548766956

Last update: **2019/01/29 13:02**

