

10.01. Dispensary mode

Dispensary mode allows you to issue medicines to individual patients. It is ideally suited for pharmacies, clinics, hospital dispensaries, and facilities where medicines are supplied to individual patients.

In dispensary mode:

- Prescription data can be entered into mSupply including:
 - [Patient details](#)
 - [Prescriber details](#)
 - [Prescribed items](#)
 - [Item directions](#) which can be quickly selected from standard abbreviations, and edited as necessary. Item directions can be printed in languages other than English.
- **Labels** can be printed with:
 - Item description and quantity issued
 - Patient name
 - Prescriber name
 - Directions
 - Institution name
 - More...
- [Patient histories](#) are recorded, allowing repeat prescriptions to be:
 - [Duplicated](#)
 - [Repeated](#)
- **Prescription payments** can be recorded



- Use of Dispensary mode depends on your mSupply registration type. Contact Sustainable Solutions if you wish to upgrade your registration.
- Regardless of mode, each user can only use those functions for which they have [permission](#).
- In client-server versions of mSupply, different users can be logged in in different modes at the same time, allowing you to dispense to patients and supply wards, stores, clients or cost centres simultaneously.
- Users whose permissions allow them to operate in either Store mode or Dispensary mode may change from one to the other by pressing *Ctrl+2* on the keyboard. Re-entry of the user's password is not necessary.

Activating dispensary mode



Prior to version 3.5 you controlled dispensary mode for each user, and had to choose **File > Edit users...**
Now it's a setting for a store.

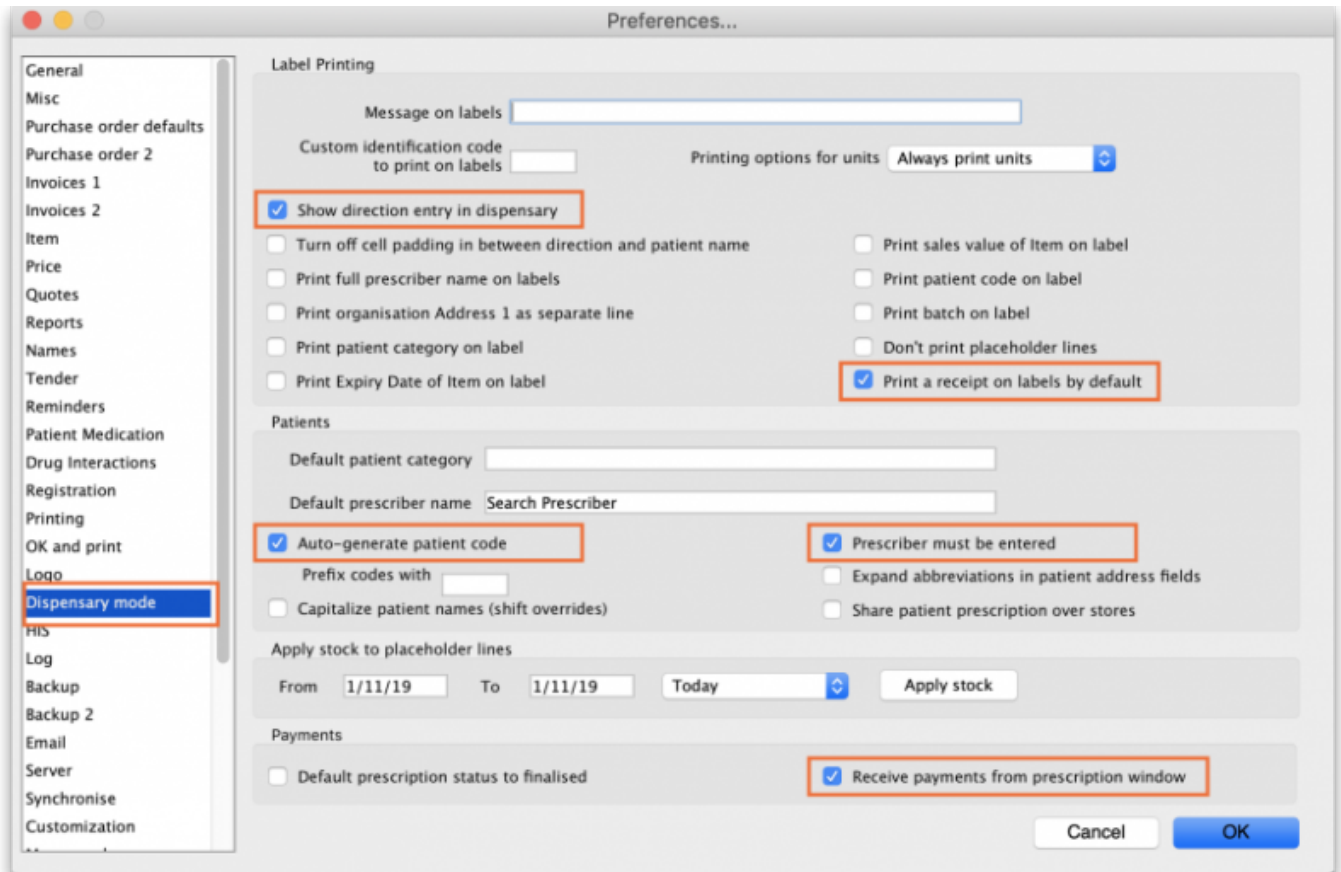
1. Choose **Special > Show stores...** from the menu.
2. Double-click on the store you want to set to dispensary mode.
3. Select **Dispensary** in the drop down list next to the store's code field.
4. Log out of the store and log in again to activate dispensary mode.

Setting dispensary mode preferences

Click **Admin > Preferences > Dispensary mode** to set preferences.

Important preferences to consider:

- Ensure the **Show direction entry in dispensary** box is ticked. This allows users to enter patient directions for dispensed items.
- Specify what information will be printed on **dispensing labels**.
- Specify if you want a **receipt** to automatically print on labels.
- Specify if you want mSupply to **auto-generate patient codes** (alternatively, the user must enter a unique code for each patient).
- Specify if a **prescriber** must be entered for each prescription.
- Specify if you want to be able to **receive payments** from the prescription window.

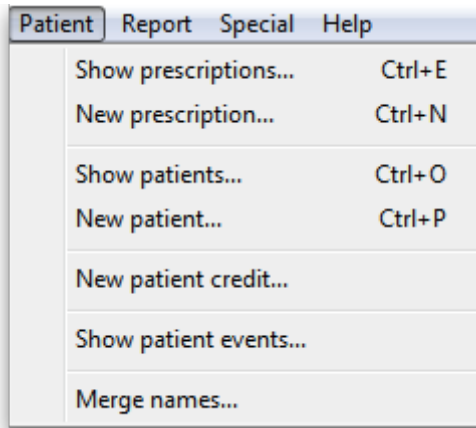


What changes in dispensary mode?

Most of the things you can do in store mode are also available in dispensary mode. The main differences are:

- The **Customer** menu becomes the **Patient** menu; and
- The **Customers** tab on the navigator becomes the **Patients** tab, which has a slightly different selection of icons
- The windows displayed are appropriate for dispensing medicines to individual patients. For example, a patient's dispensing history is maintained and you can also record patient notes (e.g. allergies).

Note that a facility using dispensary mode can distribute stock to both patients **and** customers (e.g. hospital wards, outreach programs), and can still handle customer requisitions.



Previous: [10. Dispensing Goods](#) | | Next: [10.02. Prescription entry](#)

From:
<https://docs.msupply.org.nz/> - **mSupply documentation wiki**

Permanent link:
https://docs.msupply.org.nz/dispensing:dispensary_mode?rev=1588861702

Last update: **2020/05/07 14:28**

