

Imprest work flow

Version : v3.11 or v3.12 or later

The impost module allows a pharmacy or warehouse to decide on quantities of drugs its receiver facilities (customers or [Virtual stores](#)) should receive. Periodically a stock take is carried out at the customer's site and drugs are replenished to meet the predefined (imprest) level.

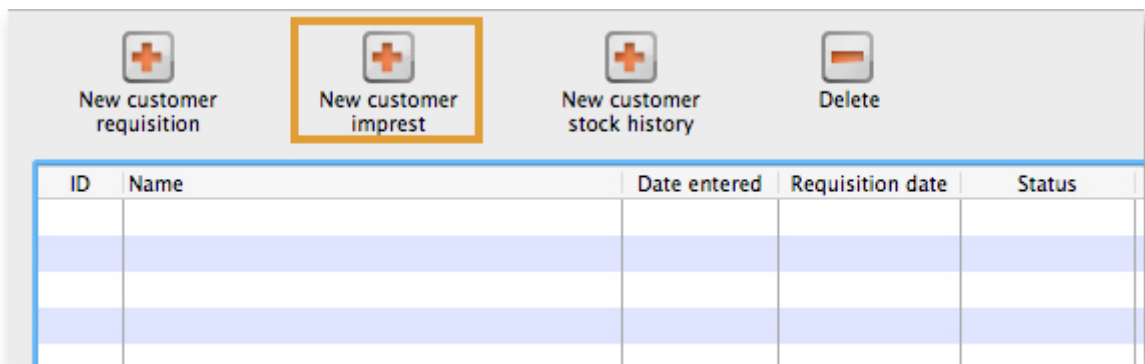
The tutorial below suggest how an impost should now be carried out.

We will assume that the facility or customer has been assigned with a suitable impost list. If this is not the case then please do the following:

- Select Item > Show Item master list... from the menus to create a master list (see [here](#) for details).
- Assign the master list to the customer. See [Names: Using, adding and editing, the Item lists tab](#) for instructions.

Create an Imprest

Click on 'Requisitions' in the 'Customer' (or Patients!) tab.. Click on the *New customer impost* icon in he window which appears.



Type the first few characters of the customer name in the Name field and press tab. A List of matching customers is displayed (unless only one customer name matches what you entered). Choose the intended customer and click the *Use* button.



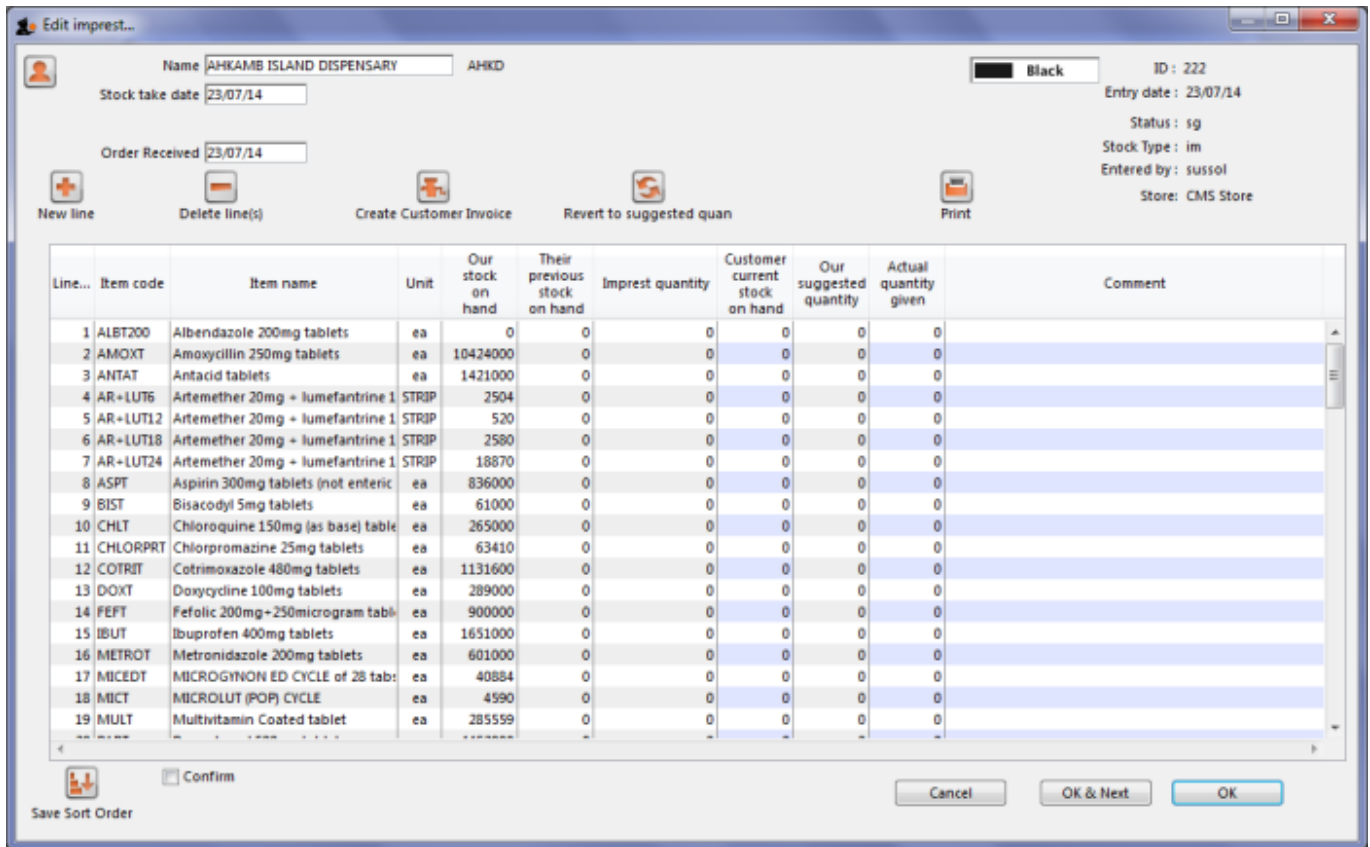
At this point the master list of items associated with the customer is displayed in its default sort order.

Print the imprest

The image below shows an example of what you now see: a list of items with their required imprest quantities. The next task is to print the list and carry out a physical stock take at the customer site.

First of all, make sure the list is in the correct order. If it is, fine. If not, re-order it as appropriate (by clicking on the column headers or dragging items up or down the list) and click on the *Save Sort Order* button.

Now print the list by clicking on the *Print* button and selecting the "Customer stock takes" option as show below. Please note that after printing the list you should not re-order it - it will be confusing later when you come to enter the counted quantities for each item.

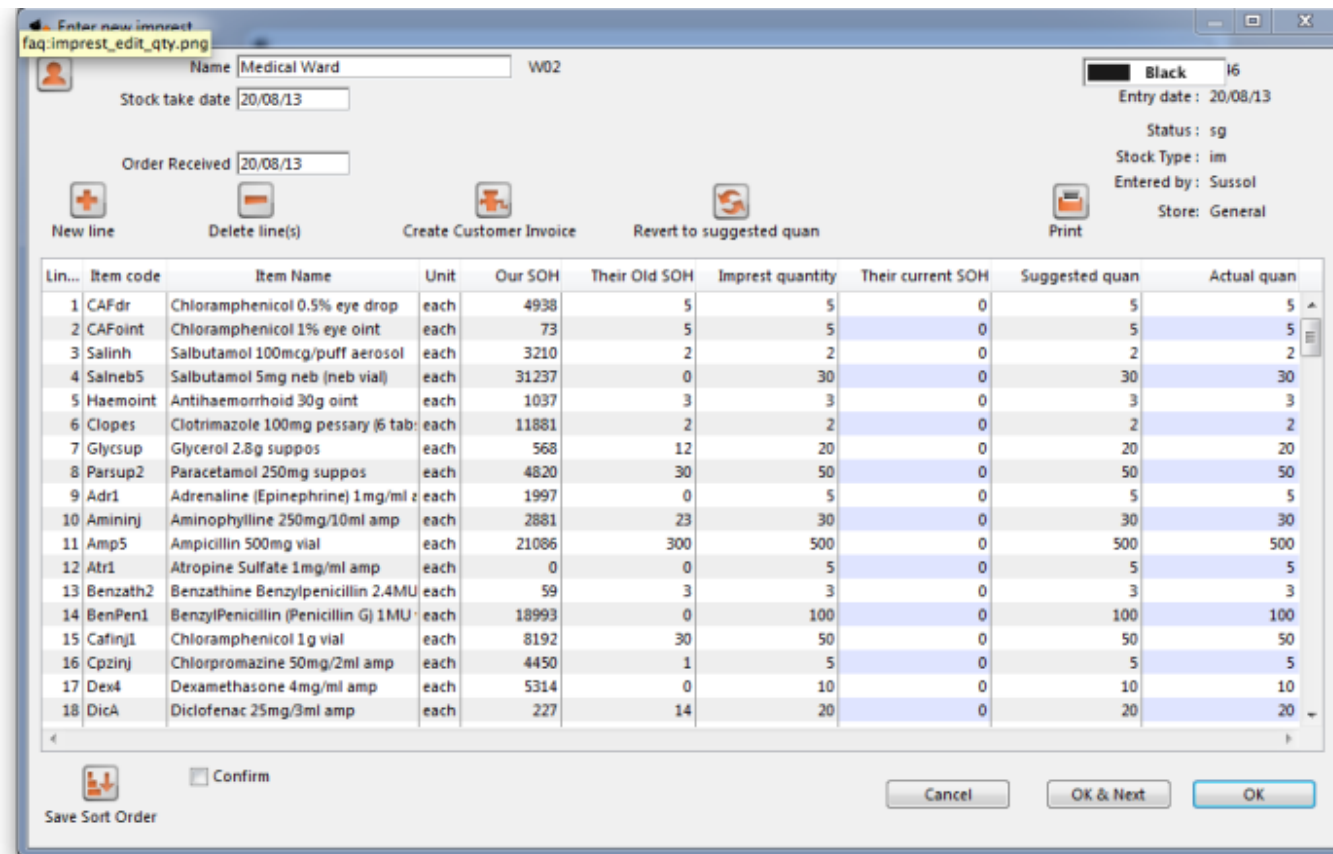


Now, using the printout, carry out the actual stock take.

Updating the stock quantities

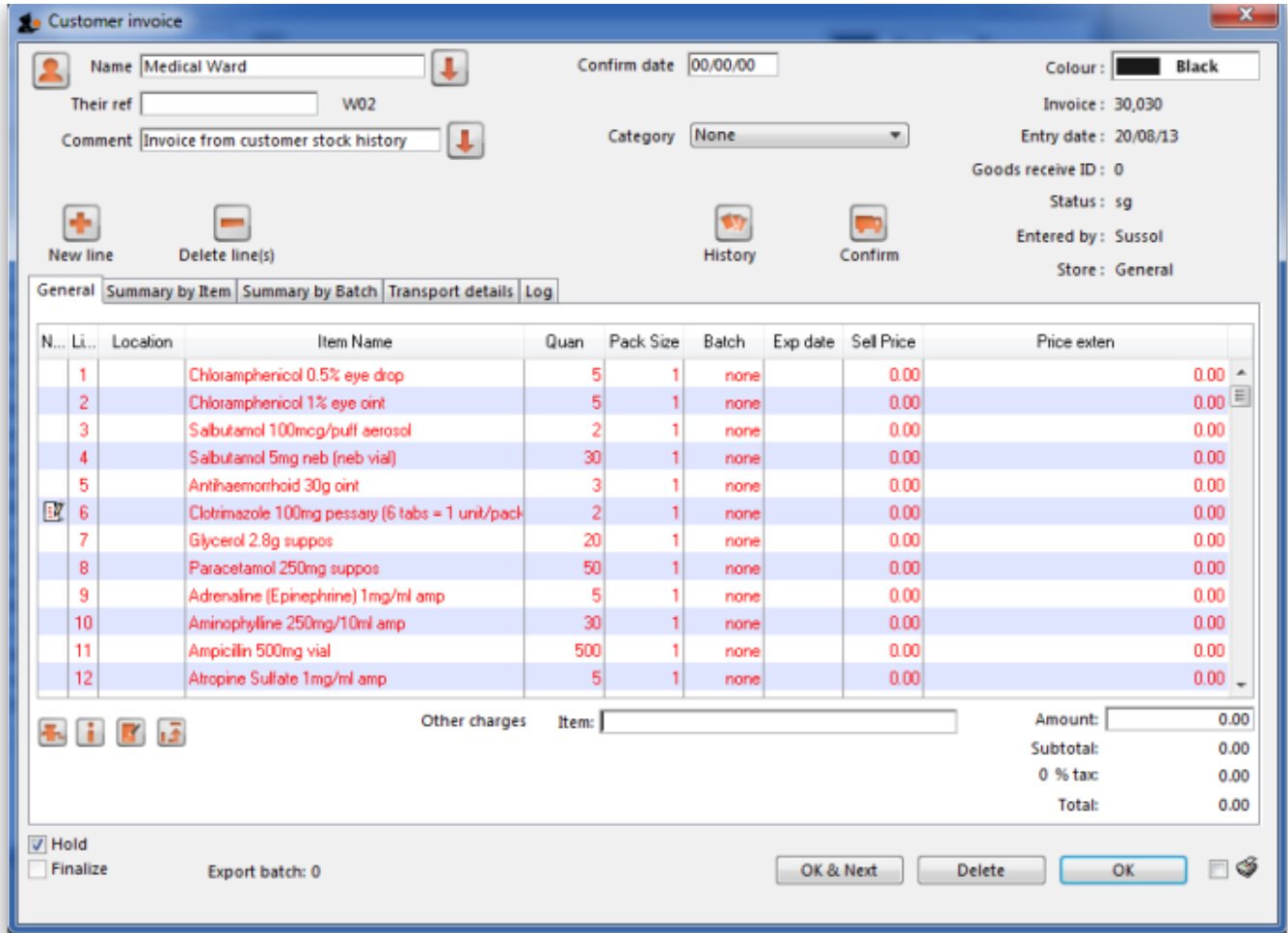
After carrying out actual stock take at the customer's site it's time to enter the actual stock quantities. In the window displayed below, edit the value in the *Their current SOH* column with the stock take quantities you've written on the print out for each item (Note: SOH means Stock On Hand).

mSupply automatically completes other two columns, *Suggested Quantity* and *Actual Quantity* (The simple formula $\text{Imprest quantity} - \text{stock remaining} = \text{order quantity}$ is used to fill in these columns).



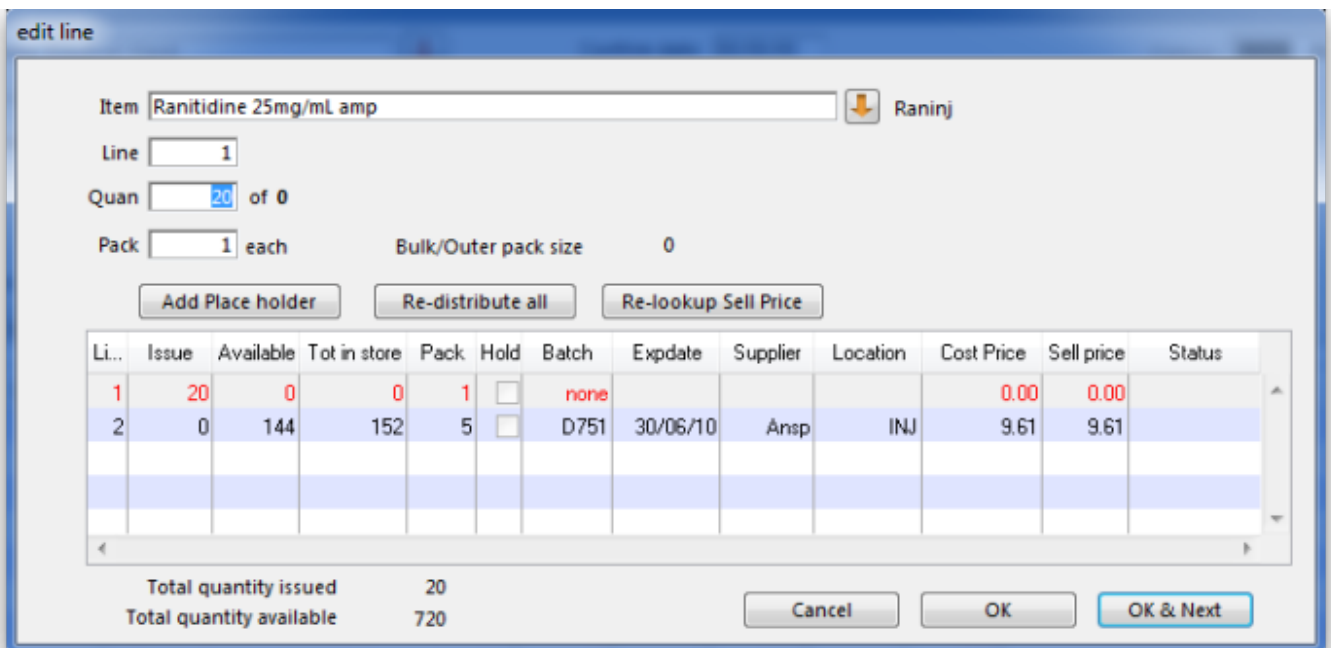
Assigning stock

Once the updating of stock quantities is done and you are satisfied, you can click the *Create customer invoice* button to assign stock to the customer. Clicking the button will open the following window:

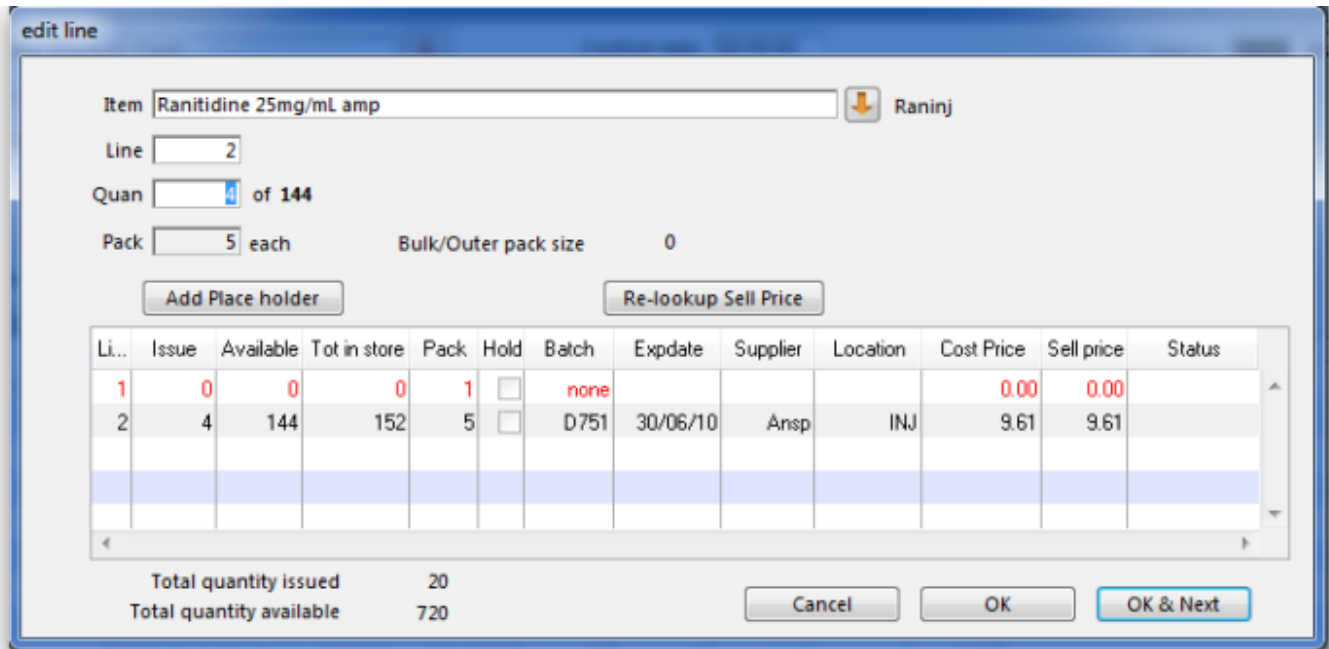


All the entries appear in red - they are **placeholder** lines which have the correct quantity but have no batch chosen (notice 'none' in the batch column for each line). You have to double-click each line in turn and select which batches you wish to assign to the customer.

As an example, you will see the window below when you double click an item line:



Normally you would click on the *Re-distribute all* button to have mSupply make the appropriate selection for you (it chooses batches with shortest expiry first). Having done that, the window now appears like this:



Clicking on *OK & Next* displays the next item on the invoice. When the final item has been processed, clicking on *OK* or *OK & Next* will display the complete invoice (all red lines replaced with black lines with the chosen batch displayed). The image below shows the invoice part way through this process:

Customer invoice

Name: Medical Ward Confirm date: 00/00/00 Colour: Black

Their ref: W02 Invoice: 30,030

Comment: Invoice from customer stock history Category: None Entry date: 20/08/13

Goods receive ID: 0

Status: sg

Entered by: Sussol

Store: General

Buttons: New line, Delete line(s), History, Confirm

Tabs: General, Summary by Item, Summary by Batch, Transport details, Log

N...	Li...	Location	Item Name	Quan	Pack Size	Batch	Exp date	Sell Price	Price exten
16E			Lancets Pricker (200s)	1	1	none		0.00	0.00
167			Specimen container - stool	10	1	none		0.00	0.00
16E			Specimen container - urine	20	1	none		0.00	0.00
16E			Urine teststrips Combo (Multistix) (50s/100s)	1	1	none		0.00	0.00
17C			Urine teststrips Glucose (DiasixR) (50s/100s)	1	1	none		0.00	0.00
171			Urine bag 2000ml	20	1	none		0.00	0.00
1	LTE		Chloramphenicol 0.5% eye drop	5	1	0908126	31/08/11	1.95	9.75
5			Salbutamol 5mg neb (neb vial)	30	1	Fw0256	31/07/10	0.45	13.50
6			Antihæmorrhoid 30g oint	3	1	GL08001	31/12/10	2.46	7.38
7	LTE		Clotrimazole 100mg pessary (6 tabs = 1 unit/pack)	2	1	ID9FMMC	13/04/12	2.71	5.43
8			Glycerol 2.8g suppos	20	1	821142	25/04/10	0.00	0.00
9	LTE		Paracetamol 250mg suppos	50	20	B2555-2A	30/07/10	10.16	508.00

Other charges: Item: _____ Amount: 0.00

Subtotal: 544.06

0 % tax: 0.00

Total: 544.06

Buttons: Hold, Finalize, Export batch: 0, OK & Next, Delete, OK

When you've selected batches for every line, make sure the *Hold* checkbox is not checked then confirm the invoice to assign the stock to the customer. Now all you have to do is print off the pick list, physically pick the stock off the shelves and send it to the customer. Congratulations - job done!

Previous: [How To Report by Invoice Category](#) Next: [FAQ: Tips and Tricks](#)

From: <https://docs.msupply.org.nz/> - mSupply documentation wiki

Permanent link: https://docs.msupply.org.nz/faq:imprest_work_flow?rev=1521511202

Last update: 2018/03/20 02:00

