
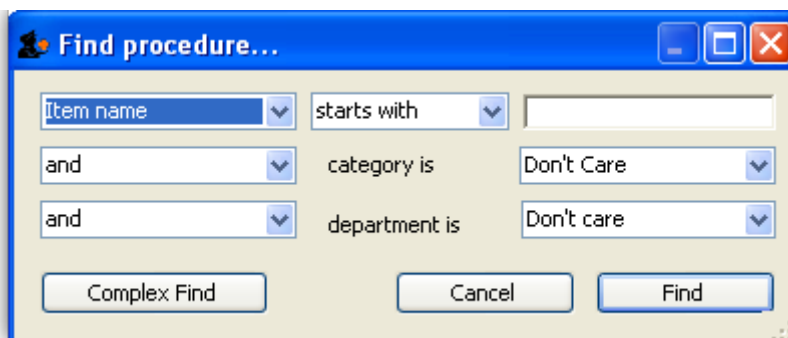


18.04. Procedures

 Internally, a procedure in HIS is treated like a service item in mSupply, so many of the same concepts apply - see [Items](#)

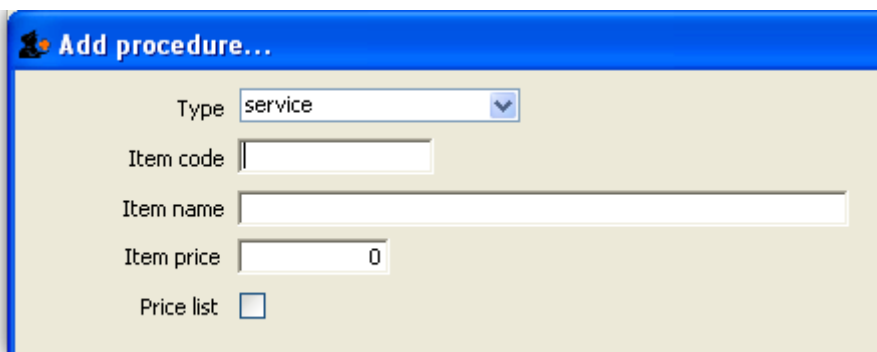
The **Special > Show procedures** menu item allows you to track surgical and other procedures performed on patients. It brings up the following window:



After setting the parameters, and clicking on OK, it will either show the list of procedures:



in which case, you can double-click on a procedure to view/edit it or select *New item* to create a new one. Or, if there are no existing procedures, it will go straight to the *Add procedure* window:



The type of a procedure is fixed as “service”. As for items, once a procedure has been added, there are extra fields and tabs available. However, only a subset of the normal item fields are available.

Procedure details...

General...
Item name: **New Procedure**
Item code: abcdef
Category: None
Item flag:
Catalogue code:
Hide in this store:

Store: Hospital Info System

Pricing
Default margin: 0
Default price: 2,000.00

Full description

Custom fields...
user_field_1
user_field_2
user_field_3
user_field_4
user_field_5
user_field_6
user_field_7

Previous: [ICD10 disease codes](#) Next: [Other lists](#)

From:
<https://docs.msupply.org.nz/> - **mSupply documentation wiki**

Permanent link:
<https://docs.msupply.org.nz/his:procedures?rev=1569209383>

Last update: **2019/09/23 03:29**

