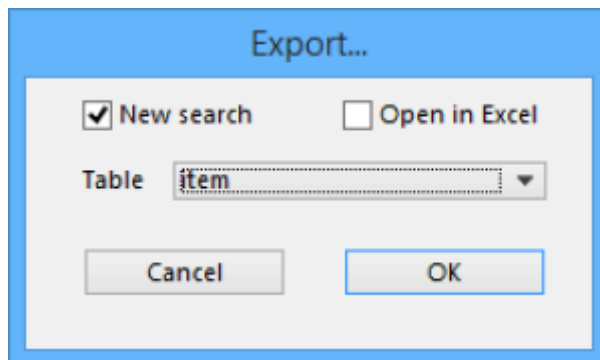


16.13. Exporting records

Choosing *Export* on the *File* menu will display the export window, allowing you to export records from *mSupply* to a file.



You can search for a set of records by checking the *New search* check box, which displays the Query editor for you to specify your search criteria, or else use the currently selected records.

If you tick the *Open in Excel* button *mSupply* will export any output to your spreadsheet application and will allow you to edit the Headings etc within your spreadsheet. Otherwise *mSupply* will open a basic editor that will allow you to shape the look of the document.

After you click *OK* the Query Editor will open allowing you to filter the data you would like to export. Clicking on a field on the left will add it to the filter criteria shown at the top. You then can add from the list of Comparisons and enter your own value in the text field below. To add another line of criteria click the *Insert Line* button. Likewise to remove a line highlight the line and click the **Del Line** button.

Query

Query Editor

Save... Load...

Available Fields:

Related Tables

2 ID
A item_name
17 start_of_year_date
T manufacture_method
0.5 default_pack_size
dose_picture
A atc_category
T

Comparisons:

is equal to
is not equal to
is greater than
is greater than or equal to
is less than
is less than or equal to
contains
does not contain
contains keyword

Value

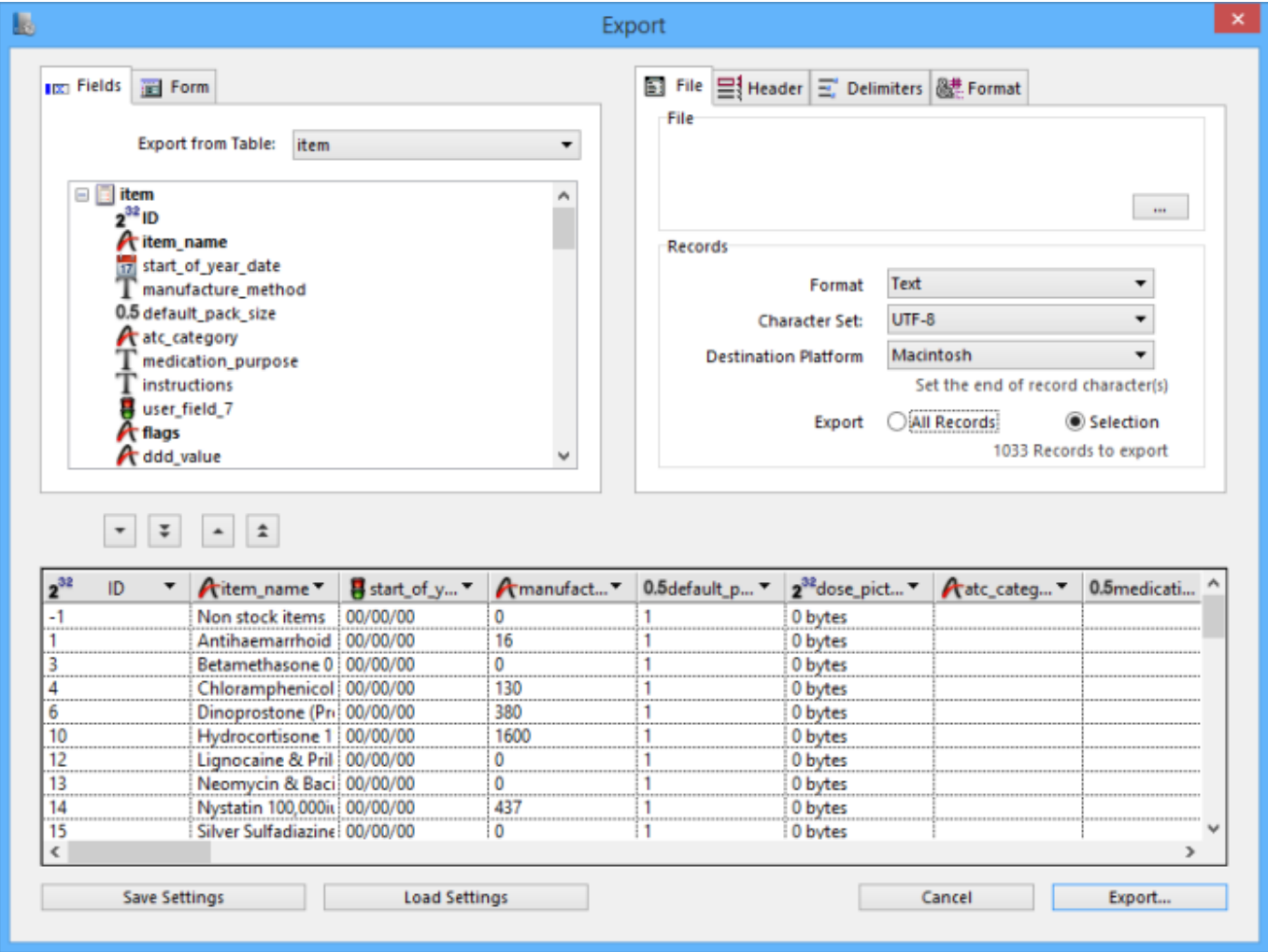
And Or Except

Clear All Del Line Insert Line Add Line

Cancel Query in selection Query

Once you have chosen your filtering criteria and if you did not click **Open in Excel** the the Export Editor will open. This is where you can choose what fields to export.

You can add a field by highlighting it in the Fields box and clicking on the down arrow below it or you can remove a field by highlighting it in the preview window at the bottom of the page and clicking the up arrow. If you want to add or remove all fields click the double arrows.



If you want the fields to be ordered ready for item import, unzip the attached .4si file.

items_export_order.4si.zip

Previous: [17.15. Exporting names](#) | | Next: [17.17. Exporting invoices](#)

From:

<https://docs.msupply.org.nz/> - mSupply documentation wiki

Permanent link:

https://docs.msupply.org.nz/import_and_export:export_records?rev=1618912686

Last update:

2021/04/20 09:58