

# 8.07. Stock control methods for your customers (requisitions)

## Stock supply philosophy

mSupply is designed for situations such as a central supply facility within a country or region, or within a hospital where the supply of stock to customers is controlled by the supplying facility. That is, supply of stock to customers is managed by the supplying store.

Regardless of who controls the supply of stock, it needs to be made principally on the basis of information about the customer's anticipated usage. mSupply has several ways of arriving at quantities to be supplied to customers, in rough order of sophistication:

- If there is **NO** information from the customer about item usage (AMC) or stock levels, then the supplying store can only 'push' stock to the customer by [Creating a new Customer Invoice](#) with quantities derived from some other sources.
- If the customer has sent a manual (paper or email) 'order' or 'requisition' for stock, containing just the quantities of each item required, then the supplying store is informed by these quantities when preparing the Customer Invoice. It is often helpful to keep a record of the quantities that the customer has ordered, especially if the issued quantities are different to what was requested. To achieve this, a [New customer requisition](#) can be created, recording these requested quantities. The Customer Invoice can be created easily from this requisition.
- [The imprest method](#) is common in hospitals where the customer can provide the current Stock on Hand (SoH) and there is a long and relatively stable track record of item consumption, from which 'Imprest values' have been calculated manually, outside of mSupply.
- [The stock history method](#) is similar to the imprest method, but lets mSupply calculate the 'imprest values' automatically.
- [Response requisitions](#) is more accurate method for cases where the customer's SOH and AMC for each item are known. This should be the case if the customer is an mSupply store.
- [Full Entry of Request & Requisition Forms by the Supplying Facility](#) is an enhancement to the standard response requisition method. This feature was developed for Côte d'Ivoire but can be activated for any country on request.

With the exception of the 'Push' method, collectively, these are grouped together as different types of **requisition**. When editing an item, you can view all types of requisition records for that item. More information is available on the [requisitions](#) page.



- If the customer is an mSupply store which is being operated correctly (issuance is being recorded, and so mSupply records of the customer's AMC and SOH for each item are realistic), then [Response requisitions](#) is the appropriate method to use.
- If the customer is *not* an mSupply store, then the customer's SOH and AMC are not populated through mSupply and a [New customer requisition](#) is appropriate.



- If the customer *is* an mSupply store but is not being operated correctly (issuance is not being recorded), then the customer's SOH and AMC for each item are likely unrealistic. In these cases, you can still process any [Response requisitions](#), but be **extremely cautious** about the customer's SOH and AMC values. If they have not submitted an internal order to create the [Response requisition](#), then it is generally appropriate to use one of the more basic requisition types: [New customer requisition](#), ([The imprest method](#) or [The stock history method](#)).



Pack sizes for all requisitions are 1 (one)



It is possible for all of these methods to be done by programme if required - see the [4.05. Programs](#) page for details.

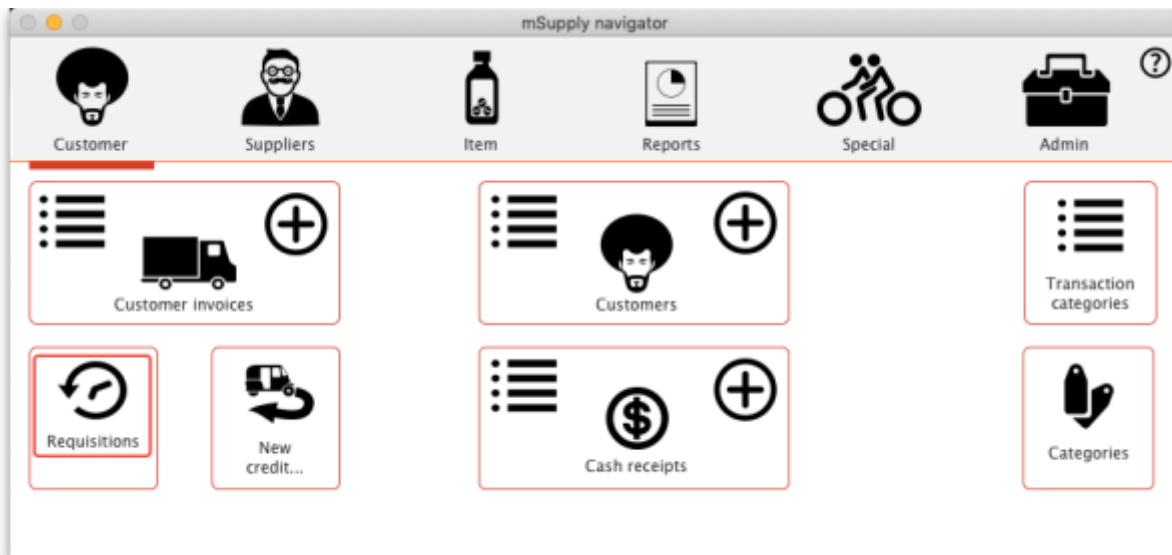
## Defining the list of items to be included in the re-supply

The lists of items that a customer can receive can be defined by master lists.

See the [4.04. Item master lists](#) page for information on managing master lists and see the [Assigning a list to a customer](#) section for how to assign a master list to a customer.

## Viewing existing requisitions

Choose *Customer > Show requisitions...* from the menus or click on the Requisitions icon on the Customers tab of the Navigator:



This window will open, showing you a list of the requisitions already in the system. The *Status* column shows you know the [Requisition status](#). The *Type* column shows the [Requisition type](#):

Requisition list

Show: Approved - ready to pro...

ID	Name	Program	Period	Date entered	Requisition date	Status	Type	Authorisation status	Comment
4706	LABORATORY General			15/07/2025	15/07/2025	sg	response	authorised	From request requisition 376 ( a urgent one)
4689	WII REGIONAL store			15/07/2025	15/07/2025	sg	response	none	From request requisition 268
4672	Lucid Store			10/07/2025	10/07/2025	sg	response	authorised	From request requisition 1108
4669	Jaguar Store			10/07/2025	10/07/2025	sg	response	authorised	From request requisition 985
4670	Red Ridding Wood Lab			10/07/2025	10/07/2025	sg	response	authorised	From request requisition 110
4668	LABORATORY General			10/07/2025	10/07/2025	sg	response	authorised	From request requisition 375
4666	Divyani Store			09/07/2025	09/07/2025	sg	response	authorised	From request requisition 1193 ( a rainy order )
4665	Alan Jones Store			09/07/2025	09/07/2025	sg	response	authorised	From request requisition 420
4664	LABORATORY General			09/07/2025	09/07/2025	sg	response	authorised	From request requisition 374
4663	Camila Store			09/07/2025	09/07/2025	sg	response	authorised	From request requisition 397
4658	Lucid Store			08/07/2025	08/07/2025	sg	response	authorised	From request requisition 1100
4657	LABORATORY General			08/07/2025	08/07/2025	sg	response	authorised	From request requisition 373
4656	LABORATORY General			08/07/2025	08/07/2025	sg	response	authorised	From request requisition 372 ( the driver needs to be warned )
4654	Angalca Store			07/07/2025	07/07/2025	sg	response	authorised	From request requisition 270
4655	LABORATORY General			07/07/2025	07/07/2025	sg	response	authorised	From request requisition 371
4651	Laurance Jones Store			04/07/2025	04/07/2025	sg	response	authorised	From request requisition 411
4650	Reagon Store			04/07/2025	04/07/2025	sg	response	authorised	From request requisition 274
4635	LABORATORY General			01/07/2025	01/07/2025	sg	response	authorised	From request requisition 370
4647	LABORATORY General			30/06/2025	30/06/2025	sg	response	authorised	From request requisition 369
4626	Jaguar Store			30/06/2025	30/06/2025	sg	response	authorised	From request requisition 973

Double click on row to edit details

Columns in the table:

- **ID:** Unique identifier of the requisition.
- **Name:** The name of the customer the requisition has been entered for.
- **Program:** If the program module has been enabled.
- **Period:** This is displayed as part of the program module.
- **Date entered:** The date the requisition was first saved in mSupply.
- **Requisition date:** The date the requisition as given by the customer.
- **Status:** The status of the requisition (*sg*, *cn*, or *fn* nomally, web requisitions can also be *wf* or *wp*).
- **Type:** The type of requisition; *sh* for customer stock history, *im* for imprest or *response* for a response requisition.

\* **Authorisation:** If the Authorisation module is used, then we see option like *none*, *pending* or finally *authorised*.

- **Comment:** The comment entered on the requisition.

Buttons and fields in the window:

- **Show** drop down list: Use the **Show** drop down list to filter the requisitions by status.
- **Search** field: If the list of requisitions is too long to find a particular requisition you are interested in then you can type something in the **Search** field. If you type anything in the **Search** field, only requisitions with a customer name, requisition number, program or comment that contain what you typed will be displayed.
- **New XX** buttons: To create a new requisition of a particular type (see below), click on the appropriate  button - a new, blank window will open ready for you to enter the requisition.
- **Delete** button: To delete a requisition, click on it in the list to select it then click on the **Delete** button. You will be asked to confirm the deletion before it is carried out. **Please note:** You cannot delete a requisition if a customer invoice has been created from it - mSupply will tell you if this is the case. You can still delete the requisition but you must delete the customer invoice first.
- **Finalise** button: This button allows you to finalise multiple requisitions at once. Simply highlight a selection of requisitions in the list and click on the button. Only Confirmed status requisitions will be finalised; requisitions of any other status will be ignored. After finalisation has been carried out you will be told how many were successfully finalised and how many couldn't be updated because they weren't confirmed or because they were in use by someone else.

To edit a particular requisition, double-click on it in the list. A window will open, populated with the requisition's details; the window will be different depending on the type of requisition (see sections below).

With the passage of time, entries on the list will rapidly grow in number, and so mSupply allows you to apply a filter selecting exactly what will be displayed. The default display is for *Suggested*, as these are most likely the ones you will be processing; other options include *All*, *Confirmed*, *Web entries to be processed* - this covers histories submitted via the web customer interface - and *Entered today*

## New customer requisition

While [viewing existing requisitions](#), click the **New customer requisition** button to create a new one. This will open a new 'manual' customer requisition, which is the most basic type. See an example [here](#):

When you click the new *New customer requisition* button you may be presented with a choice of whether to process a **Program** order or a **General** order. You will only get this choice if your mSupply system has been configured to use [4.05. Programs](#). The rest of this page will discuss General requisitions, which is what you will experience when you choose to process a **General** order.



mSupply will present a requisition window in which you will need to choose your *customer*. You select a customer in the usual way. Below a customer has been chosen.



To add items that the customer has ordered, you can either manually add one item at a time or you can add a list of items from the master list.



When a single or multiple master list are chosen, the requisition is populated by the items that is part of the chosen master list.



- Enter/update the customer *Name* in the same way as a customer stock history (i.e. enter the first key characters and hit the **Tab** key to find matches), but note that changing the customer will invalidate any other data that you've already entered.
- If necessary, update the *Requisition date*, *Order received* and *Required date* - these will default to the current date.
- Select a *Category* if required - see [Requisition categories](#) for setting these up.
- Use either the **New line** button to manually add a single item, or **Add from master list** to add

items from a [master list](#).



When you click on the **Add from master list** button you will see a list of all the master lists assigned to your store **and** your customer (see the [4.04. Item master lists](#) page for details on master lists and how to assign them). Whichever master lists you choose to add items from, only the items that are both on that master list **and** visible in your *customer's* store will be added to the requisition. This will avoid the situation where you send a store an item that they didn't previously have visible to them!



If, for any of the lines, there is already a value in the *Customer current stock on hand* cell, then this is because the customer is actually another store in your mSupply system, mSupply already knows their current stock, and is displaying it here. While it is possible to process a new 'manual' customer requisition for such customers, mSupply is designed for these facilities to place an internal order to your store through mSupply. You can then 'respond' to these by processing a [Response \(internal\) requisitions](#). Please check to make sure that there isn't an existing response requisition waiting for you to process, rather than creating a new 'manual' customer requisition.

- Each line on the requisition will have four editable fields:
  - The focus will first go into the *Customer current stock on hand* cell, where you can enter the customer's current stock for that item.
  - Hitting the **Tab** key will move the focus into the *Customer requested* cell, where you can enter the value of what the customer has requested. This is not necessarily the quantity that you intend to supply; it is just what the customer has requested.
  - Hitting the **Tab** key will copy the quantity from the *Customer requested* cell to the *Supply this invoice* cell and the focus will move to the *Supply this invoice* cell. You can amend the *Supply this invoice* value if necessary and, optionally, hit the **Tab** key to enter a *Comment* (e.g. the reason why the amount supplied is less than requested).
- If necessary, use the **Delete line(s)** button to remove selected item lines.

If the requisition has a lot of item lines, you can filter them by typing into the *Filter items* field. If you do that, only the lines with items beginning with the letters you have typed in the field will be displayed. The text *X/Y* will be displayed after the search field to indicate that *X* lines of the total *Y* lines in the requisition are currently being displayed (2/8 in the following screenshot):

LI...	Item code	Item name	Unit	Our stock on hand	Customer current stock on hand	Customer requested	Approved quantity	Already issued	Remaining to supply	Supply this invoice	Comment	Authoriser comment
10	03_0452	Amoxicillin 500mg scored tab	Tablet	1192200	0	0	0	0	0	0		
11	05_0457	Amoxicillin Dry Po...mg/5ml Bot/100ml	Bottle	25830	0	0	0	0	0	0		
368	05_0458	Amoxicillin/Clavul...mg/5ml Bot100mL	Bottle	66359	0	0	0	0	0	0		
516	05_0459	Amoxicillin 250mg.../5ml 100 ml bottle	Bottle	0	0	0	0	0	0	0		
709	03_0461	Amoxicillin+Clavol...Acid 625mg tabs		9900	0	0	0	0	0	0		

Note that, while a filter is active, some of the other buttons are disabled e.g. you can't create an invoice or save the sort order unless all lines are visible. To make them active again, simply delete any text in the *Filter items* textbox (which will remove the filter).

Once you are satisfied, the *Create customer invoice* button should be clicked, and you will proceed to [creating the customer invoice](#). The *Supply this invoice* values will be used to populate the new customer invoice and the requisition status will change to cn (confirmed).

### Finalise Checkbox

Clicking on the "Finalise Checkbox" finalises the requisition form. After this no changes can be made and no additional customer invoices can be created from it. Finalised requisitions will no longer appear on reports that show "Remaining Quantities" as pending. Finalised requisitions are be considered as fully processed.

### Reference documents

The Reference documents tab on a requisition enables you to save documents and other files relating to the requisition. The tab looks like this:

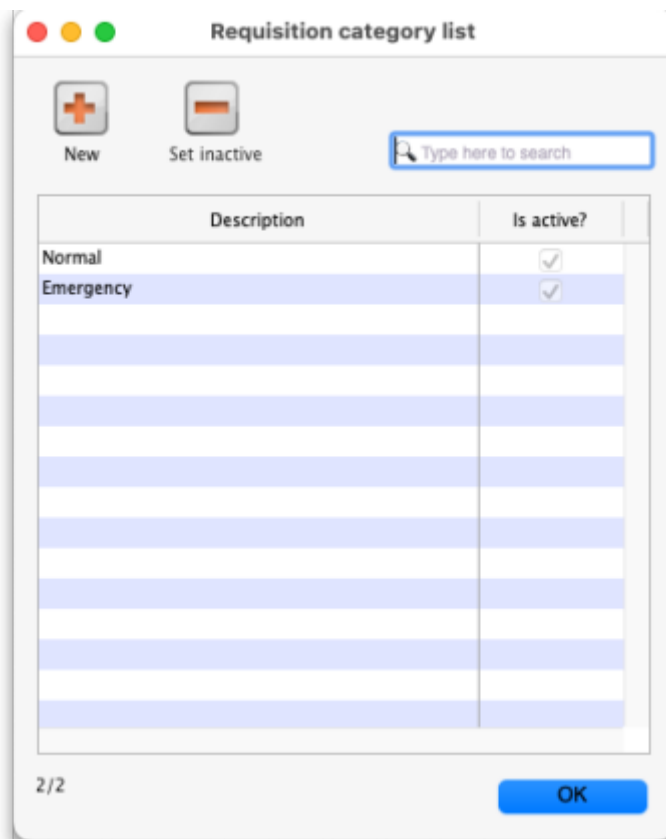
The screenshot shows the 'Edit requisition...' window. At the top, there are tabs for 'Data entry', 'Invoices created', 'Log', and 'Reference documents'. Below the tabs are three buttons: 'Upload document', 'Delete document', and 'Download document'. A table with the following columns is visible: 'File name', 'Created by', 'Created on', 'Saved on', and 'Version no'. The table is currently empty. At the bottom of the window, there are three buttons: 'Cancel', 'OK & Next', and 'OK'.

The table shows you all the files currently uploaded to this requisition.

- **Upload document button:** Click this to upload a document of the requisition. This will open a window enabling you to search for and select the file on your computer. After you've selected it, click on the **Open** button to upload it. If you upload a file with the same name as one already uploaded, mSupply will upload it as a new version of the already uploaded file.
- **Delete document button:** Select a file in the table by clicking on it and click this button to remove it from the requisition.
- **Download document button:** When you click on this button you are presented with two options:
  - **Download:** this will download the file to a location you select on your computer.
  - **Download and open:** this will download the file to a location you select on your computer and then attempt to open it using the default application on your computer for that file type. If there is no application associated with the file type on your computer then mSupply will tell you that the file could not be opened.

## Requisition categories

You can assign requisitions to a category for reporting. To setup the categories that users can select from, choose *Special > Requisition categories* from the menus. This window will open:



This window shows a list of all the requisition categories currently setup. The ones with a tick in the *Is active* column are the ones that can be selected on a requisition. If there is a long list then you can type in the *Type here to search* field to show only categories that contain what you type.

To add a new category, click on the **New** button. This window opens:



Enter a **Description**, click the **OK** button and the new category is added to the list.

To edit a category, double-click on it in the list and the same window as creating a new one will open but populated with the selected category's settings. Edit the category's name or the active status and click the **OK** button to save your changes.

You can quickly set a category as inactive (which means that it will no longer appear in the drop down list for selection on a requisition) by selecting it in the list and clicking on the **Set inactive** button.

## Requisition status

Summarising from above, the status of the requisition has the following meanings:

- Status = sg (suggested): No customer invoices have been created yet
- Status = cn (confirmed): At least one customer invoice has been created from the requisition
- Status = fn (finalised): No changes can be made to the requisition and no additional customer invoices can be created from it. It will no longer appear on reports that show "Remaining Quantities" as pending. Finalised requisitions are be considered as fully processed.

## Requisition type

There are a number of different types of requisition:

Type = im (Imprest), created through a Type = sh (Stock History), created through a Type = response (Requisition), created automatically from an internal order from a customer's mSupply store or manually through a

## New customer imprest

A typical use case of imprest is for a hospital pharmacy that has to stock it's ward or departments with items and stock on a weekly basis. Here the master list items will have the order quantities specified and the hospital pharmacy will aim to top of the ward or department with stock when the levels are low. [Click here for further guidance](#)

## Customer stock history method

A Customer stock history requisition uses the customer's history of stock on hand to calculate how much stock should be sent to the customer.

The Stock history method is particularly useful for customers that:

- Are not using mSupply to manage their store
- Are able to report stock on hand for each item
- Do not receive stock from suppliers other than your store

## Theory

The theory behind the stock history method (sometimes referred to as the Historical Logistics Method) is based on the assumption that future customer usage will be similar to historic usage.

We can calculate the customer's average usage over time if we know their stock levels at two points in time, and what stock they received from us in that intervening period. We assume that this average usage rate will continue over the coming supply period.



The Customer stock history is one of the few areas of mSupply that still works in days rather than months. This is mainly because it is a suitable replacement for the [Imprest method](#), where the order cycle is normally just a matter of days.

There are three more variables that need to be estimated:

- The number of days in the coming supply period
- The lead time required to supply them. That is, the time lag between the customer doing a stocktake in order to trigger re-supply, and receipt of the stock. In a hospital setting, you hope this is no more than 1!
- The number of days's worth of buffer stock they need

With this data, the calculation is like this:

- A = Stock on hand on date1
- B = Amount supplied to customer between date1 and date2
- C = Stock on hand on date2
- D = Quantity used in period between date1 and date2 =  $A+B-C$
- E = number of days between date1 and date2
- F = Usage rate =  $D/E$
- G = Number of days in coming supply period
- H = Number of days of buffer stock desired
- I = Lead time (days) between date2 and delivery of stock
- J = Amount to supply =  $F*(G+H+I)-C$

Using the stock history method:

- A and C are reported by the customer on date1 and date2 respectively
- B is calculated by mSupply based on mSupply records
- G, H and I are entered by the user
- D, E, F and J are calculated by mSupply

mSupply uses stock issued by the supplying store to arrive at the parameter B.



**Obviously, if the customer has received goods from other sources during the calculation period, B will be a lower figure than reality. This will result in D, F and J being calculated as less than reality!**

## First stocktake record

In order to calculate the usage rate, mSupply requires stock on hand figures of the items recorded on an earlier date (date1) = A, above. This becomes the *initial stock history record*.

If you have access to this earlier stock record for your customer, you can create this *initial stock history record* prior to processing their regular order. To create such a record, follow the procedure described below for [New customer stock history](#), with the following changes:

1. Enter the correct **Stocktake date**. That is, the date when the customer undertook the stocktake. If you don't know the exact date, estimate it, accepting that there may be some error in resulting calculations. You will see this alert. Just click **No** (or press **Enter**):



2. Ignore any figures that appear in the table, except for the **Customer current stock on hand** column. In this column, enter your customer's stock figures as reported on the **Stocktake date** entered above.
3. Click the **Confirm** checkbox.
4. Close the window using the **OK** button.



If you don't have this earlier stock record for your customer, you can just proceed to create a New customer stock history requisition, ensuring that you do enter the *Customer current stock on hand* values. These values will then be used as the *initial stock history record* when you enter the next customer requisition as a **New customer stock history**.

## Regular use

Once your customer's [first stocktake record](#) has been entered, and a period of time has passed with some customer stock usage, re-supply can be generated on the basis of this usage.

A re-supply using the stock history method is normally initiated by a customer stocktake. If your customer is set up with [mSupply customer web interface](#), then this process can be initiated by the customer directly, and then completed in the supplying store as described below.

If your customer has not used the mSupply customer web interface to report their stocktake, then their stock data needs to be entered manually to the supplying store as a [new customer stock history](#).



**Enter new customer stock history...**

Name:  wregst

Order Received:

Stocktake date:

Days to supply:

Their ref:

Comment:

Days between stocktakes: 9

Previous stock take date: 14/07/2025

Color:

ID: 4726

Entry date: 23/07/2025

Status: nw

Type: sh

Entered by: mSupply Support

Store: HQ Store

Previous StockTake ID: 4679

Line...	Item code	Item name	Unit	Our stock on hand	Their previous stock on hand	They received from us	Customer previous balance	Customer received stock	Customer current stock on hand	Their usage	Their daily usage	Our suggested quantity	Customer requested	Actual quantity given	Customer quantity used
0	10_9899	HIV Abacavir/La...0mg/300mg tabs		0	0	0	0	0	0	0	0	0	0	0	0
1	10_7887	HIV Abacavir/La...g dispersible tabs	Tablet	0	0	0	0	0	0	0	0	0	0	0	0
2	03_0050	Acetazolamide 250mg tab	Tablet	0	0	0	0	0	0	0	0	0	0	0	0
3	03_0063	Asperin/Glycine100mg/45Mg tabs	Tablet	80130	0	0	0	0	8900	-8900	-988.89	0	0	0	-89
4	03_0062	Acetylsalicylic Acid 300mg tabs	Tablet	1144900	0	0	0	0	53500	-53500	-5944.44	0	0	0	-535
5	03_0070	Acyclovir 200mg tabs	Tablet	113120	0	0	0	0	14880	-14880	-1653.33	0	0	0	-148
6	03_0072	Aciclovir (Acyclovir) 250mg vial	Vial	1100	0	0	0	0	250	-250	-27.78	0	0	0	-2
7	06_0078	Acyclovir 3% Tube (5g)	Tube	0	0	0	0	0	0	0	0	0	0	0	0
8	04_0084	Epinephrine (Adr...g/1ml Amp 1ml)	A...le	10110	0	0	0	0	400	-400	-44.44	0	0	0	-4
9	14_2000	Airway Guedels Autoclavable Size 1	Each	64	0	0	0	0	0	0	0	0	0	0	0
10	14_2030	Airway Guedels Autoclavable Size 3	Each	726	0	0	0	0	0	0	0	0	0	0	0
11	03_0200	Albendazole scored 400mg tabs	Tablet	1081	0	0	0	0	0	0	0	0	0	0	0
12	70_1105	CSL Bovine Albumin 22% 10ml	Vial	2	0	0	0	0	0	0	0	0	0	0	0
13	03_0220	Allopurinol 100mg tabs	Tablet	185900	0	0	0	0	28000	-28000	-3111.11	0	0	0	-280
14	03_0280	Aluminium Hydroxide 200mg tabs	Tablet	0	0	0	0	0	17200	-17200	-1911.11	0	0	0	-172
15	14_8033	Amalgam	Each	300	0	0	0	0	0	0	0	0	0	0	0

Confirm

Hide internal columns

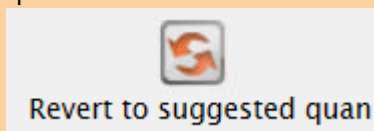
The contents of the columns are:

- **Line** Sequential numbering of the lines.
- **Item code, Item name, Unit:** Item details
- **Our stock on hand:** mSupply's record of the stock on hand in 'Our' (this) store.
- **Their Previous Stock on hand** mSupply's record of the customer's stock hand on the previous Customer stock history requisition. If you see zero here for all items, then check that you did actually carry out the [First stocktake record](#) for this customer.
- **They received from us:** mSupply's record of what was sent by us to the customer since the date of the previous Customer stock history requisition.
- **Customer Previous balance** The customer's report of their stock balance *before* they received the stock that we sent them from their previous order.
- **Customer Received stock** The customer's report of the stock that they have received between orders.
- **Customer Current Stock on hand** The customer's report of the 'current' stock on hand, at the time of placing their order.
- **Their usage** The customer's usage over the period between the date of the **Customer Previous balance** and the date of the **Customer Current Stock on hand** based only on their SoH reporting and mSupply's record of what was sent to them: **Their Previous Stock on hand** + **They received from us** - **Customer Current Stock on hand**. If the usage is negative then we know that there is some missing data.
- **Their Daily Usage** This is the **Customer quantity used** (column further to the right) divided by the number of days between the date of the **Customer Previous balance** and the date of the **Customer Current Stock on hand**
- **Our suggested quantity** mSupply's suggestion of the amount to issue *based on the customer's provided numbers*.
- **Customer requested** Whatever quantities the customer has requested. Enter this from the customer's paperwork.

- **Actual quantity given** mSupply's suggestion of the amount to issue *based on the customer's provided numbers* and the **Days to supply** This value can be overwritten by you, and is the value that will be transferred to the Customer Invoice when you are ready.
- **Customer quantity used** The customer's usage over the period between the date of the **Customer Previous balance** and the date of the **Customer Current Stock on hand** *based on the customer's supplied numbers*: **Customer Previous balance + Customer received stock - Customer Current Stock on hand**. This calculation allows for factors that would cause errors in the strict customer stock history method, e.g.
  - The customer may have mis-reported their previous balance.
  - The customer may have received stock from another source, resulting in **Customer received stock** being greater than **They received from us**.
- **Comment** Space for a comment

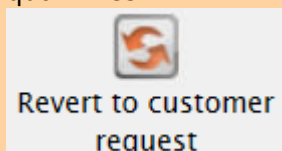
Initially, the **Actual quantity given** figures will be calculated by the customer provided values for **Customer Previous balance** and **Customer Received stock**; the **Their Previous Stock on hand** and **They received from us** values will be ignored. However, you can choose to use to revert to the mSupply suggested quantities by:

- Selecting all lines to be reverted
- Clicking on the Revert to suggested quan button.the recorded in mSupply when calculating the suggested quantities.

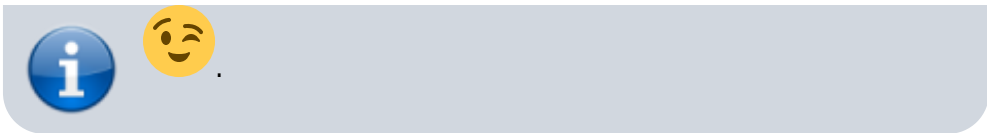


You can choose to use to revert to the customer requested quantities by:

- Selecting all lines to be reverted
- Clicking on the Revert to suggested quan button.the recorded in mSupply when calculating the suggested quantities.

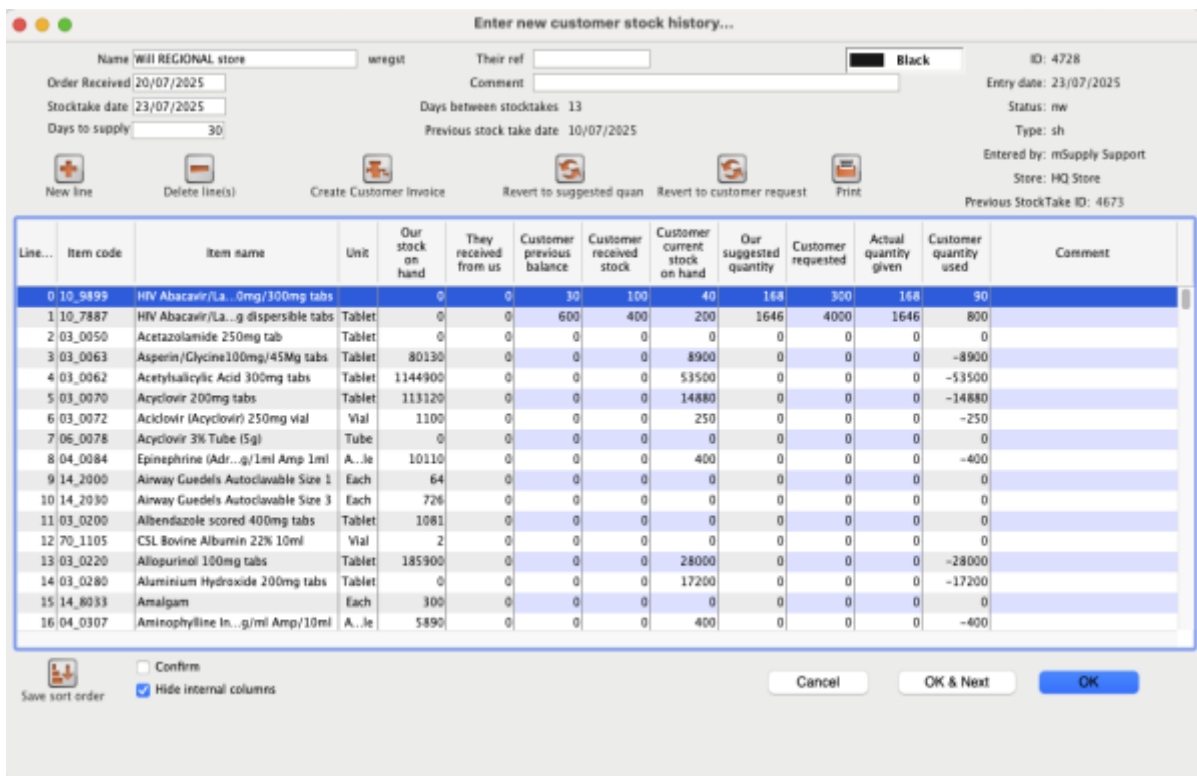


If the customer is a store within the mSupply system then mSupply will populate **Customer Current Stock on hand** with mSupply's record of the customer's Stock on Hand. You can then compare what the customer has recorded in their copy of mSupply's with what the customer is now telling you



### The Hide Internal Column Checkbox

The *Hide internal column* when clicked will simplify the window by displaying less columns.



The **Our SOH** column is the stock on hand in our own store, while figures in all subsequent columns are the customer's data.

The first entry to be made is in the **Days to supply** field, where the appropriate figure should be entered.

Be careful, **Days to supply** is *not* just the order cycle. It needs to *include* provision for lead time, and buffer stock as well - refer [Calculate required stock quantity](#) for the theory. So, if:

- Order cycle = 60 days (~two months)
- Lead time = 30 days
- Buffer stock = 2 x Order cycle = 120 days

Then the **Days to supply** = 60 + 30 + 120 = **210 days**

Sounds like a lot? Don't worry, when calculating the suggested order quantity, mSupply will deduct from this the



number of day's worth of stock that your customer already has in stock.

You will see in the example above that

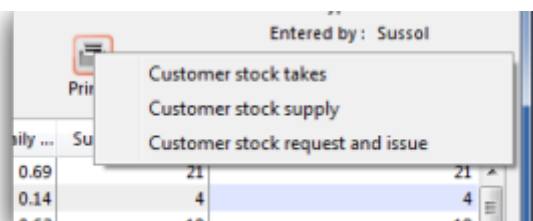
- 13 days have passed since the last stocktake
- **Days to supply** has been set to 30

As figures are entered, mSupply re-calculates **Our suggested quantity**. Once all the figures have been entered, **Our suggested quantity** should be compared with **Customer requested** and the **Actual quantity given** column should be updated accordingly. This is a good place to take into account pack sizes, ensuring that actual quantities match exact multiples of the pack size.

Once you are satisfied, the **Confirm** check box (bottom left corner) should be checked, the **Create customer invoice** button should be clicked, and you will proceed to [creating the customer invoice](#).

## Printing forms

Clicking the **Print** button provides several options for printing forms:



1. **Customer stock takes:** This form you can give to the customer (for example, if they are a ward in a hospital that has mSupply running in its pharmacy store), and they can fill out the quantities they have on hand, and then values are entered into mSupply.
2. **Customer stock supply:** This form provides information to give to the customer about the quantity they will be supplied.
3. **Customer stock request and issue:** This form provides information for the customer comparing what was requested with what was actually supplied.

The second two reports are for use after you have entered quantities to be supplied into the customer stock history window.

## Imprest method

The Imprest method is probably the most commonly understood and used method of stock control, and has been used for many years (centuries?).



As can be seen by the discussion below, the Imprest method is a simplification of the



Stock History method discussed above. We argue that the Stock History method is superior to the Imprest method because it dynamically calculates a number of values based on live customer consumption data, rather than relying on some historic calculation that is likely out of date. It is quite understandable why the Imprest method is the standard approach in hospitals - because it was developed before the computer age, and its hard to change old habits. However, now that you have mSupply ready to do the number crunching, we suggest that you seriously consider using the Stock History

method instead of the Imprest method...



With the Imprest method, the quantity to be ordered is the quantity necessary to restore the stock on hand to a pre-agreed fixed quantity. This imprest stocktake must be carried out on a regular fixed frequency (daily, weekly, fortnightly, monthly, whatever.) This pre-agreed fixed quantity is arrived at on the basis of a number of simplifications to the stock history method:

- ~~A = Stock on hand on date1~~
- ~~B = Amount supplied to customer between date1 and date2~~
- C = Stock on hand on date2 **THE ONLY INFORMATION COLLECTED**
- ~~D = Quantity used in period between date1 and date2.~~
- ~~E = number of days between date1 and date2~~
- F = Usage rate **PRE-DETERMINED AND FIXED**
- G = Number of days in coming supply period **PRE-DETERMINED AND FIXED**
- H = Number of buffer stock days desired **PRE-DETERMINED AND FIXED**
- I = Lead time (days) between date2 and delivery of stock = 0

The **Imprest Quantity** =  $F*(G+H+I)$

- J = Amount to supply = **Imprest Quantity** - C

If stocktakes are not taken at the pre-determined frequency, and particularly if they are missed, the system will fail. It is a fairly rigid system, in that once set, F, G and H must remain constant. It is suitable for supplying wards in a hospital setting, where operations are generally more rigidly controlled.

## Using the imprest system

The *imprest system* operates in this way:

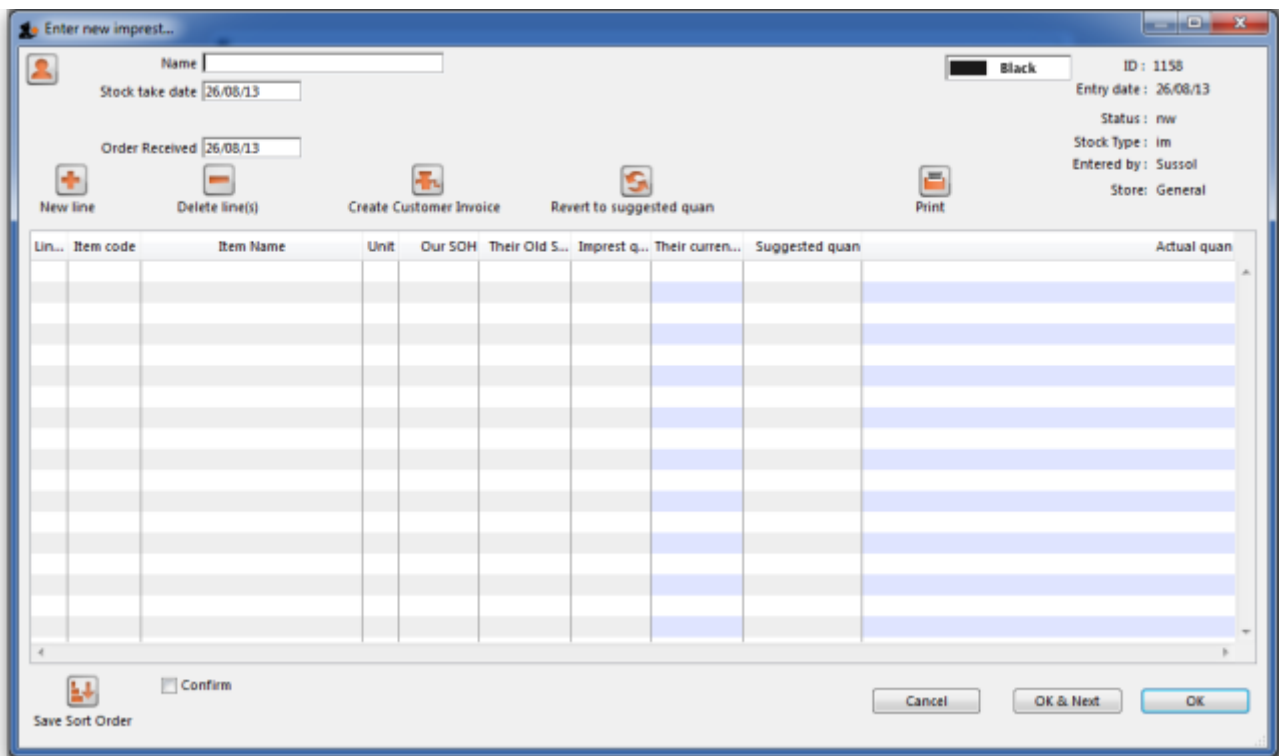
- The stock of a particular item which a customer (usually a clinic, ward or department) should hold is agreed. This is the **Imprest quantity**.
- A stocktake is carried out at the facility, giving us a **Stock on hand**.
- The amount to be ordered by the facility is calculated as:

**Order quantity = Imprest quantity - Stock on hand**

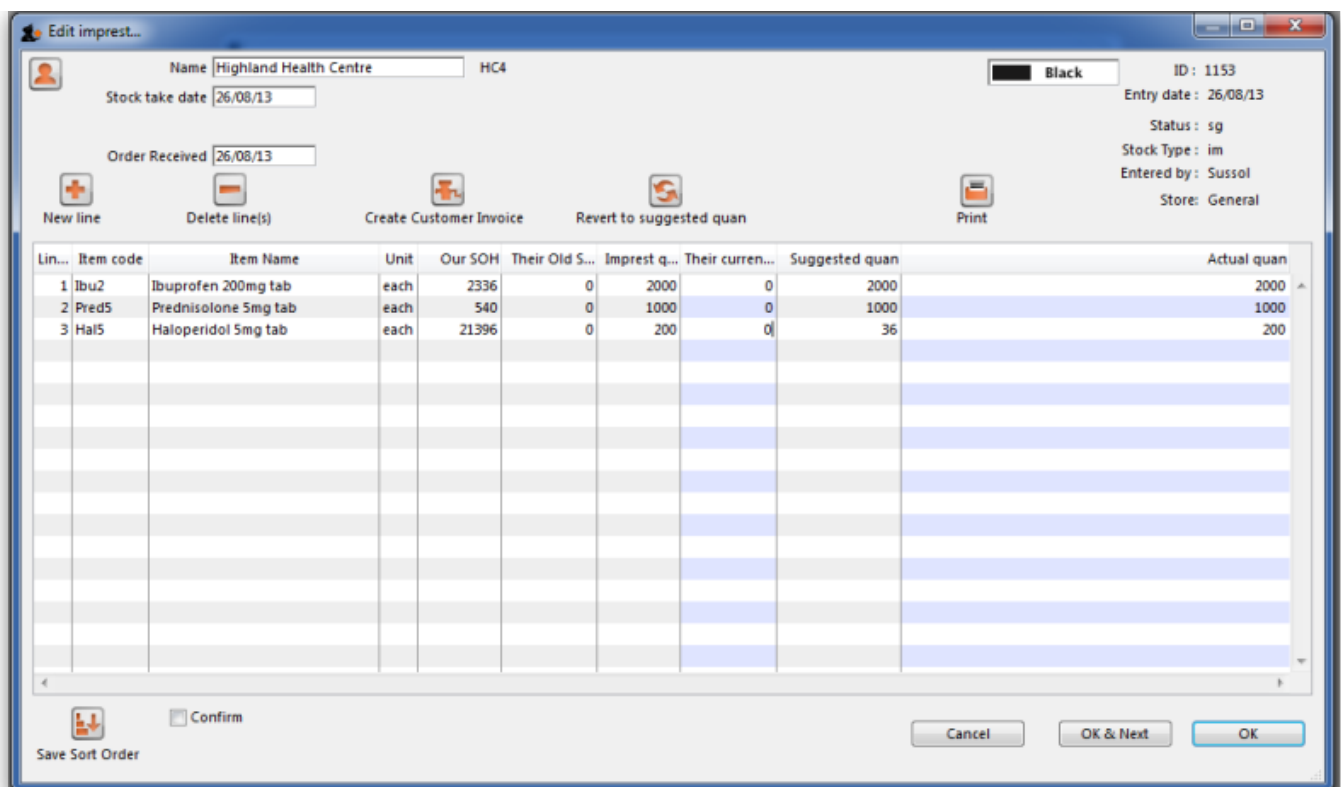
For example, take the case of a rural clinic which receives a monthly order from a central store:



If you are working with a customer for whom no imprest list has been defined, clicking on the *New customer imprest* will display the *Enter new imprest* window, where appropriate entries are made.



Continuing to use Highland Health Centre as our example (for whom we have created an imprest list), double clicking on that entry displays this new window on which the imprest list appears:



You will note that there are no entries in the *Their current stock* column, and the figures supplied by the customer should be entered; click on each line, and then edit the zero appearing in that column

with the supplied figures.

Old S...	Imprest q..	Their curren...	Sugg
0	2000	730	
0	1000	380	
0	200	164	

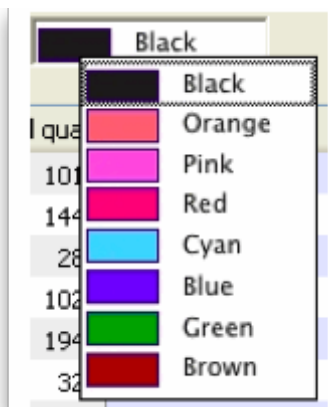


There is an important exception here: if the name you entered in the Name textbox is actually **another store** in mSupply then the *Their current stock* column will be automatically filled in with the stock in the store. Very useful time saving feature!

Simultaneously, mSupply completes the next two columns, *Suggested Quantity*, and *Actual Quantity*. The *Actual Quantity* entries may be edited to reflect, for example, pack sizes, to ensure that actual quantities match exact multiples of the pack size. After editing, the window may appear like this:

Lin...	Item code	Item Name	Unit	Our SOH	Their Old S...	Imprest quantity	Their current SOH	Suggested quan	Actual quan
1	Ibu2	Ibuprofen 200mg tab	each	2336	0	2000	730	1270	1500
2	Pred5	Prednisolone 5mg tab	each	540	0	1000	380	620	1000
3	Hal5	Haloperidol 5mg tab	each	21396	0	200	164	36	100

Should you have any reason to identify one or more lines, this may be performed by highlighting the line(s), and changing the colour of the font. Black is the default, but other options may be selected from the drop-down list:



Selecting 5 or more lines brings up an alert requiring confirmation of your intention.

Once you are satisfied, the *Create customer invoice* button should be clicked, and you will proceed to [creating the customer invoice](#), which is the same for all requisition types.

## Response (internal) requisitions

These work in much the same way as a [New customer requisition](#), but with some notable differences:

- Most importantly, you don't need to create it! A response requisition will be automatically created in your (supplying) store as a result of an internal order created in another mSupply store where most of the data will have been entered already by them.
- The customer *Name* is already filled in and cannot be changed.
- The *Customer current stock on hand* and *Customer requested* columns are already filled in and cannot be changed i.e. only the *Supply this invoice* and *Comment* columns are editable.
- If necessary, you can still add and/or delete item lines manually.
- It is possible to generate multiple customer invoices from a single response requisition e.g. if not all of the requested stock is available at the time the requisition is entered, this allows for an initial customer invoice to be sent to partially fulfil the request and another to be sent at a later date when more stock becomes available.


The Response requisition is a more accurate way to track demand vs supply.

You can create a new manual customer requisition for a customer that is an mSupply store one. This is especially useful if the customer's mSupply system is not functioning.

## Creating the customer invoice

Regardless of the requisition type, when the *Create customer invoice* button has been clicked, and the following window appears:

N...	Li...	Location	Item Name	Quan	Pack Size	Batch	Exp date	Sell Price	Price exten
	1		Ibuprofen 200mg tab	1500	1	none		0.00	0.00
	2		Prednisolone 5mg tab	1000	1	none		0.00	0.00
	3		Haloperidol 5mg tab	100	1	none		0.00	0.00

 If the customer invoice has been generated from an original [internal order](#) in another store, the customer invoice window will have a red **Stock transfer** label.

Similarly, if the customer invoice has been generated from an original [internal requisition](#) in another store, the customer invoice window will have a red **Internal requisition** label.

All the entries appear as (red) placeholder lines. The operator needs to allocate stock to each of these placeholder lines before a pick list can be printed. The operator can either [manually allocate stock](#) or by using the [Grinder button](#).

## Manually allocate stock

The next step is to double click on each entry and allocate stock. In the example, the 1st item on the invoice, *Ibuprofen 200mg tablets*, is being processed; there are several batches in our store, some of which have reached their expiry; although line 4 indicates there are sufficient to meet this order in the store, you will note that only 106 tablets are available, so we select line 6.

Item: Ibuprofen 200mg tab  
Line: 6  
Quan: 1500 of 2500  
Pack: 1 each Bulk/Outer pack size: 0

Li..	Issue	Available	Tot in store	Pack	Hold	Batch	Expdate	Supplier	Location	Cost Price	Sell price	Status
2	0	600	600	1	<input type="checkbox"/>	IDIH0280	30/11/10	ida	TAB	0.01	0.01	
3	0	140	140	1	<input type="checkbox"/>	IDIH0280	30/11/10	ida	TAB	0.01	0.01	
4	0	106.0000	1596	1	<input type="checkbox"/>	IDIH0280	29/11/16	ida	TAB	0.01	0.01	
5	0	1000	1000	1	<input type="checkbox"/>	G366	31/12/16	invad	AAA	0.00	0.00	
6	0	2500	4000	1	<input type="checkbox"/>	DP8081	31/01/17	ida	AAA	0.01	0.01	

Total quantity issued: 2000  
Total quantity available: 4346

Clicking on *OK & Next* displays the next item on the invoice, *Prednisolone 5mg tablets*.

Item: Prednisolone 5mg tab  
Line: 1  
Quan: 1000 of 0  
Pack: 1 each Bulk/Outer pack size: 0

Li..	Issue	Available	Tot in store	Pack	Hold	Batch	Expdate	Supplier	Location	Cost Price	Sell price	Status
1	1000	0	0	1	<input type="checkbox"/>	none				0.00	0.00	
2	0	540	540	1	<input type="checkbox"/>	WE201	31/12/16	invad	AAA	0.00	0.00	

Total quantity issued: 1000  
Total quantity available: 540

Click *Redistribute all*, which is the normal procedure. There is only one batch available, but there is insufficient stock to meet the order, so mSupply® creates a placeholder line for the outstanding amount.



When the final item has been processed, clicking on *OK* will display the completed invoice.



## The Grinder button

If your store is organised well, particularly by use of location priorities, you can automatically allocate stock to all placeholder lines by use of the grinder icon at the bottom left. 



Make sure the *Hold* checkbox is not checked, and at this stage the invoice may be confirmed.

If the customer invoice is for another store (i.e. if it has a red **Stock transfer** label or red **Internal requisition** label), it must be **finalised** in order to transfer the goods to the other store:



- For a stock transfer, this will generate a supplier invoice in the other store - see [Transferring goods to another store](#)
- For an internal requisition, this will generate a goods received record in the other store - see [Receiving goods from another store](#)

## After creating a customer invoice

- The *Already issued* column will be updated to reflect any non-placeholder lines (i.e. those not coloured red in the customer invoice) in any customer invoices which have been generated from the requisition regardless of the customer invoice status (i.e. it doesn't have to be confirmed).
- The *Remaining to supply* column will be reduced by the amount already issued, and *Supply this invoice* will be updated accordingly:

**Edit requisition...**

Name: Cactus Hospital CAC      Their ref: 678      Black      ID: 2  
 Requisition date: 15/02/18      Comment:      Status: cn  
 Order Received: 15/02/18      Type: response  
 Entry date: 15/02/18  
 Entered by: Admin  
 Store: Central Medical

Buttons: New line, Add from master list, Delete line(s), Filter items (Filter by item name or code), Create customer invoice, Print

Buttons: Save Sort order,  Finalise, Cancel, OK & Next, OK

LI...	Item code	Item name	Unit	Our stock on hand	Customer current stock on hand	Customer requested	Already issued	Remaining to supply	Supply this invoice	Comment
1	030453	Amoxicillin 250mg tabs	Tab	2,257,600	265	200	150	50	50	partial supply
2	038423	Salbutamol scored 2mg tabs	Tab	17,000	469	300	300	0	0	
3	042744	Diazepam Injection 5mg/ml Amp/2ml	Am...	1,450	5	30	30	0	0	
4	850804	Oral Rehydration Solution Reso Ma...	Sac...	15,000	79	100	100	0	0	
5	030062	Acetylsalicylic Acid 300mg tabs	Tabl...	5,000	761	400	300	100	100	partial supply
6	201116	Bandage W.O.W. 15cm wide x 5m roll	Roll	4,332	184	200	200	0	0	
7	031661	Captopril scored 25mg tabs	Tabl...	47,500	77	200	200	0	0	
8	037020	Paracetamol 500mg tabs	Tabl...	81,000	980	500	500	0	0	

In the example above, a single customer invoice has been created to supply most of the requested stock, apart from two items. You can then create a second customer invoice to supply the outstanding amounts.

Details of the related customer invoices can be seen in the **Invoices created** tab:

**Edit requisition...**

Name: Cactus Hospital CAC      Their ref: 678      Black      ID: 2  
 Requisition date: 15/02/18      Comment:      Status: cn  
 Order Received: 15/02/18      Type: response  
 Entry date: 15/02/18  
 Entered by: Admin  
 Store: Central Medical

Buttons: New line, Add from master list, Delete line(s), Filter items (Filter by item name or code), Create customer invoice, Print

Buttons: Save Sort order,  Finalise, Cancel, OK & Next, OK

Tab: Invoices created

Invoice number	Invoice confirmed	Invoice status	Item code	Item Name	Number of packs	Pack Size	Total quantity	Batch	Expiry date
27	06/06/2018	cn	030062	Acetylsalicylic Acid 300mg tabs	0	1,000	300	c17878	30/04/2020
28		sg	030062	Acetylsalicylic Acid 300mg tabs	0	1,000	100	c17878	30/04/2020
27	06/06/2018	cn	030453	Amoxicillin 250mg tabs	0	1,000	150	82929	31/12/2020
28		sg	030453	Amoxicillin 250mg tabs	0	1,000	50	82929	31/12/2020
27	06/06/2018	cn	201116	Bandage W.O.W. 15cm wide x 5m roll	3	12	36		
27	06/06/2018	cn	201116	Bandage W.O.W. 15cm wide x 5m roll	13	12	164	D456486	30/04/2021
27	06/06/2018	cn	031661	Captopril scored 25mg tabs	0	500	200	C67562	30/07/2022
27	06/06/2018	cn	042744	Diazepam Injection 5mg/ml Amp/2ml	1	25	30	sdfj28	31/03/2020
27	06/06/2018	cn	850804	Oral Rehydration Solution Reso Mal 42g sachet for 1 litre/ CAR-100	1	100	100	654TD47	
27	06/06/2018	cn	037020	Paracetamol 500mg tabs	0	1,000	500	D56756	
27	06/06/2018	cn	038423	Salbutamol scored 2mg tabs	0	1,000	300	56D7678	31/03/2022

Buttons: Cancel, OK & Next, OK

Double-clicking on any of these lines will open the corresponding customer invoice.

## Danger of failing to re-supply in time



Obviously, regardless of the calculation method employed, if the supplying store fails to re-supply the customer within the supply period (G) then the customer will start eating into the buffer stock and is in danger of running out of stock!

Previous: [8.06. Box management](#) | | Next: [8.08. Customer budgets](#)

From:  
<https://docs.msupply.org.nz/> - **mSupply documentation wiki**

Permanent link:  
[https://docs.msupply.org.nz/issuing\\_goods:stock\\_control\\_methods?rev=1754128230](https://docs.msupply.org.nz/issuing_goods:stock_control_methods?rev=1754128230)

Last update: **2025/08/02 09:50**

