

4.01.03. Items - Misc(ellaneous) tab

Back to [Item Details window](#)

This window has settings for:

1. cautionary warnings used when dispensing medicines
2. accounts used when exporting transaction information
3. SMS (text) messaging
4. Price list

Item details...

Item name: AMOXYCILLIN 250mg TAB/CAP

Store: General

Warnings

Add Delete

Code	Warning text	Priority

Account codes for exporting

Expense account when buying: Cost of goods sold (3000)

Income account when selling: Income (1000)

Asset account for stock: Stock (2000)

SMS settings

SMS code: am250

SMS pack size: 1000

Price list

On price list: ☐

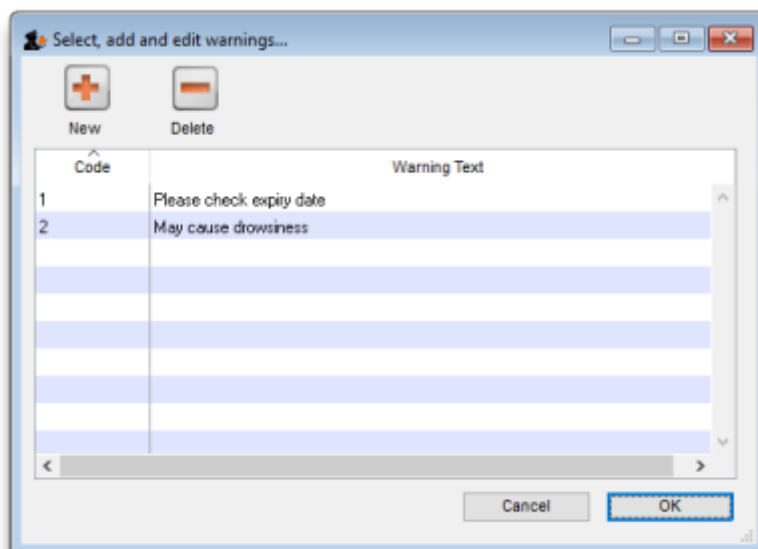
Indicative price: 0

Report pack: 0

Delete OK & Previous OK & Next Cancel OK

Warnings: Warnings which apply to this item are chosen from a standard list. This list is set up using the *Special > Warnings* menu.

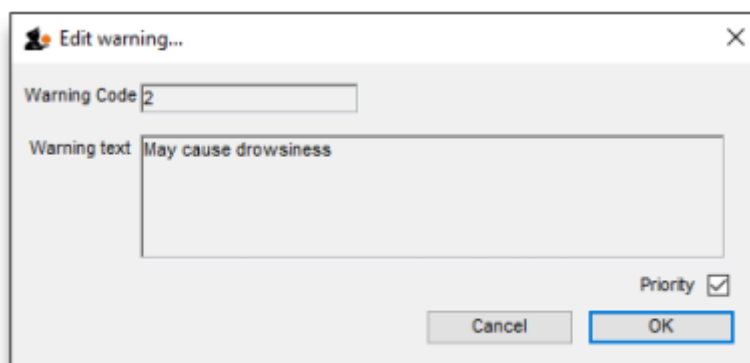
Use the **Add** button to add a warning for the item. This will open the below window where you can choose the warning from a list. Double click on the warning you want to use. You may also add new warnings to the list by clicking the **new** button.



To delete a warning, click on its line then click the **Delete** button.

When an item has more than one warning, the warning that has priority will be automatically printed on the label. You can add other warnings as part of the label directions if required.

To give a warning priority, double-click its line in the list and check the *Priority* box:



A warning's text may only be edited by choosing **Warnings** from the **Special** menu

Accounts: You can set the general ledger account to be used for exporting purchase and supply transactions involving this item here.

To set each account enter a portion of the account description or code and press the *Tab* key. You will be shown a standard choice list if more than one account matches what you typed.

SMS settings: These settings concern the item and SMS messages from mobile phones.

SMS code: This is the code that will be entered in an SMS to refer to the item. Keep the code short and unique! If you change this code you must notify all the users who send SMS messages to mSupply about the new code, otherwise they will not know how to refer to this item in their SMS messages. Because of this, you can only change this item after you 'unlock' the padlock next to it by

clicking on it. When you unlock the padlock you will be shown a warning that SMS users must be told about the new code.

SMS pack size: The pack size to use to convert the pack size quantities entered in an SMS message into item quantities. You must enter a value greater than or equal to 1 for this if you have entered an SMS code. Otherwise this field is ignored.

Price list

This section has two main uses:

1. It provides details used in reports (like the price list report - see the [13.11. Other reports](#) page for details).
2. It provides details used in the online catalogue (see the [19.07. Online catalogue](#) page for details).

On Price list: If this box is checked, this item will be included in the price list report and the online catalogue.

Catalogue price: The price for the item that will be used in the price list and the online catalogue.

Catalogue pack size: The pack size for the item that will be used in the price list and the online catalogue. The **Catalogue price** applies to a pack of this pack size.



The Catalogue pack size can differ from the **Preferred pack size** on the [Storage tab](#)

Update On Price List in bulk

If you need to change the **On Price List** check box for many items at once, custom code has been developed for this purpose, using the feature to [set the item flag in bulk](#). It is a technically challenging process that is easy to get wrong. Please contact the mSupply Foundation on support@mSupply.foundation to discuss this. Include a link to this heading [Update On Price List in](#)

[bulk](#) 😊.

The relevant details are:

- Method: `setOrClearOnPriceListByFlag`
- [mSupply Github issue 9773](#)
- Some [notes](#).

Previous: [4.01.02. Items - Storage tab](#) | | Next: [4.01.04. Items - Usage tab](#)

From:

<https://docs.msupply.org.nz/> - **mSupply documentation wiki**

Permanent link:

https://docs.msupply.org.nz/items:item_basics:tab_misc?rev=1723072518

Last update: **2024/08/07 23:15**

