

4.01.04. Stock tab

General

Misc

Usage

Stock

Ledger

Quotes

Backorders

Notes

Reconcile

Bill of materials

Purchase Orders

Order options

Dispensing

Reporting

Log

CST

Stores

Item details...

Item name

Amoxycillin Capsules, 500mg

Store

PMCH Main Store

Item code

103100

Show zero lines

Print

Split

Update sell prices

Show related invoices

Consolidate

Labels

Line	Available packs	Total packs	Hold	Pack size	Batch	Expiry date	Supplier	Manufacturer	Location	Cost Price	Sell Price	Status	Total...
1	10400	14800		1	140426	30/4/17	Invad		AS01	0.00	8.46		0
2	60000	60000		1	140613	30/6/17	BAD		AS01	0.00	8.46		0
3	12000	12000		1	140615	30/6/17	BAD		AS01	0.00	8.46		0
4	48000	48000		1	140610	30/6/17	BAD		AS01	0.00	8.46		0
5	12000	12000		1	140617	30/6/17				0.00	0.00		0

Stock

Minimum stock

0

Total stock value

0.00

Stock on hand

146,800

Average unit cost

0.00

Stock on order

0

Total Volume

0.00

Non stock items

Non stock item

☐

Default customer

Check ledger

Months Cover

Based on

0

months usage

Calculate

Exclude stock with expiry date less than

3

months

Generating an order for

0

months stock

will order a quantity of

Delete

OK & Previous

OK & Next

Cancel

OK

The “Stock” window shows the lines of stock for this item together with the stock on hand. mSupply® will calculate how many days this stock will last, based on your usage over a number of months - you can specify how many months.

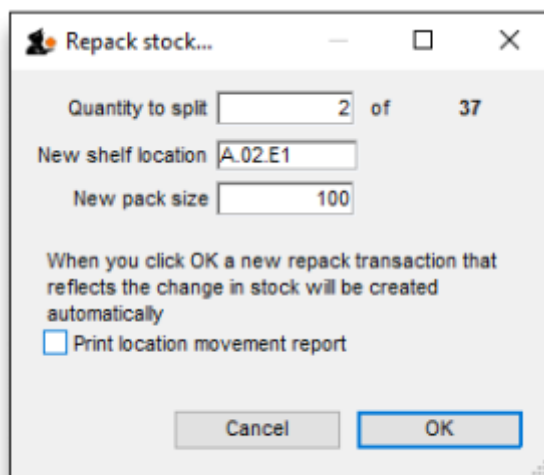


If you have turned on any of the custom stock fields in [store preferences](#) they will be displayed as columns (between the Supplier and Manufacturer columns) in the list of stock lines on this tab and the information you entered for these fields when the stock was received will be shown in the appropriate cells.

**Show zero lines:** This button will show all the lines that are still in your data file, but which have no stock on hand. If you can think of a use for this information, please let us know! When you click the button the button title changes to “hide zero lines”, which allows you to get back to the info you really wanted.

**Splitting:** There may be occasions when you need to split your stock- e.g. if you are moving it, say, from a store to a dispensary or clinic, or when you are repacking some stock; select the line to be split, and click on the Split icon to show a window allowing you to enter the quantity to be split, the new location, and - if applicable - the new pack size.

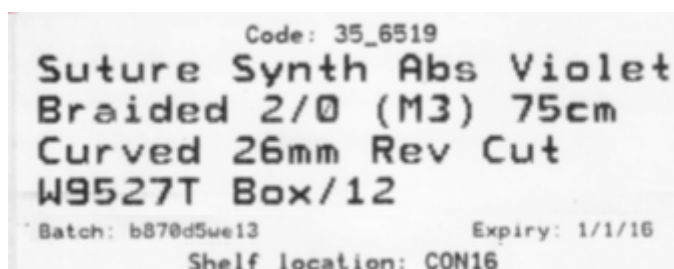
In the example shown, 2 packs of 1,000 Erythromycin tablets are being transferred to a new location, and the `outer' of 1,000 ( actually 10 x100 shrink wrapped together) is being opened to yield 10 individual packs of 100.



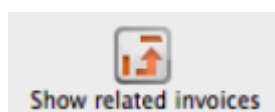
A dialog box titled "Repack stock..." with a close button (X) in the top right corner. It contains three input fields: "Quantity to split" with the value "2" and "of 37" to its right; "New shelf location" with the value "A.02.E1"; and "New pack size" with the value "100". Below these fields is a text block: "When you click OK a new repack transaction that reflects the change in stock will be created automatically". Underneath this text is a checkbox labeled "Print location movement report" which is currently unchecked. At the bottom are two buttons: "Cancel" and "OK".

**Update sell prices:** Clicking on this icon will update the selling prices of the highlighted line(s). mSupply® will use the figure entered in the **Default sell price of preferred packsize** field in the **General** tab, which must show the updated price before this will take effect. If you make use of the **Default margin** field, and you update this figure, then Supply® will calculate the updated sell price using it. Note that mSupply® looks first in the **Default sell price ...** field, and any figure entered there takes precedence.

**Labels:** Clicking this button will print shelf labels for the highlighted stock line(s). The shelf label includes the location, the item name and code, and the batch and expiry. Here's a (bad) example



## Show related invoices



Highlight a line then click on this button to display a list of transactions which used this particular line.

## Consolidate

You can consolidate (join 2 stock lines together) if they have

- The same batch #
- The same expiry
- The same pack size
- Are at the same location





If 2 stock lines you want to consolidate are at different locations, edit one of the stock lines to move it to the location of the other stock line, then consolidate. This reflects what you would have had to do physically anyhow!

1. Hold down the control key (command on Mac)
2. Click on the two lines you want to consolidate
3. Click **consolidate**
4. If the two stock lines are at different locations you'll be warned and asked if you want to continue.
5. You're shown this window

Consolidate batches

☒ Keep

☐ Merge

BatchB302WV  
Pack size50  
LocationBID  
Expiry date30/3/15  
Quantity40  
Available40

☐ Keep

☒ Merge

BatchB302WV  
Pack size50  
LocationINJ  
Expiry date30/3/15  
Quantity1  
Available1

Cancel

OK

6. Choose which stock line to keep.
7. Click **OK**

An example:

- Before:

Show zero lines    Print    Split    Update sell prices    Show related invoices    Consolidate													
Line	Available	Total	Pack	Hold	Batch	Expdate	Supplier	Manufac...	Location	Cost Price	Sell Price	Status	Total Volume
1	13550	14000	1	<input type="checkbox"/>	1004103	30/4/13	bouchm	YXKP	INJ	0.12	0.12		0
2	399	399	50	<input checked="" type="checkbox"/>	B302WV	30/3/15	bouchm	dochemie	BID	32.96	32.96		0
3	40	40	50	<input type="checkbox"/>	B302WV	30/3/15	bouchm	dochemie	BID	32.96	32.96		0
4	1	1	50	<input type="checkbox"/>	B302WV	30/3/15	invad		INJ	0.00	0.00		0

- After:

Show zero lines    Print    Split    Update sell prices    Show related invoices    Consolidate													
Line	Available	Total	Pack	Hold	Batch	Expdate	Supplier	Manufac...	Location	Cost Price	Sell Price	Status	Total Volume
1	13550	14000	1	<input type="checkbox"/>	1004103	30/4/13	bouchm	YXKP	INJ	0.12	0.12		0
2	399	399	50	<input checked="" type="checkbox"/>	B302WV	30/3/15	bouchm	dochemie	BID	32.96	32.96		0
3	41	41	50	<input type="checkbox"/>	B302WV	30/3/15	invad	dochemie	BID	32.96	0.00		0

## Other information on the stock details page

### Stock

Minimum stock: The minimum stock you wish to keep on hand. Note that you do not need to enter a quantity here for mSupply®'s ordering system to work. In fact, it is better in most cases to leave this number set to zero. This field should only be filled in if you absolutely must keep a minimum on hand. For example, if you stock naloxone for narcotic over dosage reduction, and even if you only use 1 vial every year, you have decided you need to keep five vials on hand, you would enter "5" as the minimum quantity for naloxone.

Stock on hand: The total stock of this item on hand.

Stock on order: The total quantity of stock of this item on order from suppliers

### Non-stock items

If this is a non-stock item, you can check this check box. If there is one, you can specify the default customer for the item, otherwise leave this box blank. For more on this topic see [Non-stock items](#)

### Months Cover

You can use this calculator to estimate the time left until the stock of this item runs out. The values which appear estimating the time it takes to use the stock on hand (and on order) are calculated from the average usage of the last few months. You can choose the number (from 1 to 24) of months used to calculate this in the drop down list.

You can also exclude stock that will expire soon. Enter a number of months and any stock that expires before your chosen time frame will be excluded from the calculation.

If you would like to know how much stock to order so that you have enough for the next few months, enter the number of months you would like stock for. After entering or changing any or all of these values, click **Calculate** to see the results.

## Editing a stock line or viewing more stock line details

To edit the cost price and selling price for an item line, double-click the line you wish to edit.

The **Item stock line details window** is displayed:

Item stock line details...

Item code AM01020    Item name AMOXICILLINE 500 MG GELULE

General    Ledger    Status    Reference documents    Log

Quantity according to stock

Total Quantity 22150    Available 21150

Cost price 35    Hold ☐    Volume per pack 0 m3

Sell price 45    Location A.01.02

Expiry date 01/07/2022    Pack size 1

Batch B092    Quan per Inner 0    Initial quantity 0

Supplier NPSP AGENCE D'ABIDJAN    Inners per Outer 0

Note

Custom stock fields

Cancel    OK

## Stock lines > General tab

This tab shows the details of a stock line. It also gives you total and available quantity of that stock line.

**Hold checkbox:** To hold a stock line, check the *Hold* check-box. Once a stock line is held, it cannot be issued. It will still appear in the available stock window, but held stock lines will have a check box in the hold column, and if a user attempts to issue from the stock line they will be informed that the stock line is on hold.



The *Hold: do not issue* option in the General options takes precedence, and if that option is checked, then no stock may be issued, regardless of batch.

## Stock lines > Ledger tab

This tab shows a list of transactions (supplier and customer invoices, inventory adjustments etc.) for the item being viewed. You can use this window to see a list of customers who have been supplied with this particular item:

Item stock line details...

Item code S1555370      Item name Albendazole, 400mg, tabs, chewable

General **Ledger** Status Reference documents

Quantity according to stock

Total Quantity 235800      Available 235700

Date	Invoice	Name	Type	In/Out	S...	Expiry	Batch	Quan	Pack	Cost	Sell	Exten
09/05/2017	112	Invent...tments	si	in	cn	28/02/2019	6MC130	2250	100	0	0	
14/06/2017	137	Invent...tments	si	in	cn	28/02/2019	6MC130	108	100	0	0	
	1712	34 Mil...ospital	ci	out	sg	28/02/2019	6MC130	1	100	0	0	

Item stock line ledger

Total Quantity 235800      Available 235700

Reconcile from start of year

Total Quantity 235800      Available 235700

Reconcile      Cancel      OK

The *In/Out* column tells you whether the transaction on that line brought stock in to, or took stock out of, mSupply.

### Stock lines > Status tab (vaccine vial monitoring)

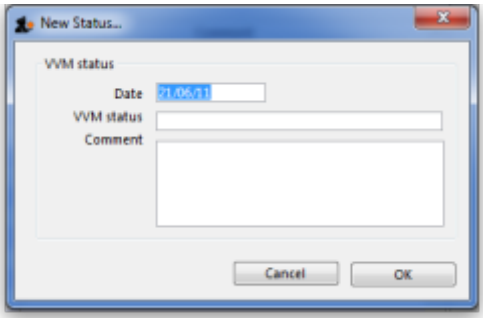
A window appears with 4 columns:

- Date
- VVM status
- Entered by
- Comment

There are two buttons:

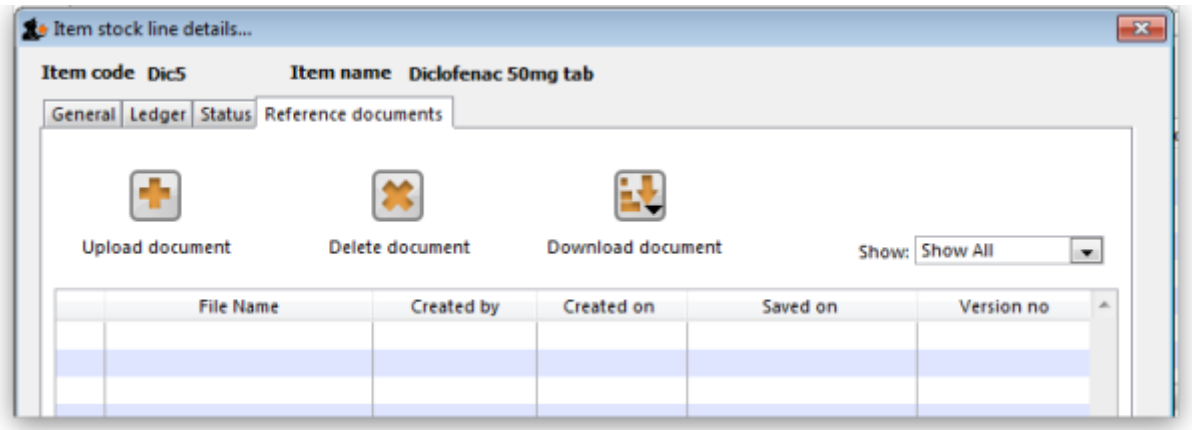
- New
- Delete.

This has been specifically designed to use the Vaccine Vial Monitoring (VVM) feature. All vaccines requiring cold storage bear a VVM label which registers cumulative heat exposure over time; the combined effects of heat and time cause the inner square of the label to darken gradually and irreversibly. A comprehensive description of VVM is available in [WHO's pdf document accessible](#). Stock lines of vaccines should have their status VVM labels regularly checked, and assigned to the relevant status; Clicking on the *New* button allows the details to be recorded.



Should a stock line of vaccines have the status 3 (or 4), the Hold checkbox under the **General** tab should be checked.

**Stock lines > Reference documents tab**



The standard Document Management window appears. See [Reference documents](#) for more information on the use of such documents.

From:

<https://docs.msupply.org.nz/> - mSupply documentation wiki

Permanent link:

[https://docs.msupply.org.nz/items:item\\_basics:tab\\_stock?rev=1578909294](https://docs.msupply.org.nz/items:item_basics:tab_stock?rev=1578909294)

Last update:

2020/01/13 09:54