

4.3. Item categories

Item categories are a great way of grouping your items. This enables you, for example, to report on specific groups of products by filtering by item category. This can be extremely helpful.

mSupply provides 4 different categories (called category 1, category 2, category 3 and VEN) for you to use. Category 2 and 3 are normal categories but 1 is a bit special - it's hierarchical and has 3 levels (level 1, 2 and 3. Level 1 is the top level, level 3 is the bottom). VEN refers to the WHO categories of Vital, Essential and Nonessential.



Be careful not to get mixed up between the levels of category 1 (1, 2, and 3) and the different categories (1, 2, 3 and VEN) themselves here!

Category 1 categories

[Selecting Show Item Categories](#) from the **Item** menu opens the window appearing below, showing all the category 1 categories in their 3 levels by default (Note that the 3 “None” categories are default categories and cannot be renamed or removed):



In the screenshot you can see that “6.Antiinfectives” is a top level (level 1) category 3 category. It has 3 level 2 child categories: “6.1 Antiinfectives, anthelmintics”, “6.2 Antiinfectives, antiamoebic/antigiardics” and “6.3 Antiinfectives, antibacterials”. And level 2 category “6.2 Antiinfectives, antiamoebic/antigiardics” has a single level 3 category “Antileprosy medicines”.

Clicking on any of the categories will show you which items are assigned to that category in the panel on the right hand side of the screenshot.

Adding category 1 categories

To add a category at level 1, 2 or 3, click on another category at the same level you want the new one to be, click on the *Add* button (or the *Add child* button if you want the new category to be a child of the category you selected) shown in the screenshot and the new level will appear at the bottom of the categories pane called “Click to edit” and already selected. Click on it once and type the category's name. When you're done click outside the category and that's it!

Editing category 1 categories

Renaming a category is simple. Click once on the category you want to rename to select it then click on it again to edit the name: the category will become a text box and you can type the new name. When you've finished editing the name, simply click outside the textbox (but inside the category pane) and the new name will be saved.

Changing the parent of a category is almost as simple. You simply click on the category once to select it then click on it again, drag it onto its new parent (or a sibling of the new parent) and let go of the mouse button. Two things to note here:

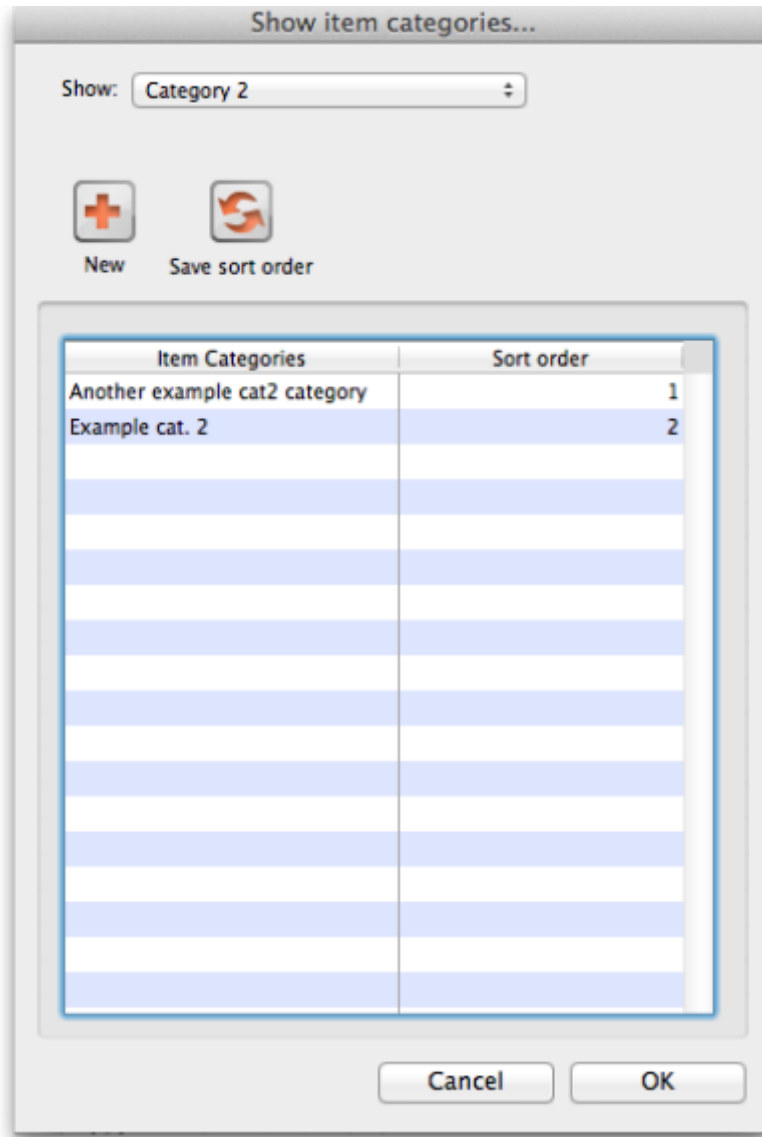
1. You can only move a category to a position at the same level. If it's a level 3 category then you can only drop it onto a level 2 category or another level 3 category. If you drag a level 3 category onto a level 1 category nothing will happen. For example: in the screenshot you could drag category "6.1 Antiinfectives, anthelmintics" onto category "1. Anaesthetics" or onto category "4.2 Antidotes, specific" and it would move (to become a child of category "1. Anaesthetics" or "4. Antidotes"). But if you dragged it onto category "6.2.3 Antileprosy medicines" it would not move (this is a level 3 category, 1 level below "6.1 Antiinfectives, anthelmintics" so the move is not allowed).
2. If you move a category which has any child categories, all the child categories will be moved too. For example: in the screenshot you could drag category "6.1 Antiinfectives, anthelmintics" onto category "4.2 Antidotes, specific" and it would move to become a child of category "4. Antidotes". It's child ("6.1.3 Antischistosomals...") would remain its child and become a grandchild of "4.2 Antidotes, specific".

Deleting category 1 categories

This is the simplest of all. Select the category you want to delete by clicking on it and then click on the *Delete* button. After confirming you want to delete the category it will be deleted. mSupply will not allow you to delete categories that have items assigned to them - it will warn you that you have to remove the items from the category first. See the Assigning items to categories section below for details on how to do this.

Category 2 and 3 categories

Category 2 and 3 categories are simpler - they are not hierarchical. To view the category 2 or 3 item categories select **Show Item Categories** from the **Item** menu and change the *Show* drop down list at the top of the window to "Category 2" or "Category 3" and the window will change to look like the screenshot below:



The window shows a list of the existing categories of this type.

Save sort order button: The sort order of the categories is the order they will appear in the list when you are assigning items to the categories (see the Assigning items to categories section below) or when you're selecting them in a filter e.g. for a report. You can drag the categories up and down the list to give them the order you want them to appear in. When you are happy with the order, click on the **Save sort order** button and the order will be saved.

New button: Clicking on this will take you to the edit category window shown below:



Simply type the name of the category shown in the *Item category* textbox and click on the *OK* button to create the new category

If you double click on a category in the list you will also be taken to the edit category window where you can edit the category's name, see which items have been assigned to the category, delete the category (click on the *Delete* button).

VEN Categories

mSupply allows you to categorise items according to the World Health Organisation categories of:

Vital - medicines are potentially lifesaving, have significant withdrawal side effects (making regular supply mandatory), or are crucial to providing basic health services.

Essential - medicines are effective against less severe but nevertheless significant forms of illness but are not absolutely vital to providing basic health care.

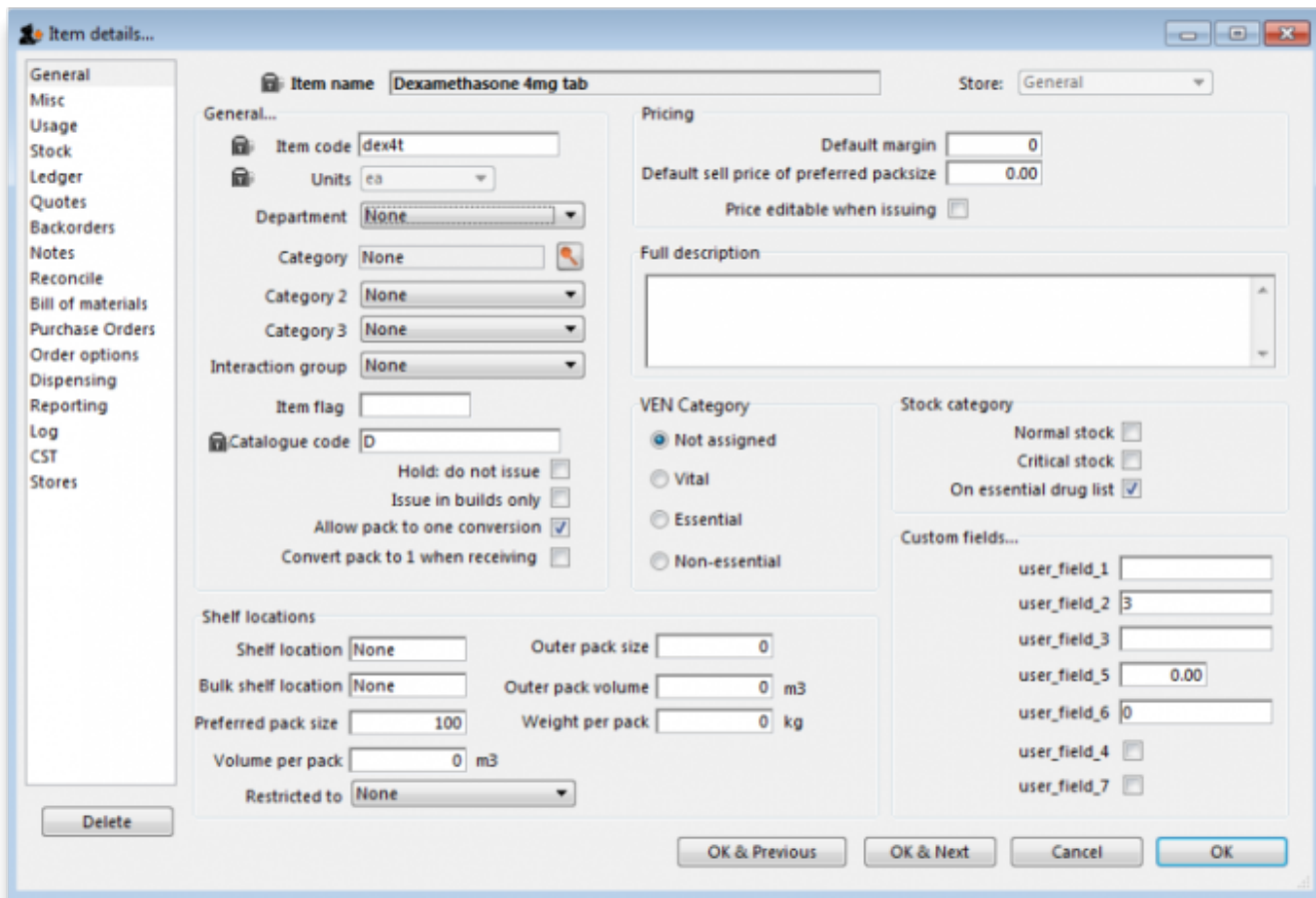
Necessary - this group of drugs is used for minor, or self- limiting illnesses, and those which have a comparatively high cost for additional therapeutic value. It includes drugs which are prescribed but which provide useful alternative therapy.



You can use these categories to make purchasing decisions using reports such as the [Suggest Order Quantities](#) report.

Assigning items to categories

Once you have set up the categories, all items can be assigned to their appropriate category. This is performed on the *Item details* window under the *General* tab (get here from File > Show items, click on the *Find* button and double click on the item you want to add to a category):



To assign the item to a category 2 or category 3 category, select the correct category from the *Category2* or *Category 3* drop down lists.

To assign the item to a category 1 category click on the magnifying glass next to the *Category* box. The following window will open:

- If the item is already assigned to a category then that category is highlighted in the list
- If you want to change the item's category, simply select the level 3 (bottom level) category you want to assign the item to, and click on the OK button
- If you want to *remove* the item from all category 1 categories, select the level 3 "None" category in the list.

You can assign an item to a category 1, 2 and 3 category at the same time.

Previous: [Adding items](#) Next: [Items - Master lists](#)

From: <https://docs.msupply.org.nz/> - **mSupply documentation wiki**

Permanent link: https://docs.msupply.org.nz/items:item_categories?rev=1564552556

Last update: **2019/07/31 05:55**

