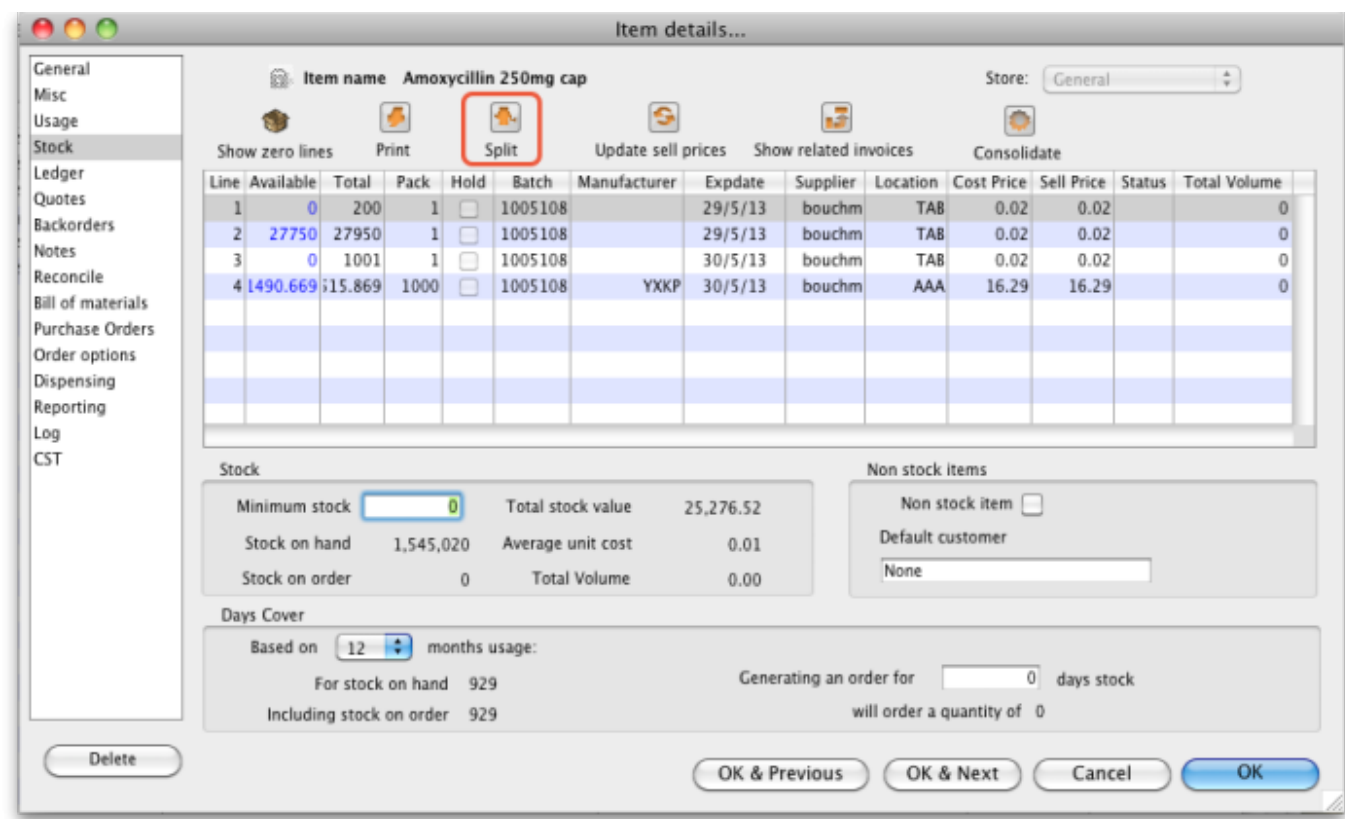


Splitting a batch

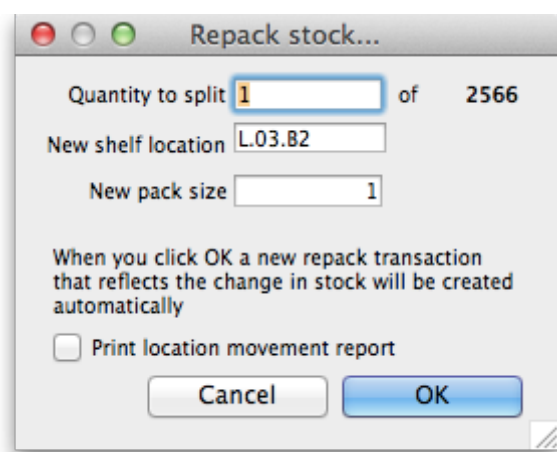
*

- From the **Item** menu choose **Show items** to find the item to be split
- Enter the start of the item name and click **Find**
- Once the **Item details** window is displayed, choose **Stock** from the side bar list.



Split a batch

- Click on the line you want to split, then click **Split**



- Enter:

- How many you want to move/split (if you're repacking the whole lot, then enter the total quantity)
- The new location (leave it alone if you're not changing the location)
- The new pack size.
- Click **OK**
- You can use the split command to perform these actions:
 - Change the location of a batch
 - Repack some of a batch
 - Change the pack size of a batch

Previous: [Show items with stock](#) Next: [Stocktakes](#)

From:

<https://docs.msupply.org.nz/> - mSupply documentation wiki

Permanent link:

https://docs.msupply.org.nz/items:splitting_a_stock_line?rev=1344067009

Last update: **2012/08/04 07:56**

