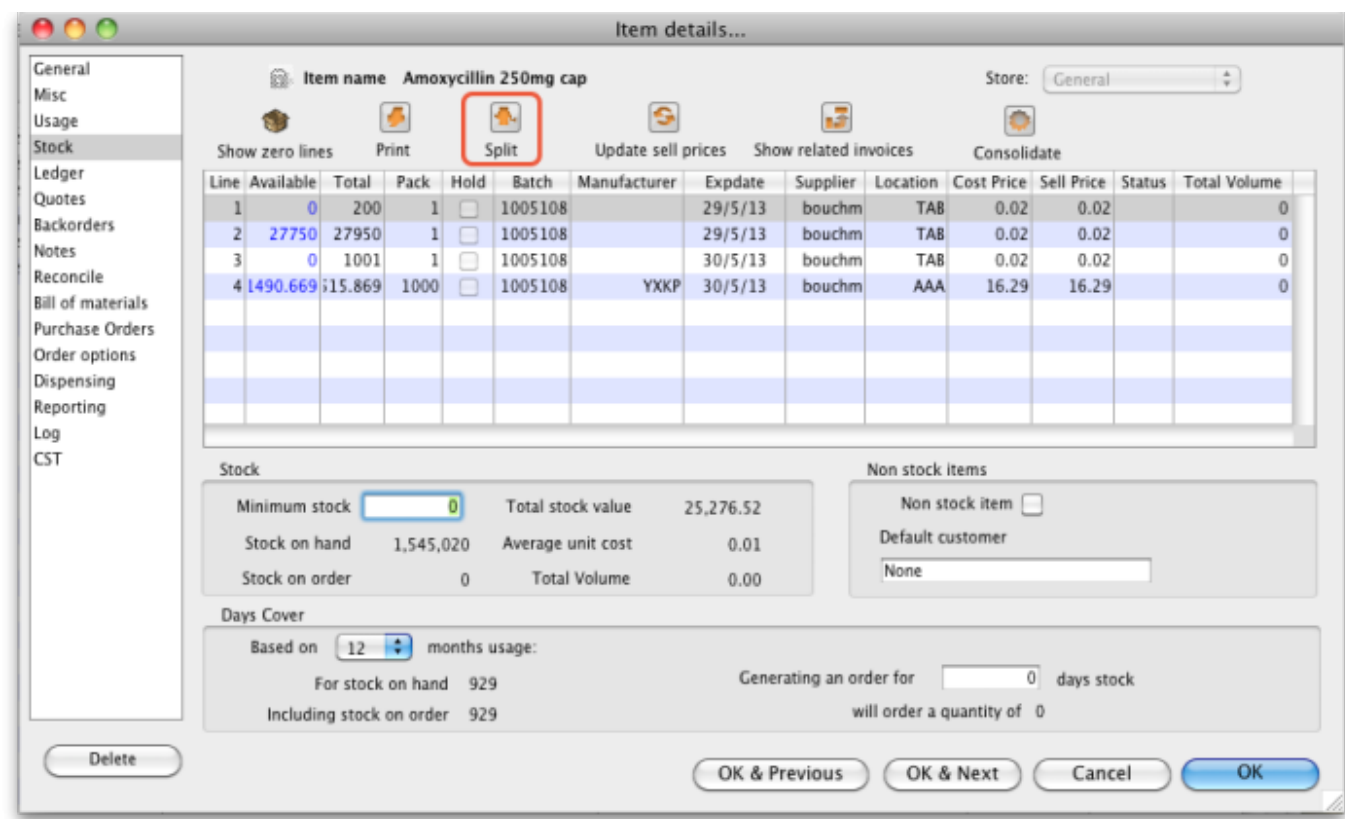


Splitting a batch

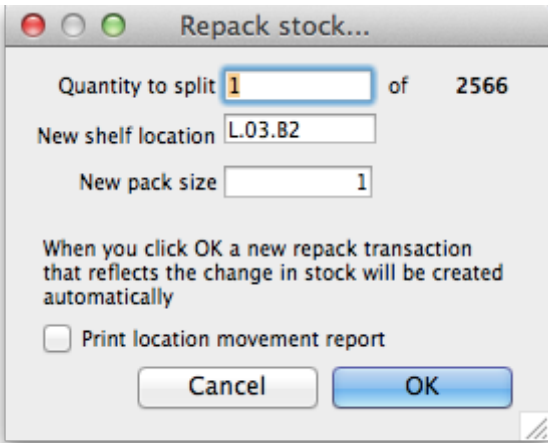
*

- From the **Item** menu choose **Show items** to find the item to be split
- Enter the start of the item name and click **Find**
- Once the **Item details** window is displayed, choose **Stock** from the side bar list.



Split a batch

- Click on the line you want to split, then click **Split**



- Enter:

- How many you want to move/split (if you're repacking the whole lot, then enter the total quantity)
 - The new location (leave it alone if you're not changing the location)
 - The new pack size.
 - Click **OK**
- You can use the split command to perform these actions:
 - Change the location of a batch
 - Repack some of a batch
 - Change the pack size of a batch

Produce a Movement report

- mSupply provides the feature of producing a 'Movement report' for stock that is split.
- Once you have entered the details of your split, simply click on the checkbox labelled 'Print Location Movement report' and click button **OK**.



- The following report is displayed.

National Medical Store
Kukum Highway Ranadi, Honiara, Solomon

Our ref: _____

Page 1 of 1

Item code 2011
Item name ACRIFLAVINE 0.2% IN SPIRIT 70% BOT/50ML

Original			
Location	Pack	Batch	Quantity
L.03.B2		S41/S42	

From this location

--->>

New			
Location	Pack	Batch	Quantity
M.01.A1		S41/S42	

To this location

Previous: [Show items with stock](#) Next: [Stocktakes](#)

From:
<https://docs.msupply.org.nz/> - mSupply documentation wiki

Permanent link:
https://docs.msupply.org.nz/items:splitting_a_stock_line?rev=1369207218

Last update: **2013/05/22 07:20**



