

## 15.10. Options (standard reasons)

You can create a list of options (or reasons) for the user to select from when they use perform certain actions in mSupply (in drop down lists etc.). Options are an alternative to the user typing free text, and can help standardise information being recorded in mSupply.

You can enter options for:

- **Requisition Line Variance:** Reasons for a variation between the suggested quantity and entered quantity in a requisition line.
- **Positive Inventory Adjustment:** Reasons for a positive adjustment between the snapshot quantity and entered quantity in a stocktake line (to help answer the question *why is there more stock than expected?*).
- **Negative Inventory Adjustment:** Reasons for a negative adjustment between the snapshot quantity and entered quantity in a stocktake line (to help answer the question *why is there less stock than expected?*).
- **New Cash Out Transaction:** Reasons for a cash out transaction.

### Creating options



In a sync system, Options must be added on the **central server** and will then sync to other sites.

1. Go to the **Admin** tab on the Navigator and click the **Preferences** button:



2. Click on the *Options* tab in the list on the left hand side to see this page:



3. Select the transaction type requiring options from the dropdown list at the top. When you do that, the table will show all the existing options for that type.

4. Click the **Add Option** button and this window will open:

A screenshot of a dialog box titled 'Options' for the transaction type 'Negative inventory adjustment'. The 'Option' field contains the text 'Expired'. The 'Active' checkbox is checked. There are 'Cancel' and 'OK' buttons at the bottom right. Red boxes highlight the 'Option' field and the 'OK' button.

5. Enter a name for the option in the **Option** field, then click on the **OK** button to save it.



**Once an option is saved, it *cannot* be deleted.** Check carefully before pressing OK! If you need to prevent an option being available for selection by users then make it inactive. This will mean old options can be displayed correctly in historical records but they are no longer available for use by users.

All options in use have the **Active** box ticked and will now appear for selection in the given transaction type.

If an option is no longer in use, find it in the list, double-click on it and uncheck the **Active** checkbox. This will remove it from the list of options available for a user to select.

This is what the list looks like with some active and some inactive options:

A screenshot of the 'Preferences...' dialog box. On the left is a sidebar with a list of categories: Reports, Names, Tender, Reminders, Patient Medication, Drug Interactions, Registration, Printing, OK and print, Logo, Dispensary mode, HIS, Log, Backup, Backup 2, Email, Server, Synchronise, Customization, Moneyworks, FrontlineSMS, eLMIS, LDAP, DHIS2, Stock, Custom fields, Barcode scanning, and Options (which is selected). The main area shows a table for the 'Negative inventory adjustment' transaction type. The table has two columns: 'Option' and 'Active'. The 'Option' column lists 'Expired', 'Damaged', and 'Lost'. The 'Active' column has checkboxes: 'Expired' is checked, 'Damaged' is checked, and 'Lost' is unchecked. A red box highlights the 'Active' column. There is an 'Add option' button with a plus icon in the top right. At the bottom are 'Cancel' and 'OK' buttons.

| Option  | Active                              |
|---------|-------------------------------------|
| Expired | <input checked="" type="checkbox"/> |
| Damaged | <input checked="" type="checkbox"/> |
| Lost    | <input type="checkbox"/>            |
|         |                                     |
|         |                                     |
|         |                                     |
|         |                                     |
|         |                                     |
|         |                                     |
|         |                                     |
|         |                                     |

## Using options

This section shows how options appear in each transaction type after they are created.

### Requisition line variance

This type appears when creating a [Requisition](#).

If there are any active options of this type, when a user enters a **User Requested Quantity** that is different from the **Calculated Quantity**, the list of active *Requisition line variance* options automatically appears in the **Reason** column and one must be selected:

The screenshot shows the 'Enter new requisition...' window. At the top, there are fields for Name (Central Medical Store), Reference, Order date (23/10/19), Comment, Max MOS (3.0), and Threshold MOS (0.0). Below these are buttons for 'New line', 'Add from master list', 'Delete line(s)', and 'Filter items'. The main table has columns: LI..., Item code, Item name, Unit, Our stock on hand, Average monthly consump..., Months of stock, Calculated quantity, User requested quantity, Reason, and Comment. Two lines are visible: Line 1 for Amoxicillin 500mg tab/cap and Line 2 for Chloroquine phos... 150mg (base) tab. Line 2 has a 'User requested quantity' of 2000, which is highlighted in red. A dropdown menu is open for the 'Reason' column of Line 2, showing the following options: 'Enter reason for variation;', 'Outbreak', and 'Replenishing expired stock'.

| LI... | Item code | Item name                            | Unit | Our stock on hand | Average monthly consump... | Months of stock | Calculated quantity | User requested quantity | Reason  | Comment |
|-------|-----------|--------------------------------------|------|-------------------|----------------------------|-----------------|---------------------|-------------------------|---|---------|
| 1     | ams500t   | Amoxicillin 500mg tab/cap            | ea   | 4000              | 0                          | 0               | 0                   | 5000                    | Replenishing expired stock  |         |
| 2     | chp150t   | Chloroquine phos... 150mg (base) tab | ea   | 500               | 0                          | 0               | 0                   | 2000                    | Enter reason for variation;<br>Outbreak<br>Replenishing expired stock |         |

### Positive or negative inventory adjustment

When any active options of these two types are available, they are used in a stocktake (see the [4.17. Stocktakes](#) page) or when manually creating inventory adjustments (see [4.19. Inventory adjustments](#)).

### Stocktakes

In the main stocktake window, if the **Enter Quantity** value is adjusted to be different from the **Snapshot Quantity** value like this, for example:

Stock take sheet...

Description: 12/06/2020 Stocktake

Comment:

Stock take date: 12/06/2020

Stock take number: 21

Stock take entered date: 12/06/2020

Stock take status: sg

New line, Delete line(s), Print, Create Inventory adjustments, Order by

Search by item name and code

| Location | Item code | Item name                               | Batch     | Expiry     | Snapsh... | Pack Size | Enter Quantity | Adjustment reason | Comment |
|----------|-----------|---|-----------|------------|-----------|-----------|----------------|-------------------|---------|
|          | SS08044   | ARTEMETHER injection 20mg/ml 2ml Amp    | AAN146010 | 30/11/2018 | 40        | 6         | 50             |                   |         |
|          | SS08043   | ARTESUNATE + AMO...O pre-qualified FDCI | CYX086008 | 30/04/2018 | 800       | 75        | 800            |                   |         |
|          | SS08043   | ARTESUNATE + AMO...O pre-qualified FDCI | CYX296020 | 30/11/2018 | 25        | 75        | 25             |                   |         |
|          | SS08042   | ARTESUNATE + AMO...O pre-qualified FDCI | CYY307003 | 31/12/2018 | 25        | 75        | 25             |                   |         |

then the edit stocktake line edit window is automatically opened and you must select an option from the **Adjustment reason** drop down list:

Stock take line edit...

Item: ARTEMETHER injection 20mg/ml 2ml Amp

Total stock for this item: 240

Snapshot quantity: 40

Stock take qty: 50

Pack size: 6

Batch: AAN146010

Expiry date: 30/11/2018

Comment:

Donor: None

Adjustment reason: Please select a reason.

Location: None

Cost price: 1.00

Sell price: 1.00

Buttons: Cancel, OK, OK & Next

If you click on the OK button before selecting a reason you'll be prompted to choose one:

Alert...

Your stocktake quantity is different to your snapshot quantity. Please enter a reason.

OK

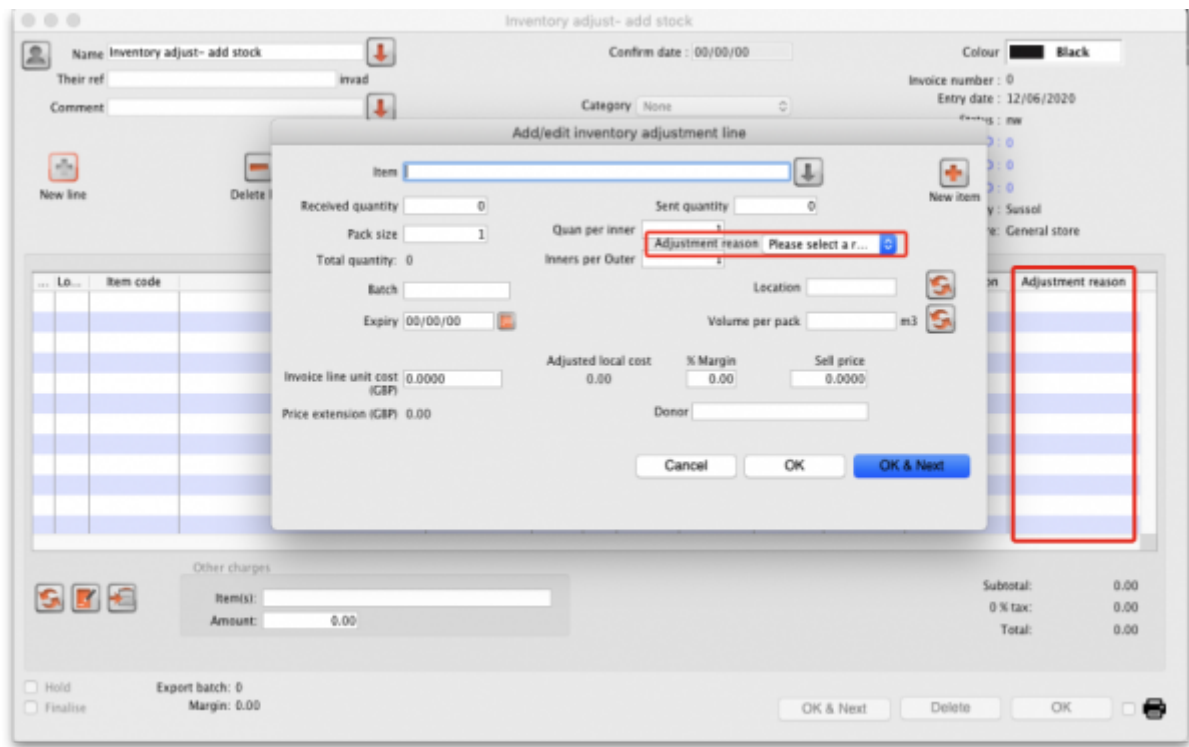
Of course, the same is true if you double-click on a line in the main stocktake window and edit the **Stock take qty** value to be different from the **Snapshot Quantity** in the stock take line edit window; you must select a reason from the **Adjustment reason** drop down list before you can proceed.

If the *Counted quantity* is greater than the **Snapshot quantity** the **Adjustment reason** drop down list is populated with *Positive inventory adjustment* options, if it is smaller then it will be populated with *Negative inventory adjustment* options.

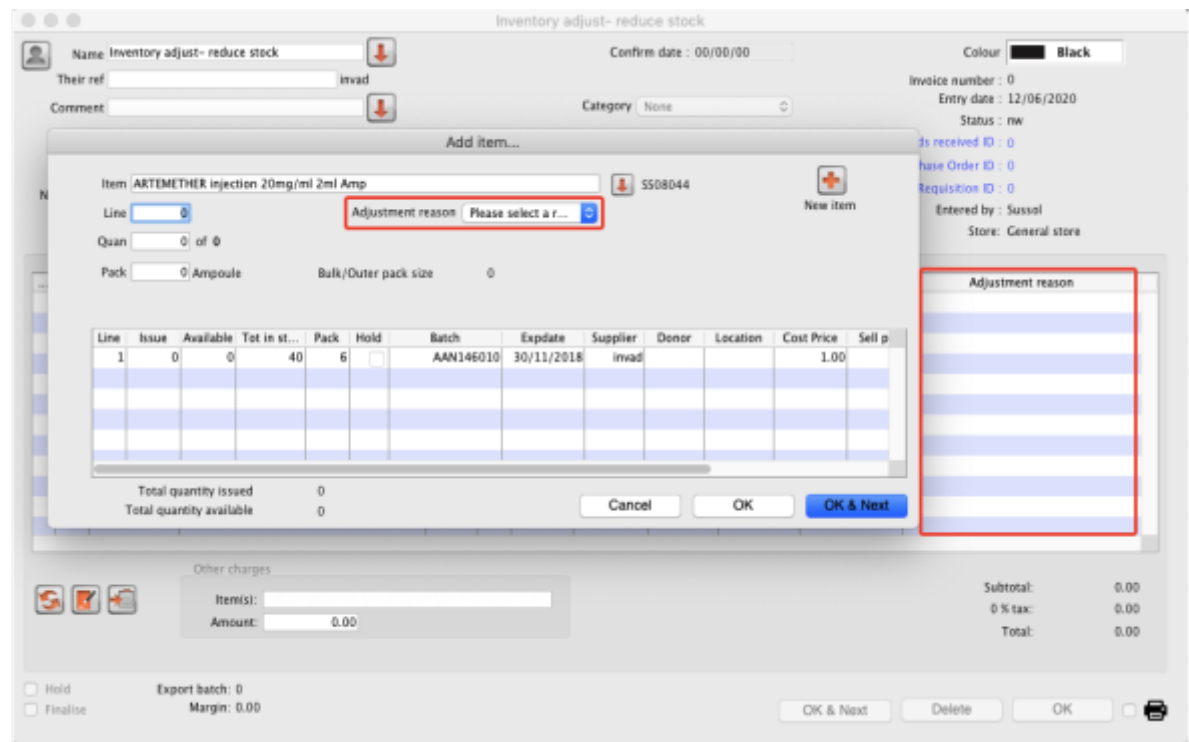
Any reasons entered on a stocktake are carried through to the corresponding inventory adjustment lines that are created when the stocktake is finalised.

Inventory adjustments

If there are any active *Positive inventory adjustment* type options, you must select one of them from the **Adjustment reason** drop down list when adding a line to an Inventory adjustment - add stock transaction:



If there are any active *Negative inventory adjustment* type options, you must select one of them from the **Adjustment reason** drop down list when adding a line to an Inventory adjustment - reduce stock transaction:



## New cash out transaction

When creating a new cash out transaction (see the [Cash Out](#) section for details), if there are any active *New cash out transaction* type options then you must select a reason from the **Option** dropdown list that is displayed in the window:

The screenshot shows a window titled "Add cash transaction". It contains the following fields and controls:

- Copy ID to Clipboard** button
- Invoice Number**: 1
- Entered by**: Admin
- Entry date**: 18/07/19
- Confirm date**: (empty)
- Name**: Alders Store (with a dropdown arrow)
- ALD**: (empty)
- Transaction type**: Cash out (with a dropdown arrow)
- Amount**: 10
- Option**: Refund (this field is highlighted with a red rectangle)
- Description**: (empty text area)
- New cash register balance: USD**: 0
- Cancel** and **OK** buttons at the bottom right.

## Payment type

When entering payments on a prescription (see the [11.03. Prescription payments and credits](#) page for details), if there are any active *Payment type* options then you must select one from the drop down list in the *Payment details* section on the *Payment* tab of the prescription before a payment can be saved:

**Prescription Entry**

**Patient details**

Name: Patient, Test Date of birth: 23/11/1974 ☐ Female  
 New Patient Code: Testp01 Address:   
 Store: AKPESSEKRO (CSR-D PUBLIC)  
 Entered: 04/06/2020  
 Invoice: 431  
 Entered by: Sussel

Prescriber:   
 Confirm date: 04/06/2020  
 Prescription date: 04/06/2020

**Items Payment**

**Other details**

This invoice will be automatically finalised if a payment is entered.

Cheque #   
 Note   
 To Pay

Invoice total 300.00  
 Total to pay 300

**Patient's credit status**

|                  |        |
|------------------|--------|
| Current balance  | 100.00 |
| Credit limit     | 100.00 |
| Available credit | 100.00 |

**Payment details**

Amount paid by credit 50.00  
 Amount paid by patient 250.00  
 Total payment 250  
 Amount given 0  
 Change to give back

Select the payment type

☐ Finalise Export batch: 0 Status: on ☐ Print receipt OK & Next Delete OK

Previous: **16.09. Barcode scanning preferences** | | Next: **16.11. Custom fields**

From:

<https://docs.msupply.org.nz/> - mSupply documentation wiki

Permanent link:

<https://docs.msupply.org.nz/preferences:options?rev=1591956432>

Last update: **2020/06/12 10:07**

