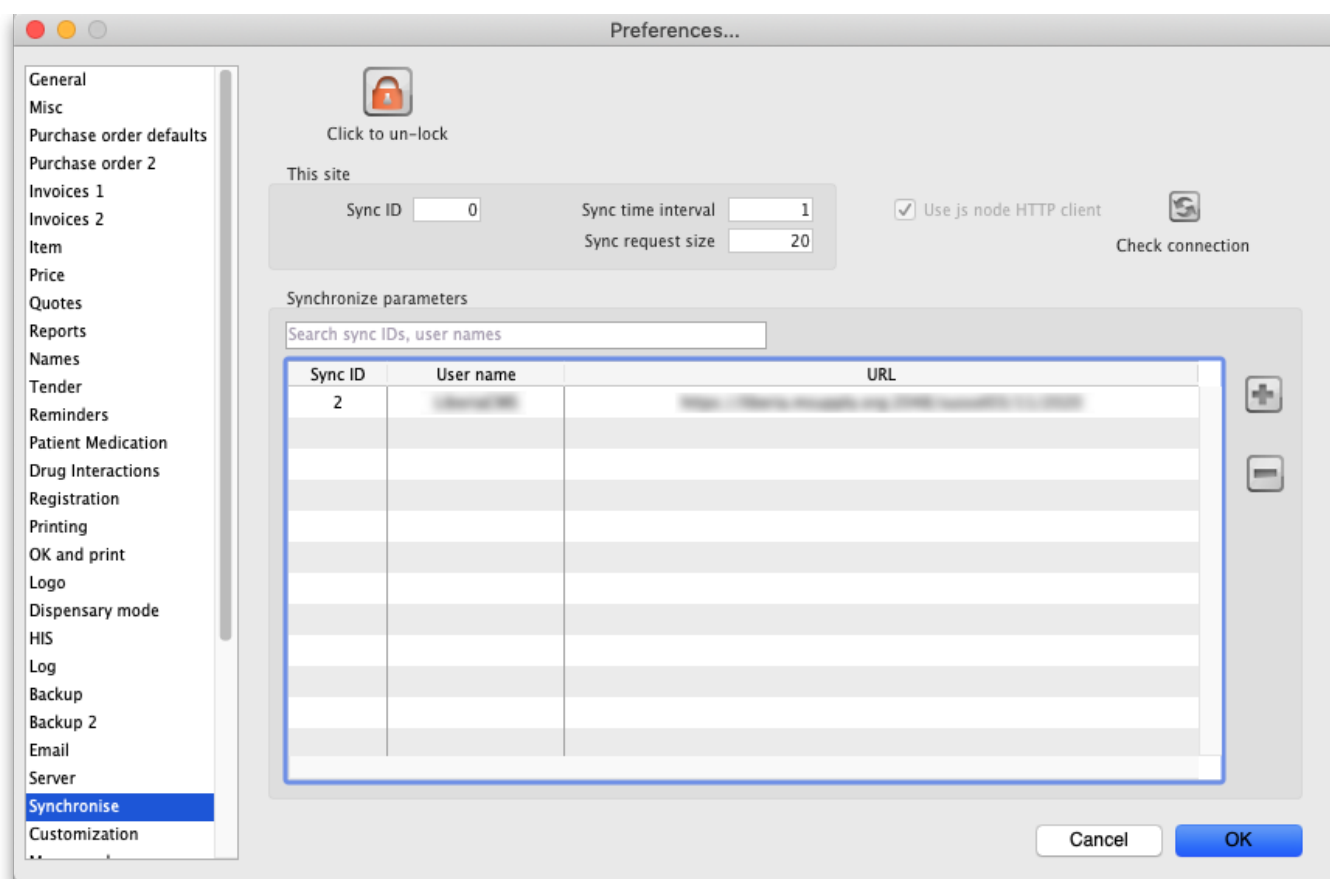


Synchronisation

*

Note that the main page describing synchronisation is [Remote Synchronisation](#)

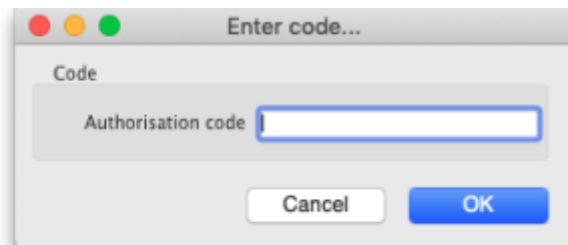
Synchronization is the process whereby mSupply® maintains data integrity between a master mSupply® server and 'satellite' or 'slave' mSupply® servers. It therefore only applies to situations where there is a multi-mSupply® server setup. In this process the master server will maintain a copy of all the data from the satellite servers as well as its own. It will also maintain a master list of names and items which are 'pushed' to the satellite servers (items and names can only be added, deleted or modified on the master server). So, using the master server to run reports will allow you to report on data from the master and all satellite servers. Each satellite server only contains data from its own location.



General

These settings will normally only be changed by Sustainable Solutions. They are not intended for general use by customers.

Click to Un-lock button: Altering these preferences can have serious consequences for your mSupply® data so they are protected by an authorisation code. Click on the 'Click to Un-lock' button and you are presented with the following screen:



To continue and edit the synchronize preferences enter your authorisation code in the box and click on the OK button. To return to the preferences screen without unlocking the synchronize preferences click on the Cancel button.

Sync time interval: This is the time interval in minutes between requests for new information that the satellite servers make to the master server.

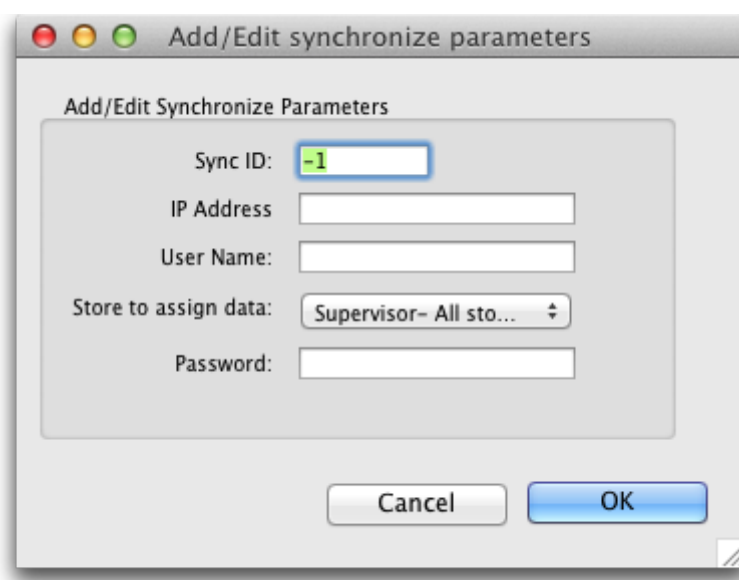
Synchronize parameters

Sync ID: The ID of the current store to use in the synchronization process. You choose this - a number between 1 and 64. This must be unique to each store to be synchronized. ID 1 is reserved for the master server (so, if this is the master server put 1 in here).

User name: Communication between the master and satellite servers is authenticated. This user name and the password field must match what the master server is expecting. So, you can enter any valid username and password in these fields but they must all be the same for the master and satellite servers.

Password: See above.

Sync with:



This list contains the names of the servers to synchronize with. If this is the master server all the satellite servers will be identified in this table. If this is a satellite server then the master server only will be identified in here. Click on the '+' button to add a server to the list (takes you to another window where you enter the Sync ID, Name, Store and URL for the server to synchronize. Note that these values, except URL will have been entered in this page on the servers hosting the stores

selected. Make sure you enter the right values! The URL field contains the full URL of the server hosting the store to synchronize) and the '-' button to delete a server you have selected in the list.

Back to: [General preferences](#)

From:

<https://docs.msupply.org.nz/> - mSupply documentation wiki

Permanent link:

<https://docs.msupply.org.nz/preferences:synchronisation?rev=1477619613>

Last update: **2016/10/28 01:53**

