

Updated: Version 4.02

6.04. Ordering from one store to another

If you run mSupply using [virtual stores](#) then you can place an order for goods with another store within mSupply.

There are two ways you can do this:

- Create purchase orders (internal requisitions) where the supplier is another store. In versions of mSupply prior to v4.01, these generated a single customer invoice in the supplying store, but in newer versions there is an extra intermediate step to generate a [response requisition](#) first. This allows you to create multiple customer invoices from the same order (e.g. when all of the requested order cannot be supplied at the same time):
 1. create purchase order to supplying store in requesting store
 2. when the purchase order is confirmed, a response requisition is automatically created in the supplying store
 3. in the supplying store, multiple customer invoices can be created from the response requisition
 4. when each customer invoice is finalised, a goods received record is automatically created in the requesting store
 5. when each goods received record is finalised, the received quantities for the purchase order are updated and a supplier invoice is automatically created
- In versions of mSupply newer than v4.01, internal orders are the desktop equivalent of [supplier requisitions](#) in mSupply mobile. If you aren't already using purchase orders and goods received records in your workflow, this is a simpler and easier way to place orders in another store:
 1. create internal order to supplying store in requesting store
 2. when the internal order is finalised, a response requisition is automatically created in the supplying store
 3. in the supplying store, multiple customer invoices can be created from the response requisition
 4. when each customer invoice is finalised, a supplier invoice is automatically created in the requesting store

Internal Requisitions

Using a Purchase Order to order from another store

For the most part, the process is the same as for [creating a normal purchase order](#). There are, however, a few significant differences:

- In the *Name* field of the purchase order, enter the name of the store which will supply your goods.



The names of suppliers which are stores will appear in *RED* in



the choice list of suppliers. If the name of the store you select as a supplier is **BLACK**, then you have not chosen another store as a supplier, and the instructions in the remainder of this section do not apply.

- The *Internal requisition* label will appear after the name to indicate that this is going to be an internal requisition.

Enter the purchase order lines as normal and when you're finished, confirm the purchase order (at this point you may be prompted to enter budget and/or category information, depending on your preferences):

Order num : 424 Name: Virtual store 2 VIR2 Internal requisition Black Status: on

Confirm date: 18/04/2011 Requested delivery: 18/04/2011 Store: General

General Details Ad Hoc items Goods Received Supplier Invoices Log Location

Update EDD Info Print Purchase Order Category: none

show all lines Currency: AUD Forex rate: 1

Line	Item code	Item	Orig Qty	Pack	Adj Qty	Tot. recei...	Stock on ...	On Order	Cust.b/ods	Price Ext	Requeste...	Store
1	EPV600	Etavirenz tablet 600mg	20	1	20	0	0	60	0	0.00	18/04/2011	General
2	Formraw	Formaldehyde solution 20% 5L	150	5	150	0	1799	0	0	0.00	18/04/2011	General

Supplier discount: Percentage: 0 Discount amount: 0.000 Estimated subtotal: 0.000 Estimated cost after discount: 0.000

☐ Locked ☐ Auto calc usage ☐ Finalize order ☐ Print long description ☐ Print my signature

OK & Next Delete OK

Once confirmed, it will no longer be possible to modify the purchase order lines, except for updating the expected data of delivery (EDD).

Processing the order (supplying store)

For versions of mSupply newer than v4.01, confirming the purchase order will create a [response requisition](#) in the supplying store (with your store's name in the *Name* field). This allows the supplying store to create multiple customer invoices to supply the order (and hence to better handle partially fulfilled orders). For older versions of mSupply, it will create only a single [customer invoice](#).

Once each customer invoice has been **finalised**, a goods received note for the purchase order will be created back in the store where you created the purchase order which started this whole process off (called the customer or receiving store).

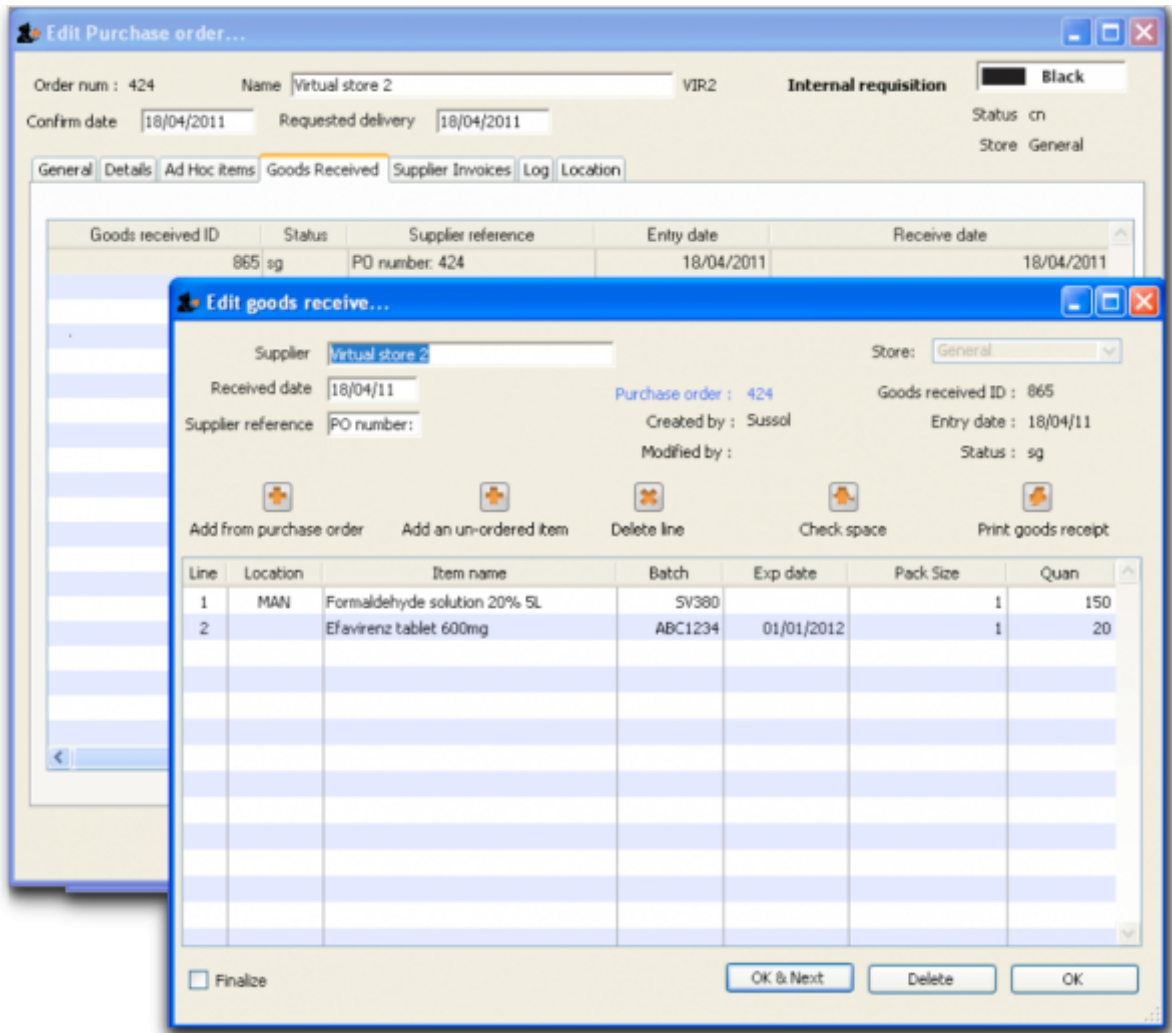
Handling partially fulfilled orders

If you have unfilled lines on the customer invoice (i.e. red placeholder lines), when you finalise the customer invoice you will be asked if you want to create a new invoice with the unfilled lines. This new invoice retains the link to the purchase order that created the original customer invoice, and can be used to issue further goods to the customer.

Note that you can also create another invoice that is linked to the original purchase order at any time by using the ["Duplicate" button](#) on the toolbar of the customer invoice list.

Receiving the goods (requesting store)

Now, back in your store, where you created the purchase order which started this whole process off, you can view the goods received record via the **Suppliers** tab on the Navigator or via the **File > Supplier > Show goods received** menu item (or via the **File > Supplier > Show purchase orders > Goods received** tab)



Notice that on the goods received note the lines from the customer invoice will have been filled in automatically. Process the goods received note in [the normal way](#) and note that, as with all other goods received, the goods are not added to your store's stock and available for issue until the goods received note has been finalised and the resulting supplier invoice confirmed. Note that, from mSupply v3.85, the original purchase order lines will only be updated with the stock received when the goods received note has been finalised.

Internal Orders (a.k.a. Request Requisitions)

Entering an internal order

To begin the process, choose *Supplier > Show internal orders*, and the list of any historic internal orders is displayed:

[illegible]

Either double-click on an existing order to edit it, or click the **New internal order** button to create a new one. The example below has a few lines already entered:

Edit internal order

Name: CMS Reference: ID: 13852
Order date: Comment: Status: sg
Max MOS: Type: request
Threshold MOS: Hide stock over threshold: ☐
Entry date: 18/10/18
Entered by: Admin
Store: OD Test Store

New line Add from master list Delete line(s) Filter items

Data entry Log

Li...	Item code	Item name	Unit	Our stock on hand	Average monthly consump...	Months of stock	Calculated quantity	User requested quantity	Comment
1	NC0071	Amoxycillin 250mg tabs	ea	43,962	17,651	2	8,993	9,000	
2	NC0082	Paracetamol 500mg tabs	ea	27,328	9,389	2	841	1,000	
3	NF0060	Doxycycline 100mg tab	ea	1,200	309	3	0	100	
4	NF0100	Bandage 15cm x 5m	ea	375	117	3	0	50	
5	ND0080	Rabies vaccine	ea	32	8	3	0	0	
6	NF0090	Vitamin A 100,000 I.U. caps	ea	14	0	28	0	0	
7	NC0010	ORS sachet (1 litre)	ea	5,740	1,124	5	0	500	

Save Sort order Finalise Cancel OK & Next OK

- The *Name* will default to the supplying store for the current store, but any other store in the data file can be selected in the usual way (i.e. enter the first key characters and hit the *Tab* key)

to find matches).

- If necessary, update the *Order date* - this will default to the current date.
- Use either the **New line** button to manually add a single item, or **Add from master list** to add any items in the current store's master list which are not there already.
 - mSupply already knows the current stock, and will calculate the *Average monthly consumption* and the *Months of stock*, based on the current stock on hand and assuming the same average monthly consumption. The *Calculated quantity* is then worked out by multiplying the average monthly consumption by the maximum months of stock, and then subtracting the current stock on hand. If adding a single item, the cursor will go into the *User requested quantity* cell. This will already been filled in with the *Calculated quantity* as the default value, but can be edited as required.
 - If adding from a master list, the cursor will instead go into the first new item's *User requested quantity* cell.
 - Either way, hitting the *Tab* key will move the cursor into the *Comment* cell and, if there's another line below, hitting *Tab* again will move the cursor into the next *User requested quantity* cell.
- If necessary, use the **Delete line(s)** button to remove selected item lines.
- The *Max MOS* field will default to the store's default days to supply (but converted to months). This can be edited, but doing so will recalculate the *Calculated quantity* and reset the *User requested quantity* to the new calculated quantity.

Edit internal order

Name: Central Medical Stores CMS Reference: yef Black ID: 13852

Order date: 18/10/18 Comment: regular order Status: sg

Max MOS: 4 Threshold MOS: 4 Hide stock over threshold: ☒ Type: request

New line Add from master list Delete line(s) Filter items Filter by item name or code Entry date: 18/10/18

Print Entered by: Admin Store: CID Test Store

Data entry Log

Li.	Item code	Item name	Unit	Our stock on hand	Average monthly consumption	Months of stock	Calculated quantity	User requested quantity	Comment
1	NC0071	Amoxycillin 250mg tabs	ea	43,962	17,651	2	26,645	26,645	
2	NC0082	Paracetamol 500mg tabs	ea	27,328	9,389	2	10,230	10,230	
3	NF0060	Doxycycline 100mg tab	ea	1,200	309	3	37	37	
4	NF0100	Bandage 15cm x 5m	ea	375	117	3	96	96	
5	ND0080	Rabies vaccine	ea	32	8	3	0	0	

Save Sort order

☐ Finalise Cancel OK & Next OK

If the order has a lot of item lines, you can filter them by typing into the *Filter items* field, which will change to display the number of visible items out of the total number in the order:

[illegible]

Note that, while a filter is active, some of the other buttons are disabled e.g. you can't save the sort order unless all lines are visible.

You can also filter item lines which have a lot of stock (and therefore don't need to be ordered) by entering a value in the *Threshold MOS* field. This will automatically tick the *Hide stock over threshold* checkbox, and hide any lines which have their *Months of stock* greater than or equal to *Threshold MOS*.

Last update: 2019/09/21 10:59 purchasing:ordering_from_one_store_to_another https://docs.msupply.org.nz/purchasing:ordering_from_one_store_to_another?rev=1569063572

[illegible]

Once you are satisfied, tick the *Finalise* checkbox. This will prevent further editing, and automatically delete any lines which have a requested quantity of zero.

[illegible]

When the order is then saved, it will automatically generate a corresponding [response requisition](#) in the supplying store. From there, one or more customer invoices can be raised in the supplying store which, when finalised, appear as supplier invoices back in the requesting store in the same way as regular [stock transfers](#).

Previous: [7.3. Purchase Order categories](#) | | Next: [7.5. Ordering from multiple stores](#)

From:

<https://docs.msapply.org.nz/> - mSupply documentation wiki

Permanent link:

https://docs.msapply.org.nz/purchasing:ordering_from_one_store_to_another?rev=1569063572

Last update: **2019/09/21 10:59**

