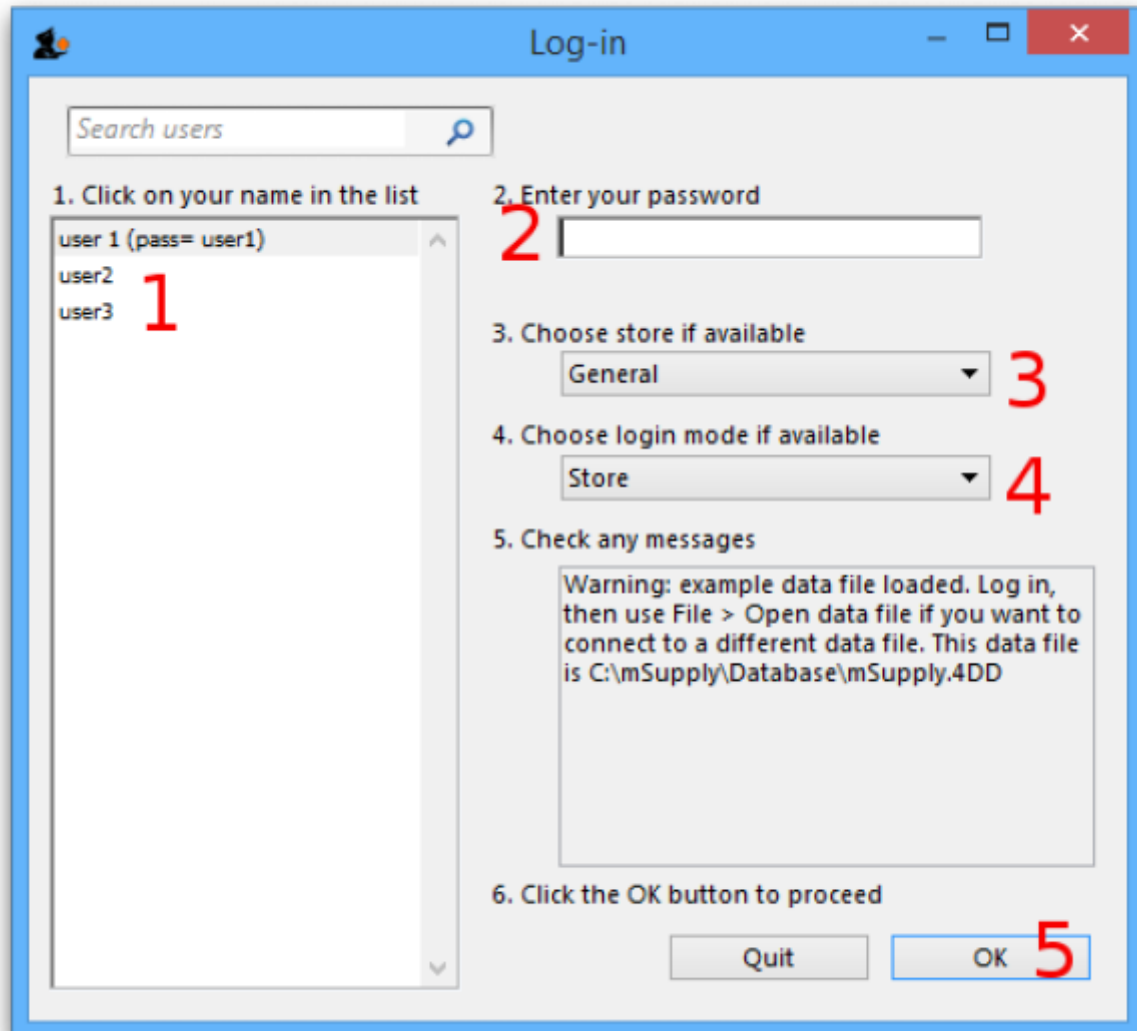


Logging in

When mSupply starts you will be presented with the log-in window:



This is the way the window appears when mSupply is started for the **first time**

1. You should select *user 1(pass=user1)* from the list
2. Enter the password "user1" (without the quotes). When different users with their own level of access have been set up, you will then log-in by selecting your user name and typing your own password.
3. From the drop down list, select the store with which you are working. Most mSupply users will be operating with a single store, but for users operating with more than one store, the login screen allows you to select any of the stores to which you have access. If you have been working with one store and want to change to another one see [foreign_keys](#). After selecting the desired store, all transactions will relate to that store until you return to the login screen and select a different store from the drop down menu.
 - Supervisors and other Level 1 users will have an additional menu item, *Supervisor - All*

stores . In this mode, all stores are accessible, and you would use this mode, for instance, when placing an order for supplies which will be distributed to a number of stores. Further information is available here: [Virtual stores](#).

- If you have enabled the Hospital Info System (HIS) in the user login permission settings (see [foreign_keys](#)), and at least one license is allocated to HIS (see [HIS preferences](#)), then you will also see *Hospital Info System* in the list of stores. If you select this, the login mode automatically changes to *HIS mode*.

4. Choose login mode, if the store is not *Hospital Info System*, you have the option to select *Store mode* or *Dispensary mode* ; the default can be set in your [Preferences](#)

5. Finally, click OK to login

Previous: [Introduction](#) Next: [Tutorial](#)

From:

<https://docs.msupply.org.nz/> - mSupply documentation wiki

Permanent link:

https://docs.msupply.org.nz/tutorial:log_in?rev=1500392895

Last update: **2017/07/18 15:48**

